



SALT LAKE

VISITOR'S GUIDE



Compiled by the Editors of
saltlake
MAGAZINE

meet

A 'MUST-SEE'
SHOPPING EXPERIENCE



OVER ONE HUNDRED STORES AND RESTAURANTS

Conveniently located downtown,
across the street from Temple Square.



west elm



AQUA TERRA
— steak — sushi —

TIFFANY & Co.

VUORI

NORDSTROM

free people

TUMI



KENDRA SCOTT



Special Offers for Out-of-Town Guests

Visit the City Creek Center Customer Service desk
(located on Level 1 outside of Macy's) for a free
Passport to Shopping savings brochure.

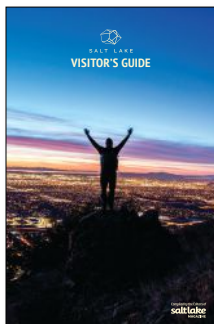
CITY CREEK CENTER

ShopCityCreekCenter.com • @CityCreekCenter

BEST OF THE WEST

CONTENTS

- 7 ORIENTATION**
Getting around town
- 15 NEIGHBORHOODS**
Get to know the neighborhoods that define Salt Lake County
- 35 MOUNTAINS**
Find adventure in Utah's mountain resorts in any season
- 64 THINGS TO DO**
The best, coolest and most fun things to do in Salt Lake
- 90 OUTWARD BOUND**
Salt Lake is your basecamp to the great outdoors
- 98 SHOPPING**
Boutiques, antiques and one-of-a-kinds
- 113 FOOD & DRINK**
From family-friendly to haute cuisine
- 126 DINING DISCOVERY**
Your guide to unique food and dining experiences



ON THE COVER

Image by Jon Burkholz

The *Official Salt Lake Visitors Guide* is a publication of Utah Partners Publishing, LTD., the publishers of *Salt Lake* magazine, *Utah Style & Design* and *Utah Bride & Groom*.
515 S. 700 East, Ste. 3i
Salt Lake City, UT 84102, 801-485-5100
saltlakemagazine.com
EDITOR Jeremy Pugh
ART DIRECTION Jeanine Miller
EDITORIAL & DESIGN
CONTRIBUTORS Christie Porter, Arianna Jimenez

For advertising information, call 801-580-9006 / For additional copies of this publication, call 801-534-4930.

© 2022 Utah Partners Publishing, LTD.
No whole or part of the contents may be reproduced in any manner without prior written permission of magazine, except individually copyrighted articles and photographs.



WELCOME TO SALT LAKE

Home to year-round outdoor adventure, Salt Lake welcomes you with stunning vistas, intriguing adventures, world-class culinary treasures and a vibrant cultural arts landscape. When you explore Salt Lake, you will find things that surprise and delight.

Salt Lake is an eclectic mix of diverse pastimes, inclusive cultures and varied landscapes—all coming together in our modern mountain hub of the west. From Broadway productions to local acting companies, from the ballet to outdoor concerts, there's something new to discover daily. Just ask one of our friendly locals who are always happy to share a hidden gem.

No matter the season, we have adventurous options for you. Take a short trip up one of our many canyons and into the towering Wasatch Mountains. Play in our world-famous "Greatest Snow on Earth"™ or go for a scenic hike, bike ride, picnic or rock-climbing outing. It's all close and easily accessible.

Explore our world-class dining options, vibrant arts and cultural offerings, shopping and lively nightspots plus a robust local music scene. And the new Salt Lake City International Airport is not only beautiful but makes your journey easy by offering regular daily non-stops to top cities. In addition, our light rail TRAX offers service downtown and beyond.

With the challenges of a pandemic behind us, it's exciting to be completely open and share with the world this beautiful and majestic place we call home. As mayor of Salt Lake County, I welcome you to our community. Whether you are here for leisure or business, I hope your stay with us is enjoyable and that you'll return again soon.

Jenny Wilson, Salt Lake County Mayor

VisitSaltLake.com saltlakemagazine.com

PHOTO CAPTION TK



Photo courtesy: HOK Architects

WHAT'S NEXT AT YOUR NEW



MORE ADDITIONS ARRIVING 2023-2024

Since the first flights departed The New Salt Lake International Airport, millions of travelers have experienced its stunning architecture, tech-friendly amenities, and thoughtfully curated dining and shopping options.

But we're just getting started.

As Phase 2 is finished in 2023, you can expect 22 additional gates and 19 new shops and restaurants, including more local favorites. And in 2024, Phase 3 will bring even more places to eat, drink, shop, and relax—plus a new central tunnel that significantly shortens the walk to Concourse B gates.

See what's next for your new SLC at slcairport.com



22 ADDITIONAL GATES



19 NEW SHOPS AND RESTAURANTS



CENTRAL TUNNEL TO CONCOURSE B



MORE FLIGHTS TO MORE DESTINATIONS

**NOW OPEN:
NEW GATES ON
CONCOURSE A-EAST**





MINDS OPEN

MICHAEL KUNDE

(LEFT TO RIGHT) MICHAEL
KUNDE, AUSTEN DIAMOND
PHOTOGRAPHY, VISIT
SALT LAKE



IN WIDE OPEN SPACES

Salt Lake is more than people think. It's a place where diverse pastimes, cultures, and landscapes come together in the mountain hub of the West. Modern and genuine; it's an inclusive culture where kind, open-hearted people embrace differences and encourage new perspectives. It's genuine, eclectic, bold, creative and inspiring.



GALLIVAN
CENTER

Tuesday Big Band Dance Nights
Free Dance Lessons!
www.thegallivancenter.com

JUST WEST OF CONVENTIONAL, DISCOVER S A L T L A K E

Welcome to a place where elevation meets aspiration.
A modern city with every urban amenity set minutes away
from spectacular mountains. A place for open minds and fresh
perspectives. Experience our unique blend of traditional and
progressive. Our mind-blowing winter adventures both on the slopes
and off. World-class arts and every kind of outdoor adventure.
Incredible day trips and nightlife. When you're ready to find the kind
of place that feels anything but ordinary, come plan your trip with us.
In Salt Lake you'll find yourself right where you belong.



UNLOCK SALT LAKE WITH VISIT SALT LAKE'S DISCOUNT PASSES

| | | | |
|-------------------------|----|--------------------------------|-----|
| VISITSALTLAKE.COM | 13 | CONNECT ATTRACTIONS PASS | 64 |
| SKI SUPER PASS | 36 | BREWERY PASS | 120 |

Salt Lake City is more than just the urban center—it's the area stretching along the I-15 Corridor following the stunning Wasatch Range to the east and the shimmering blue waters of the Great Salt Lake to the west.

STATE OF DESERET

Salt Lake City was founded in 1847 by The Church of Jesus Christ of Latter-day Saints. Upon arriving in the foothills above Salt Lake, the Church's leader Brigham Young declared "This is the place." Within four days, he had chosen the site for the Church's Salt Lake Temple and designed the city's grid layout, centered on the Temple. The pioneers called their new state "Deseret" and the population swelled with an influx of religious converts, making it one of the most populous cities in the American West. Meanwhile, the U.S. was engaged in the Mexican-American War which concluded with the Treaty of Guadalupe Hidalgo in 1848. The treaty ceded territory (including the area that would become the state of Utah) to the U.S. In 1849, Congress established the Utah Territory.

THE UTAH WAR

Polygamy made relations between the Utah Territory

and the U.S. government tense for much of the mid to late 1800s, peaking in the late 1850s with the Utah war—a series of small skirmishes between Latter-day Saint militias and Federal troops. Under the guise of protecting the Overland Mail route, President Abraham Lincoln stationed 3,000 soldiers in Salt Lake City, where they established Camp Douglas above what is now the University of Utah campus.

THE SILVER BARONS

Because the soldiers had little to do, their commander Col. Patrick Connor directed the troops to prospect

for minerals in the valley and in the hills. Brigham Young had prohibited his followers from mining and prospecting, not wanting to subject his community to the boom and bust cycle of an economy built on mining. As a result, Connor's men uncovered rich veins of silver, copper and other precious metals that would lead, along with the coming of the Transcontinental Railroad, to the rise of the Silver Barons in Utah.

The Railroad and Silver Barons would begin to change Salt Lake. Railroad workers of many races and nationalities established enclaves in Salt Lake City, where today bastions of



PHOTOS COURTESY OF VISIT SALT LAKE



these immigrant communities—Greek Town, China Town, Japan Town—still exist. The Barons, mostly from back East, spent lavishly on mansions that today line Salt Lake City's South Temple Street. (The Utah State Governor's Mansion was built by silver magnate Thomas Kearns). It was during this boom time that in 1890, the Church of Jesus Christ of Latter-day Saints issued "The Manifesto," which ordered its members to obey the federal government's marriage laws. Thus, Utah was able to achieve statehood six years later.

THE BEEHIVE STATE

The old mining claims would become privately-



owned ski resorts, providing the jet set with a reason to skip Colorado. In 2002, the Winter Olympics thrust Utah into the spotlight, with Salt Lake City at the center of it all. A clean, walkable bike-able metropolis with a progressive city government, Salt Lake attracts talented and creative people from around the world.

The food scene has exploded along with a healthy nightlife. Art, music and creativity are thriving in what was once considered a sleepy backwater.

The surrounding communities and neighborhoods have also flourished, creating a vast metroplex of unique neighborhoods and districts. All draw upon the valley's place below the Wasatch Front Range and celebrate a tradition of good clean living, where open minds and generous spirits intersect. As you will see in the next pages, Salt

Lake is now a place where diverse pastimes, cultures and landscapes come together in the modern mountain hub of the West.

**NOW
PLAYING
UTAH**

Need an arts and entertainment fix?

With an ever-changing mix of live music, sporting events, festivals, stage plays and art exhibits, Salt Lake has a perpetually changing calendar of things to do and see. Relax. Finding and getting to these events is easy because dependable info is no farther away than your laptop or smart phone. Now Playing Utah has up-to-the-minute information and links for it all. nowplayingutah.com



INFO ON THE GO

Whether you’re socializing with the folks at the Salt Lake Visitors Center or getting to know the lay of the land via Facebook and Twitter, there are plenty of options to get info on the Beehive State.

AT YOUR SERVICE

Salt Lake Visitors Center

We’ll assist you in building the perfect vacation in Salt Lake City and beyond. Free maps, brochures and guidance will help you craft your itinerary, whether you’re interested in tours, outdoor activities, concert and attraction tickets or regional travel. Free WiFi and device-charging stations are available, and the friendly staff is at your service. 90 S. W. Temple, 801-534-4900

Utah Office of Tourism

Check out the Utah Office of Tourism for even more information on exploring state parks, monuments and our Mighty Five™ national parks. 300 N. State St., 800-200-1160

GETTING AROUND

Salt Lake City International Airport

The Airport, only 10 minutes from downtown Salt Lake City, has been entirely rebuilt and refurbished to welcome the next generation of travelers. This new airport has made travel easier for fliers, is more

sustainable and can handle larger groups of travelers more efficiently with fewer delays. For more info, visit slcairport.com.

Public Transportation

Utah Transit Authority (UTA) provides bus, TRAX and FrontRunner connections throughout the valley and to the airport. UTA offers a free fare zone in downtown Salt Lake City. rideuta.com

GENERAL INFORMATION

Population

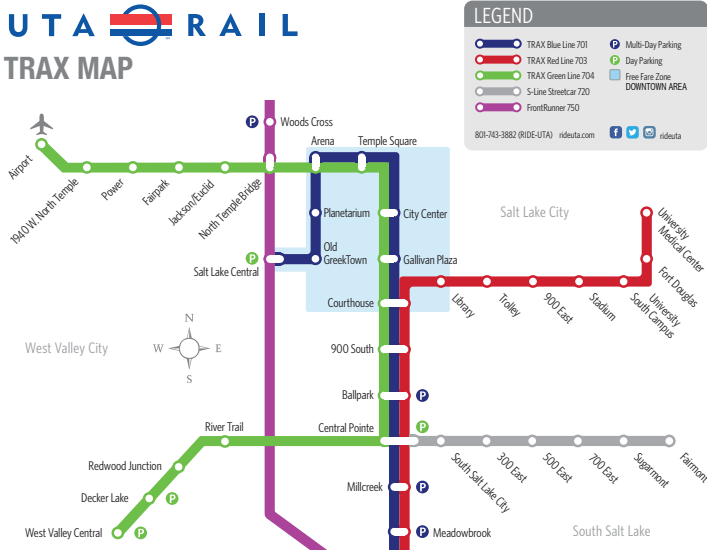
| | |
|----------------------|--------------|
| Salt Lake City | 200,591 |
| Salt Lake Area | 1.19 million |
| Wasatch Front | 2.6 million |
| State of Utah | 3.4 million |

Elevation

| | |
|---------------------------|----------------|
| Salt Lake City | 4,330 ft |
| (Nearby Mountains) | (1,320 meters) |
| Snowbird Base | 8,100 ft |
| | (2,469 meters) |
| Snowbird Hidden Peak..... | 11,000 ft |
| | (3,353 meters) |

GETTING AROUND

You don't need your GPS in SLC. The city is built on a grid, and public transit abounds. You'll soon learn that Salt Lake is a web of interconnected neighborhoods.



WHAT'S UP WITH THE...

Orange Flags? Grab a flag when you cross busy streets and wave it proudly to alert motorists. The crosswalk flag program has resulted in a 30 percent decrease in pedestrian accidents.

Chirping Signs? Our downtown crosswalks chirp with two different signals indicating when it's safe to cross.

Green Bikes? A great way to tour SLC's downtown is on a snazzy bike (with bike basket). When you're done, just return it to one of 47 stations located throughout Salt Lake. A GREEN-bike day pass is \$7, providing pass holders with an unlimited number of 30-minute rides in a day. Worried about navigating hills? GREENbike offers ebikes too!

Dockless Scooters?

Pick up a scooter where you find it, or download one of many scooter apps to locate one. Unlock with an app (apps vary with scooter company), pay via credit card per minute of ride, and leave it anywhere you'd like. No docks required.

Blue Parking Robots? Just key in the number in front of your car, swipe your credit card, hit a couple buttons and be on your way. It's even easier using the free ParkSLC app on your smart phone. The machines also accept coins if you're committed to the quarter-and-dime route, but do not accept paper money. (parkingslc.com)

Electric Car Charging Stations?

Salt Lake has many locations to charge up. (chargepoint.com, semaconnect.com, evgo.com)

HISTORY OF SALT

Salt, one of the most common elements on our planet, is essential for all life. It has played a starring role in world history, our health and our religious and cultural traditions.

It is interwoven into our sense of place here in Salt Lake. It's the star of our city in many ways, from the name of our vibrant capital city to the famous Great Salt Lake, not to mention the Bonneville Salt Flats, globally noted for numerous land speed records.

As far back as 6050 B.C., salt has been an integral part of the history of the world and a fundamental element in the rise and fall of countless civilizations. Egyptian art records salt use as early as 1400 B.C.

Throughout history, salt has been highly valued and

even used as currency. In fact, the term "salary" was derived from the word "salt." Salt gave rise to great cities around the world. Countless treaties and wartime strategies revolved around the making or denying of salt, and it was closely tied to the rise of power and dominance by rulers.

Salt is also the subject of generations of lore, tales and idioms. Terms like 'not worth his salt' and 'salt of the earth' abound. In many civilizations, salt has been extensively used for the improvement of luck, well-being, cleansing, purifying and clearing negativity. We offer you our "gift of salt" via an array of diverse pastimes, intriguing experiences and our inclusive culture—as a welcome to our unconventional city.



Antelope Island
State Park

SEAN BUCKLEY (LEFT), JON BURKHOLZ (RIGHT)

THE SALT LAKE SCENE

Visit Salt Lake's blog (visitsaltlake.com/blog) is the source for everything you need to know about the city and beyond. Find an insiders guide to food, fun, shopping, Salt Lake secrets and more.



OUTDOORS

- City Parks
- County Parks
- Local Festivals
- Year-round Hiking



THINGS TO DO

- Cycle in Salt Lake
- Tour Public Murals
- Go to an Art Gallery
- Visit the Great Salt Lake

RESTAURANTS AND BARS

- Beer in the Beehive
- Food Trucks
- SLC's Best Burgers
- SLC's Coffee Scene

YOU ARE HERE

Reach into your pocket to find Salt Lake right on your smartphone. Use your phone or tablet to easily access the informational content at visitsaltlake.com.

SO MUCH TO FIND ON VISITSALTLAKE.COM

What's Nearby: Locate food, nightlife and more using your phone's GPS function.

Things to Do: Enjoy art, attractions, shopping, sports and recreation.

Restaurants and Bars: Find them by cuisine type and location.

The Best Places to Stay: From full-service hotels and vacation homes to condos and B & B's, we have lodging to suit every taste and every budget.

Top Events: Discover what's going on during your stay in Salt Lake.

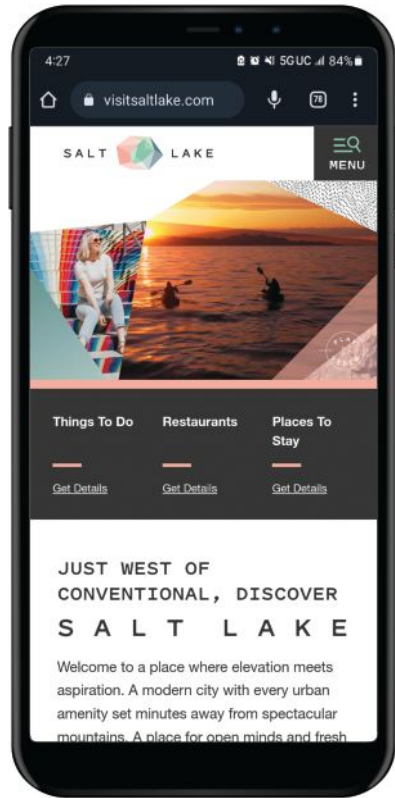
Deals and Discounts: Find deals on the site for top area attractions, restaurants and hotels.

A Connect Pass or Brewery Pass: Explore more with passes valid at many attractions.

Salt Lake Ski Super Pass: Your discounted lift ticket to Salt Lake's four world-class resorts.

The Salt Lake Scene blog: Be in-the-know on all things Salt Lake with our local experts.

Ideal for both visitors and locals,
[VISITSALTLAKE.COM](https://visitsaltlake.com)
is the source for people on the go.



VisitSaltLake.com

is the gateway to your Salt Lake experience in the palm of your hand.

BOOK AND SAVE

Ready to head West of Conventional? See for yourself why Salt Lake is anything but expected. Use Visit Salt Lake's planning and hotel booking tools at visitsaltlake.com. Discover deals and packages that will help you find wonderful places to stay and experiences, activity passes and more.



VISIT STANLEY, IDAHO

YEAR-ROUND DESTINATION
WWW.STANLEYCC.ORG

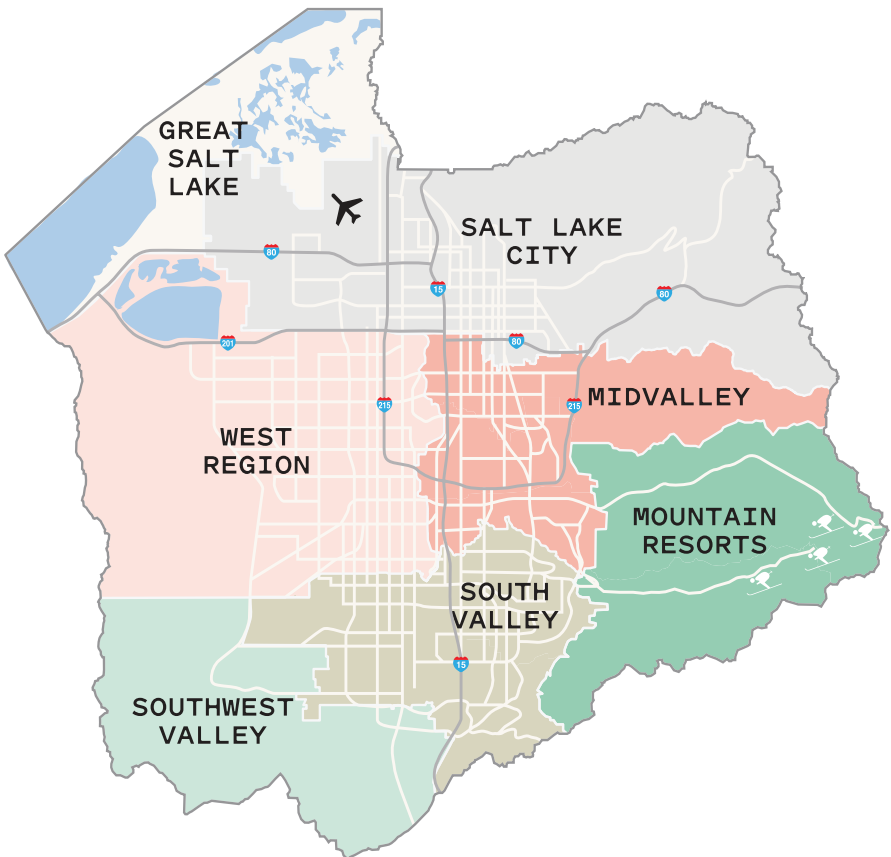
STANLEY
TRAILHEAD TO IDAHO ADVENTURE

IDAHO
visitidaho.org



WELCOME TO THE NEIGHBORHOOD

The Great Salt Lake Valley is served by two main Interstates: I-15, which runs north-south, and I-80, which runs east to Park City and west to the Airport. The I-215 Belt Route connects to the mountain resorts above Salt Lake. All three have access to light rail (TRAX), the FrontRunner train and UTA bus systems.





DOWNTOWN

Downtown Salt Lake City remains a center of entertainment, with many upscale and unique restaurants, a spectrum of bars and clubs, symphony, opera, NBA games and more. Downtown has embraced the urban living movement, providing light-rail transportation, lofts, shopping—both high-end and offbeat—and hotels that range from swanky to cozy. Hop aboard TRAX trains for a ride into Downtown. The young, hip residents make the heart of SLC an exciting place to stay.

EAT AND DRINK

You're surrounded by cutting-edge restaurants and watering holes. It's best to just surrender to eateries

like **Current Fish & Oyster** (currentfishandoyster.com), a cool, retrofitted industrial space with inventive takes on seafood and a great neighboring bar, **Under Current** (undercurrentbar.com). Located in the historic Eagles Building, **Caffé Molise** (caffemolise.com) offers

Italian cuisine inspired by the Molise region of Italy. At **The Gateway** (thegateway.com) there's **Flanker** (flanker-slc.com), casual dining that's a little bit sports bar, with a bowling alley, karaoke and golf simulator. **The Hyatt Regency Salt Lake City** (hyatt.com/en-US/hotel/)



AUSTEN DIAMOND PHOTOGRAPHY (BOTTOM LEFT & RIGHT)



utah), connected to the Salt Palace Convention Center, is home to **Mar | Muntanya**, serving a twist on Spanish cuisine, and **Contribution Cocktail Lounge**. Another dining hotspot, Edison Street, hosts **Franklin Ave. Cocktails and Kitchen** (franklinaveslc.com) and cocktail lounge, **Back Door** (backdoorslc.com).

PLAY

Most nights, anywhere in Downtown is walking distance to a symphony, Broadway show, the opera or a world-class dance performance. **Abravanel Hall**, **Eccles Theater**, **Janet Quinney Lawson Capitol Theatre** and **Rose Wagner Performing Arts Center** (saltlakecountyarts.org) are notable venues for music, theater and dance. Just off the square, genealogy buffs will be drawn to the Family History Library and, for beginners, the Discover Experiences at the **Family History Library** (

arch.org). **Gallivan Center** (thegallivancenter.com), "Salt Lake's Living Room," hosts festivals and events every season. At the south end of Downtown, the **City Library** (slcpl.org) is the secular center of town, a landmark building and festival space.

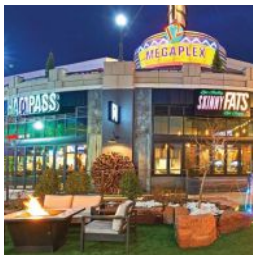
SHOP

Puttin' on the glitz? Head uptown to **City Creek Center** (shopcitycreekcenter.com) where you'll find Nordstrom, Tiffany & Co. and Anthropologie. Feeling funky? East Broadway (300 South) is lined

with vintage and antique shops, including **Jitterbug Antiques & Toys** (801-537-7038), and **The Green Ant** (mid-century modern) (thegreenant.com). Bibliophiles can pursue their bliss at **Ken Sanders Rare Books** (kensanders.com).

WHAT THE LOCALS KNOW

Utah Museum of Contemporary Art (utahmoca.org), by the Salt Palace Convention Center, offers mind-blowing modern art exhibits absolutely free.



HALL PASS

Take your pick from a variety of cuisines under one roof at HALL PASS.

153 Rio Grande, The Gateway,
801-415-9886 hallpassslc.com





Liberty Park

CENTRAL CITY

Not too downtown, not too suburban, Central City is just right. Home to historical landmarks, haute couture, hip enclaves and culinary arts, this 'hood is actually near perfect.

EAT AND DRINK

Work your way from South Temple to Liberty Park, and nosh on great bites along the way. **VENETO** (venetoslc.com) dishes out big helpings of Italian delicacies. **Cafe Niche** (caffeniche.com) offers

casual lunches and dinners with a chef's touch. Neighborhood bar **Dick N' Dixie's** (801-994-6919) is where Real Salt Lake fans congregate.

The Bagel Project (bagel-project.com) makes authentic NYC bagels, while **Desert Edge Brewery** (desertedge-brewery.com) in Trolley Square serves great pub fare and house brews. Stop in for a java at the **Coffee Garden** (coffeegardenslc.com). A favorite lunch spot is the **East Liberty Tap House** (eastlibertytaphouse.com) where select brews meet bar food with a gourmet twist.

PLAY

At 80 acres, **Liberty Park** (at 600 E. and 900 S.) is packed with playground equipment, tennis courts, kickball fields, drum circles and a pairs-friendly running trail. For nighttime fun, hit **Urban Lounge** (theurbanloungeslc.com), which hosts rising bands nearly every night. Or join the cerebral crowd for an art-house flick at **Tower Theatre** (saltlakefilmsociety.org).

SHOP

Trolley Square (trolleysquare.com) is both a mall and a destination. In a past life, it was the hub for the city's trolley cars. Notable shops include high-end stationer **Tabula Rasa** (tabularasastationers.com) and kitschy gift shop **Cabin Fever** (trolleysquare.com/cabinfever). The 9th & 9th area is also a strollable gem for shopping, with boutiques like **Salt and Honey Market** (saltandhoneymarket.com), **Hip & Humble** (hipandhumble.com), **The Children's Hour** (childrenshourbookstore.com), **Koo De Ker** (koodeker.com) and **The Land of Salt** (thelandofsalt.com).

WHAT THE LOCALS KNOW

One of the area's oddest attractions, **Gilgal Sculpture Garden** (gilgalgarden.org) is home to 12 quirky sculptures—notably, the Sphinx statue bearing the face of the Church of Jesus Christ of Latter-day Saints' founder Joseph Smith.



TRACY AVIARY

Have a hands-on avian experience with raptors at Tracy's bird show.

589 E. 1300 South,
801-596-8500, tracyaviary.org



Wasatch Brew Pub

SUGAR HOUSE

Sugar House is a center for eclectic shops, small galleries, craft restaurants and bars. With diverse, progressive residents—like students from **Westminster College** (westminstercollege.edu)—this neighborhood is walkable and friendly. The heart of the neighborhood is the vibrant hub around 2100 South and Highland Drive, and the Sugar House Streetcar, also known as the **S-Line**, (rideuta.com) makes it all easily accessible.



KIMI'S CHOP & OYSTER HOUSE

Enjoy surf and turf on Kimi's divine patio or dining room.

2155 Highland Dr., 801-946-2079,
kimishouse.com

EAT AND DRINK

Salt Lakers come to Sugar House for pub fare of the highest order. **Wasatch Brew Pub Sugar House** (wasatchbeers.com) serves award-winning craft brews alongside menus that feature dishes like mac & cheese and killer burgers.

The DoDo (thedodorestaurant.com) has been a favorite brunch spot for decades.

For a hearty plating of comfort food, visit long-time staple **Sugar House BBQ** (sugarhousebbq.com), and if you're wanting to watch the game while you nosh, try **Fiddler's Elbow** (fiddlerselbowsllc.com). For breakfast and lunch with a Scandinavian touch (think trout and eggs instead of steak and eggs), try **Finn's Cafe** (finnscafe.net) and if you're looking for a drink,

try the creative libations at **ACME Bar Company** (acme-barcompany.com) or **Quarters Arcade Bar Sugar House** (quartersslc.com/sugarhouse).

SHOP

Make sure to check out many cool, local shops. Locally owned **Spoons 'n Spice Kitchenware** is a cook's dream (spoonsnspice.com), while **Pib's Exchange** (pibsexchange.com) wins with funky consignment. **Sundance Catalog The Outlet Store** (sundancecatalog.com) offers amazing discounts on western-inspired clothing and home goods. Or, walk down to **Raunch Records** (801-467-6077) to restock your music supply. **Local Colors of Utah Art Gallery** (localcolorsart.com) features Utah artists' work.

PLAY

Get together with your people at **Sugar House Park** (sugarhousepark.org)—110 acres in the middle of the neighborhood. The hilly landscape is perfect for sledding in winter and summertime runs, walks or bike rides. Or, hit the links at **Forest Dale** (slc-golf.com)—Utah's oldest golf course.



State Capitol

AVENUES/ CAPITOL HILL

On the hill rising from the Downtown and Central City districts, this neighborhood is a world unto itself. Historic bed and breakfasts, artisan coffee, craft beer, charming local restaurants and cathedrals give this charming neighborhood its unique character.

EAT AND DRINK

Neighborhood pub **Mountain West Cider** ([mountainwest-](http://mountainwestcider.com)



SAFFRON VALLEY COLONIAL

Saffron Valley offers creative spins on Indian food.

26 E St., 801-203-3325,
saffronvalley.com

cider.com) has a tasting room and Beer Garten. Near the State Capitol, **Arlo Restaurant** (arlorestaurant.com) chef-owner Milo Carrier serves classic favorites with a farm-to-table ethos. **Publik's** (publikcoffee.com) Avenues location offers a java fix. If you want a sweet treat, **Hatch Family Chocolates** (hatchfamilychocolates.com) is famous for amazing hand-dipped chocolates and confections. For nightlife, there are two prominent options: **The Garage on Beck** (garageonbeck.com) with its roadhouse menu of comfort food and live music, and **Handle Bar** (handlebarslc.com), designed with cyclists in mind.

PLAY

Make it a "must do" to see one of the fine, often-original, plays staged by **Salt Lake Acting Company** (saltlakeactingcompany.org). **City Creek Canyon**,

above Memory Grove, is fun to explore on foot or bicycle and nature watch. For self-care, **The Kura Door**, a holistic Japanese spa (thekuradoor.com) will melt away all your stresses.

SEE

A walk in this neighborhood is an architect's delight, including the **Utah State Capitol Building** (utahstatecapitol.utah.gov), **Salt Lake Masonic Temple** (wasatchlodges.org) and **The Cathedral of the Madeleine** (utcotm.org), along with some of the state's historic mansions.

WHAT THE LOCALS KNOW

In the Avenues, you'll find a great view and Salt Lake's oldest grave in the **Salt Lake City Cemetery** (saltlakecitycemetery.org): Mary B. Wallace, a toddler who was buried on Sept. 27, 1847.

PHOTOS COURTESY OF VISIT SALT LAKE



Red Butte Garden

UNIVERSITY/ FOOTHILL

A beautiful neighborhood crowned by large trees and historic homes, the area around the University of Utah (Go UTES!) and Foothill Drive provides dazzling nighttime views of the city, gardens and quick access to the Wasatch Mountains.

EAT AND DRINK

More than 33,000 students make the University area

one of the city's most vibrant neighborhoods, and there's no shortage of solid eats here. For the college experience, go underground to U staple **The Pie Pizzeria** (thepie.com). Iconic brunch spot **Ruth's Diner** (ruthsdiner.com) offers a good excuse for a drive as it sits about a mile up Emigration Canyon.

PLAY

On gamedays, **Rice-Eccles Stadium** (stadium.utah.edu) becomes a sea of red as Utah Utes fans cheer on their favorite Pac-12 team. Not far away are more than 100 miles of maintained mountain ways on the **Bonneville Shoreline Trail** (bonnevilleshorelinetrail.org), a mixed-use trail for bikers, runners and dog walkers. One of the coolest hikes is to **The Living Room** ([trailhead at 383 Colorow Dr.](http://trailhead.at.383.Colorow.Dr)), which gets its name from the hand-fashioned boulder couches and rock "chairs" perfect for enjoying sunsets and the city view.

SEE

Visit the **University of Utah** (utah.edu), home of the Utes, the state's flagship institution. Walk through **Red Butte Garden and Arboretum** (redbuttégarden.org) with its displays of native plants and flowers in a unique desert ecosystem. Then, catch some culture by taking in a play at **Pioneer Theatre** (pioneertheatre.org) or a musical performance at **Kingsbury Hall** (kingsburyhall.utah.edu). Family fun can be found at **Hogle Zoo** (hoglezoo.org) and **This is the Place Heritage Park** (thisistheplace.org), which brings pioneer and American-Indian history to life. **The Fort Douglas Military Museum** is an interesting look at Utah's role in the Civil War.

WHAT THE LOCALS KNOW

Every year, animals at Hogle Zoo, like Vulcan the lion, predict Super Bowl winners.



NATURAL HISTORY MUSEUM OF UTAH

A kid and adult favorite, this architectural marvel is filled with dinosaur bones and other scientific wonders.

301 Wakara Way,
801-581-6927, nhmu.utah.edu



Publik Coffee Roasters

GRANARY DISTRICT/ BALLPARK

The Granary District/Ballpark Area is part industrial, part commerce and part artists' neighborhood. The home of the **Bees** (mlb.com/salt-lake), a Triple-A baseball team, can be found here, along with many of the city's hidden urban gems.

EAT AND DRINK

Enjoy some smoky, meaty goodness at the barbecue joint **R&R BBQ** (randrbbq.com) or take on the enormous,



KILBY COURT

See all-ages, soon-to-be-famous bands in a very funky but safe venue.

S. 741 Kilby Ct., 801-364-3538,
kilbycourt.com

world-famous burger at **Lucky 13** (lucky13slc.com), which also boasts a killer Bloody Mary. **Epic Brewing** (epicbrewing.com) sells a large selection of craft beers you can drink or carry out and **Mamachari Kombucha Taproom** (mamachari.cc) sells its fermented, healthy beverage from its brewhouse. There's a number of watering holes and eateries in the area. Start your day at **Publik Coffee** (publikcoffee.com). Grab a hot slice, a cold drink and a good time at **Slackwater Pizza** (slackwaterpizzeria.com). **Vertical Diner** (verticaldiner.com) has a 100% plant-based meal. **Fisher Brewing Company's** taproom (fisherbeer.com), opened in 2017 in a renovated body and paint shop. **Piper Down** (piperdownpub.com) is a proper Irish pub. The up-and-coming Central 9th area is home to innovative cocktails at **Water Witch** (waterwitchbar.com) and **Laziz Kitchen's** (lazizkitchen.com) creative Lebanese fare.

PLAY

Take yourself out to the ballgame, watching the minor-league Bees. Drop in at **The Front Climbing Gym** (frontslc.com) to boulder and generally hook up. When the sun goes down, check out **Club Try-Angles** (clubtryangles.com), a buzzy LGBTQ+ bar and club. More than a hotel, **EVO** (evohotel.com) is part skatepark and climbing gym.

SEE

The State Room (thestateroompresents.com) is considered by many locals to be Salt Lake City's best live-music venue.

WHAT THE LOCALS KNOW

One of Salt Lake City's oldest districts, The Granary was once the heart of manufacturing, processing and storage of goods, primarily centered around the grain silos that gave this district its name.

(TOP) AUSTIN DIAMOND PHOTOGRAPHY; (BOTTOM) PHOTO COURTESY OF VISIT SALT LAKE



Salt Lake City Airport

AIRPORT/ FAIRGROUNDS

This is the first neighborhood many visitors will experience upon arrival in the home of the Greatest Snow on Earth™. It boasts the highest concentration of hotels, making it a great place to find a good deal, and it's a great starting point for exploring the heart of the city.

EAT AND DRINK

Chunga's (chungasmexican.com) dishes up inexpensive Mexican fare with Cancun flair—try the pineapple salsa and the fruit milkshakes. There's also **Red Iguana** (rediguana.com). Their magnificent moles explain the lines at both locations. Within minutes of the airport are hangouts **Garage Grill** (thegaragegrill.com) and **Craft Cafe by Squatters and Wasatch** (wasatchbeers.com).

PLAY

The orientation of this neighborhood means the parks have spectacular views of the city against the Wasatch Mountains. Visit **Rosewood Park**, **Westpointe Park**, **Riverside Park** and **Steensblik Park**, which has giant cat sculptures (slc.gov/parks). The **Albert Fisher Mansion and Carriage House** was built by a Salt Lake beer

baron. The grounds and adjacent **Jordan River Trail** (jordanrivercommission.com) make for a lovely outing. In the fall, the big to-do in this 'hood is the annual **Utah State Fair** (utahstatefair.com). You can also discover your inner archer at **Easton Archery** (eastonsaltlakearcherycenter.org).

SHOP

For more than 30 years, **SkiTrucks** (skitrucks.com) has put people "on the slopes for less!" In winter, the shop sells closeout ski packages and, in summer, outdoor clothing and equipment.

WHAT THE LOCALS KNOW

The neighborhood is home to Salt Lake City's "Radio Free Utah," **KRCL 90.9**, (krcl.org) a progressive voice that plays indie and heritage rock you won't hear elsewhere.



SALT FLATS BREWING CO.

Built in a former professional race facility, each Salt Flats brand takes its namesake from racing.

2020 Industrial Circle,
saltflatsbeer.com

Salt Lake
Chinatown

SOUTH SALT LAKE

South Salt Lake is a neighborhood of bungalows, ethnic eateries and easy access to the major thoroughfares in town. Lovingly referred to as SoSaLa by residents, the area has its share of hidden gems.

EAT AND DRINK

A barbecue scene staple, **Pat's BBQ** (patsbbq.com) has been doing it longer and better than most. Host to

live music on the weekends and succulent ribs every day, Pat's is a worthy dinner or lunch spot. One of the tastiest options in the city, **Oh Mai** (ohmaisandwich.com) offers delicious Vietnamese bahn mi. There are plenty of places to wash it all down. Local's favorite **Bjorn's Brew** (bjornsbrew.com) is great for java. Several distilleries are based in South Salt Lake. **Sugar House Distillery** (sugarhousedistillery.net) makes vodka and whiskey you can purchase on-site. **Beehive Distilling's** (beehivedistilling.com) bar is worth a visit.

PLAY

The recent expansion of Fitts Park included a unique fitness course for adults and children, a new lighted trail along Mill Creek and a bike training course. South Salt Lake offers the convenient opportunity to snowshoe in the canyons and have time left over to make it down

to the city for a casual or formal night out at one of the hundreds of restaurants just minutes away. The Creative Industries Zone is home to stunning public art from the annual Mural Fest.

SHOP

Need an inexpensive bike for mountains or road? Or maybe some bike-mechanic know-how? Non-profit **Salt Lake City Bicycle Collective** (bicyclecollective.org) is your place for all of the above.

WHAT THE LOCALS KNOW

Enter through the colorful, gold-roofed Chinatown gate and be transported to another time and place. **Salt Lake Chinatown** (saltlakechinatown.com) is a little complex on State Street, where you'll find the spacious Chinatown Supermarket, the city's largest Asian market. Hungry? Try **One More Noodle House**. (onemorenoodlehouse.com)



BONWOOD BOWL

Beers and a seven-ten split your idea of fun? Bonwood Bowl has Dude-worthy classic lanes.

2500 Main St., 801-487-7758,
bonwoodbowl.com



MILLCREEK

Nestled right at the base of the Wasatch Mountains, Millcreek is something of an outdoor-gear mecca. Not only can you shop for gear in this neighborhood, you can climb at a state of the art gym, hike with your dog and fine dine in the canyon.

EAT AND DRINK

Start your day with a hearty breakfast at **Roots Café** (rootscafeslc.com). Tucked in Millcreek Canyon, the iconic

Log Haven (log-haven.com) awaits with award-winning menus and wine lists. **Citris Grill** (citrisgrill.com) is a neighborhood staple, and **Table X** (tablexrestaurant.com) has the most exciting modern food in town, with fresh made bread. **Tres Hombres** (treshombres-cantina.com) dishes up massive portions of traditional Mexican and Tex-Mex.

PLAY

Momentum Indoor Climbing Millcreek (momentum-climbing.com) features world-class routes, where you'll crimp and jug 'til your arms give out. Another indoor option but with less athletic prowess needed: **Olympus Hills Bowling Lanes** (olympushillslanes.com). Hiking and biking options abound up **Millcreek Canyon** (slco.org/parks/millcreek-canyon). Two of the most popular trails are Grandeur Peak and Desolation Overlook. Both reward your exertions with spectacular views of the valley.

SHOP

Millcreek is the neighborhood to gear up for your outdoor adventures. **Black Diamond Equipment's** shop (blackdiamondequipment.com) has gear and advice from an athletic staff, get gear new or used from **Lone Pine Gear Exchange** (lonepinegearx.com) and **International Mountain Equipment (IME)** (imeut.com) is a rock climbers' paradise. Get your bike fine tuned at **Level Nine Sports** (levelninesports.com). If you need a tent, **Springbar** (springbar.com) is the home of Jack Kirkham's original canvas tent designs. For fashionistas, **Name Droppers** (shopnamedroppers.com) sells designer clothes on consignment.

WHAT THE LOCALS KNOW

For a quick hike to another splendid view, take Millcreek Canyon to Rattlesnake Gulch. Climb the Pipeline Trail; head west 'til you reach the ridge and enjoy the vista.



PROVISIONS

This bistro specializes in locally sourced contemporary eats, thin-crust pizza and craft cocktails.

3364 S. 2300 East, 801-410-4046, slcprovisions.com



HOLLADAY/MURRAY

This family-friendly neighborhood is quickly becoming a dining hub in its own right, with exciting new establishments opening up regularly. You can also enjoy quick access to the outdoors and some of Salt Lake Valley's unique historic attractions.

EAT AND DRINK

We probably shouldn't say it—because it's a closely held secret—but **Tea Rose**



GRANATO'S BLOCK PARTY 2700

A community food hall—with tacos, BBQ and Italian deli—founded by the original Granato's Gourmet Market.

4044 S. 2700 East, Holladay,
blockparty2700.com

Diner (bestthaifoodinutah.com/tea-rose-diner) serves delicious Thai food. At the renovated intersection of 2300 East and Murray Holladay Blvd, **Caputo's Market & Deli** (caputos.com) has taken root, as well as bakery/coffeeshop **Three Cups** (385-237-3091). Another excellent option at the intersection is **Layla Mediterranean Grill** (laylagrill.com). Just off the 6200 South I-215 exit, two of the valley's esteemed culinary dining experiences reside: **Tuscany Restaurant** (tuscanyslc.com) and **Franck's Restaurant** (franckfood.com). **Bandits Grill & Bar** is famous for its oak-smoked meats (banditsbbqutah.com). **Ice Haus** serves up a German influenced American bar menu of brats, wings and nachos with an array of beer (icehausbar.com).

PLAY

Wheeler Historic Farm (slco.org/wheeler-farm) is a restoration of the turn-of-the-century dairy farm of Henry J. Wheel-

er. The farm offers a tour of its historic houses. While on the farm you can milk a cow, visit with farm animals and go for a wagon ride.

SHOP

Shopping is one of the biggest sports in Murray and **Fashion Place** (fashionplace.com) houses all the mall staples plus some more unusual shops like candy store **Lolli & Pops** (loliandpops.com). Over at the up-and-coming corner of 2300 East and Murray Holladay Blvd., a number of new businesses are sprouting up every day. **Salt Washed Co.** (saltwashedco.com) is a women-owned boutique selling curated gifts and apparel.

WHAT THE LOCALS KNOW

The Desert Star Playhouse (desertstar.biz) wins for silly, family-friendly dinner theater with spoofs and campy shows with names like "My Big Fat Utah Wedding" that poke fun at local culture.

(TOP) AUSTIN DIAMOND PHOTOGRAPHY; (BOTTOM) PHOTO COURTESY OF BLOCK PARTY 2700



Topgolf

MIDVALE

Midvale has its own identity. It grew up separately from Salt Lake City with an economy, industries, culture and history all its own. And the town still takes its gritty independence seriously, offering a unique vibe in the middle of the Salt Lake Valley.

EAT AND DRINK

If you're looking for fine dining you can't do better



BOHEMIAN BREWERY & GRILL

Besides potato pancakes, pierogies and goulash, Bohemian offers lighter fare, like, gasp, salad. The best reason to go is the lager, including the Viennese and the üsseldorfer Altbier.

94 E. Fort Union Blvd, Midvale
 bohemianbrewery.com,
 801-566-5474

than **Epicure** (epicureslc.com), which serves contemporary American cuisine including brick-oven flatbreads. **Outlaw Distillery** (outlawdistillery.com) offers tasting tours. For a hearty breakfast, there's **Midvale Mining Company Cafe** (midvaleminingcafecatering.com) where the guys at the grill make hash browns like they mean it. The sopa de mariscos at **Noemi's Cafe** (noemiscafe.com) is a must for seafood lovers.

PLAY

The whole family can compete and polish golf skills at **Topgolf**, an entertainment facility that doubles as a neighborhood hangout with a full dining and drink menu (topgolf.com). At the **Midvale Museum** (midvalecity.org) explore how the discovery of silver in nearby canyons in the 1800s created a boomtown. But if living history is your thing, duck into **Old Towne Tavern** (801-566-3172), a bar with pool tables,

cheap beer, karaoke and horseshoes. **Level Two Social Games** (leveltwosocial.com) has axe throwing, football bowling and hot pizza.

SHOP

If you've got an outdoor adventure or big-game hunt planned, gear up at Salt Lake-based **Sportsman's Warehouse** (sportsmanswarehouse.com). It's basically a big box full of toys, from Carhartt to the highest quality smokers to awe-inspiring ways to play outside. In a wonderful collision of shopping and education, **Natur** (naturshowroom.com) is your destination for wildlife wonders, including fossils, framed insects and skulls. The kids will love it!

WHAT THE LOCALS KNOW

The Sandlot, the greatest coming-of-age baseball movie ever, was filmed in Midvale. Stephen King's *The Stand* also filmed creepy small-town scenes here.



Lone Star Taqueria

COTTONWOOD HEIGHTS

This slower-paced 'hood offers the best of both worlds: access to Downtown and its adjacent neighborhoods plus a quick trip to the mountain resorts and their wonderful, magical landscape.

EAT AND DRINK

From the fancy to the funky, you'll find the eats you're craving in Cottonwood Heights. **Market Street Grill** (marketstreetgrill.com) is a Salt Lake mainstay that makes

its name with fresh fish. At the base of Big Cottonwood Canyon, folks flock to **Porcupine Pub & Grille** (porcupinepub.com) and **Eight Settlers Distillery** (eightsettlersdistillery.com). **Carmine's** (carmines.restaurant) is the domain of Chef Carmine, from Naples, who serves his authentic Neopolitan cuisine. Try **Root'd Cafe** (rootdcafe.com) for pastries, sandwiches and a true neighborhood vibe. Two sushi restaurants, **Sushi Yah** (sushiyah.com) and **Tsunami** (tsunamiutah.com) will satisfy your raw passion. **Lone Star Taqueria** (lstaq.com) is a soulful Mexican outpost. Homemade is the only way at **Sicilia Mia** (siciliamiautah.com) serving time-honored Sicilian pizza and pasta specialties. For breakfast and brunch, try **Cottonwood Heights Cafe** (cottonwoodheightscafe.netwaiter.com).

PLAY

Big and Little Cottonwood Canyons and the four respective resorts offer mountain bike trails, hiking, wildlife viewing, and in winter, the Greatest Snow on Earth™.

SHOP

Because of its proximity to the canyons, the area is dense with purveyors of outdoor equipment. **Arcs Ski & Board** (skinsee.com) is known for excellent service and gear. Or dig for pre-owned gems at **Play it Again Sports** (playitagainsports.com).

WHAT THE LOCALS KNOW

The beloved dive bar, the **Cotton Bottom Inn** is a great spot to wind down after a day outside. Pool, cheap beer and a jukebox welcome hikers who come for its famous garlic burgers (thecottonbottom.com).



THE HOG WALLOW PUB

Enjoy the cozy fireplace or outdoor patio and live music at The Hog Wallow Pub.

3200 E. Big Cottonwood Canyon Rd.



Hale Centre Theatre

SANDY

The South Valley area is a perfect place to stay if you plan on spending most of your time near the resorts but want to enjoy urban amenities. Sandy, the ultimate basecamp, is 20 minutes from all the mountain activities you can handle but is also home to great restaurants and bars.

EAT AND DRINK

Sandy is dotted with pockets of dining hubs, and while

there is far too much savory charm to list everything, here are the highlights. Off of 11400 South and I-15, you'll run into a wonderland of tasty and healthy dining choices. Or meander down 700 East and you'll find some surprising delectable treasures. Order handcrafted cheesecake at **Tin Roof Grill** (tinroofgrill.net) as featured on "Diners, Drive Ins and Dives." Enjoy original entrees at **Tiburon Fine Dining** (tiburonfinedining.com). **Jim's Family Restaurant** (jimsfamilyrestaurant.com) is a classic. Visit **Royal India** (royalindiautah.com) for delectable curries and lamb korma. And don't miss **La Caille** (lacaille.com), French-inspired chef's cuisine in a fairy-tale chateau set in gorgeous grounds.

PLAY

Sandy offers movies and restaurants at urban hubs like **Jordan Commons** (megaplextheatres.com) and **Union Heights** (cinemark.com) as well

as horse and walking trails in **Dimple Dell** (slco.org/parks). **The Hale Centre Theatre** (hct.org) is a regional venue producing the family-friendly classics of American Theater.

SHOP

Mega sporting store **Scheels**, (scheels.com) isn't just about shopping. The massive store doubles as an amusement park, with a 65-foot operating Ferris wheel, mini bowling, a nostalgic shooting gallery and several sport simulators. **The Shops at South Town** (shopsat-southtown.com) offer grand shopping with 150 stores, and you can snag rare finds at **Gingerbread Antiques**.

WHAT THE LOCALS KNOW

Food, superheroes, brides, babies, guns—**Mountain America Expo Center** (MountainAmericaExpoCenter.com) has a convention for everything. The center hosts hundreds of shows annually.



REAL SALT LAKE

Rio Tinto Stadium is home to Major League Soccer's Real Salt Lake and their enthusiastic fans.
9256 S. State St., 801-727-2700,
realsaltlake.com



Loveland Living Planet Aquarium

DRAPER

A family-friendly neighborhood with a rapidly growing hi-tech business community, Draper is warm and welcoming with down-to-earth dining and lodging options and lots of places for outdoor recreation.

EAT AND DRINK

Known for its incredible 180-degree views of the Salt Lake Valley, **Cliff House Dining Pub** (cliffdiningpub.com) hits all the right notes with its selection of sushi, artisanal beers and craft cocktails. **Garage Grill** (thegaragegrill.com) is a fun hot rod-themed cafe with a full menu of beer-friendly food



CORNER CANYON

A scenic trail destination, snowbiking and shoeing are popular ways to travel this 4-mile loop.

Corner Canyon Regional Park

in a casual, fun atmosphere. Despite its name, **Pirate O's** (pirate-os.com) isn't a specialty store selling eye patches and parrots. It's a purveyor of fine and artisanal foods. If you want a stick-to-your-ribs breakfast, try **Penny Ann's Cafe's** (pennyannscfe.com) flap jacks or, for lunch, sammies at **Ridge Cafe** (ridgecafe.com).

PLAY

Draper offers a smorgasbord of options to keep the little ones entertained. **The Loveland Living Planet Aquarium** (thelivingplanet.com) is home to thousands of undersea creatures. **Boondocks** (boondocks.com) is the place for mini golf, bumper boats, go-karts, batting cages and a driving range. However, the real treat here is more than 90 miles of hiking and equestrian trails. Some iconic destinations include **Corner Canyon** and **Bell Canyon**. When conditions are right at the Point of the Mountain you can try hang gliding or paragliding. Give the kids some air at **Air-**

borne Trampoline Arena (airbornesports.com).

SHOP

Cactus & Tropicals (cactusandtropicals.com) has an incredible assortment of heirloom succulents, as well as exotic and traditional plants for home and garden. **Camping World** (campingworld.com) has all the RV supplies, accessories and parts to keep you going on your Mighty Five™ (Utah's five U.S. National Parks) adventure. Get lost in the wonderland of home goods (and meatballs) at **IKEA** (ikea.com) or find an assortment of shops at **Bangerter Crossing**, including the locally owned and beloved top-shelf grocer **Harmons** (harmonsgrocery.com).

WHAT THE LOCALS KNOW

The climbing crag known as **Red Rock** (wasatchmountainclub.org) was established by a dentist, hence the rock-climbing routes having names like "Dry Socket" and "Bad Case of Gingivitis."

(TOP) MICHAEL KUNDE, (BOTTOM) AUSTEN DIAMOND PHOTOGRAPHY



Gardner Village

SOUTHWEST VALLEY

Against the foothills of the Oquirrh Mountains, West Jordan, South Jordan, Bluffdale and Herriman are doorways to a multitude of outdoor activities, including snowshoeing and winter hiking.

EAT AND DRINK

Pop by **The Wild Rose** (wildrose-district.com) for brunch or stop into **The Break** (thebreakgrill.com) to catch a game, a drink and some food after a day out in Southwest Valley. **Redemption Bar &**

Grill (redemptionbarandgrill.com) is the go-to sports bar with a great selection of beer and beer-friendly fare.

PLAY

Hiking trails of all levels of difficulty cover **Yellow Fork Canyon County Park** (slco.org/parks/trails), making it an ideal place for casual amblers or serious hikers. Multi-use trails are enjoyed in season on foot or horseback, and wind in and out of scrub oak and aspen inhabited by wild turkey and deer. **Butterfield Canyon**, west of Herriman, is the starting point for hikes to a number of peaks, namely **Butterfield Peak** (the easiest summit), **Kelsey Peak**, **White Pine Peak** and **Lowe Peak**. The **Rad Canyon BMX Park** (radcanyonbmx.com) accommodates riders of all skill levels and ages. Visitors are welcome to bring their own bikes or grab a loaner, and clinics are available for newbies. Indoor and outdoor tracks mean racing

is available year-round. Catch a rugby match at Zions Bank Stadium, where the **Utah Warriors** (warriorsrugby.com) play.

SHOP

Pop into one of **SoDa Row's** (daybreakutah.com) many shops, like **Painter's Palette** (painterspalletteutah.com) or **Nest Boutique** (shopnestboutique.com). You can also swing by **Soda Row Barbershop** (801-302-9347) or **Lucienne** (801-280-9990) to get spruced up before hitting the town. **Gardner Village** (gardnervillage.com) is a lovely spot for window (or actual) shopping, with 26 locally owned specialty shops.

WHAT THE LOCALS KNOW

The three-quarter-mile-deep, two-and-a-half-mile-wide **Bingham Canyon Mine** (kennecott.com) is visible from space—and many places in the valley.



THE PORCH

Experience artisanal home cooking, including fried chicken and crawfish, on Daybreak's SoDa Row.

11274 Kestrel Rise Rd.,
801-679-1066, porchutah.com



Backcountry Retail Store

WEST REGION

Utah's second-largest city, West Valley City, joins Kearns and Taylorsville to create the most ethnically diverse area in Utah. That means it's the go-to place for diverse culinary experiences, unique shopping, plus theater, concert and sports entertainment year-round.

EAT AND DRINK

Within walking distance of the Maverik Center, **Myung**



UTAH OLYMPIC OVAL

You can follow in the blade marks of 2002 Olympic Winter Games' speed-skating great Apolo Ohno for a \$6 admission.

utaholympiclegacy.org/oval

Ga (801-953-0478) serves up delicious Korean BBQ. **Coppercreek Pub & Grub** (coppercreekpub.com) is famous for the Chubby Melt, a ground chuck patty smashed between two grilled cheese sandwiches. Some of the most diverse food along the Wasatch Front can be found in West Valley, including inventive sushi at **Fat Fish** (fatfishslc.com) and al pastor (pork roasted on a vertical spit) at **Jugos y Tortas El Morelense** (elmorelense.com), as well as unique spirits at **Waterpocket Distillery** (waterpocket.co).

PLAY

Check out a big-name concert or take in some hockey when the Utah Grizzlies take the ice at **Maverik Center** (maverikcenter.com) which was the official venue for men's and women's ice hockey during the 2002 Olympic Winter Games. Catch a show at **Mid Valley Performing Arts Center** (saltlakecountyarts.org) or **West Valley Perform-**

ing Arts Center (wvcarts.org). **Utah Cultural Celebration Center** (culturalcelebration.org) offers multicultural programs, concerts and exhibits.

SHOP

Swing by the **Backcountry.com Retail Store** (backcountry.com) to pick from the online retailer's catalog, and runners will fetch your gear from the connected warehouse. Visit the **Overstock.com Warehouse Outlet** (overstock.com) on the select days the outlet is open (check the website). If you can't find what you need there, you'll probably find it at **Valley Fair** (shopvalleyfair-mall.com), a center with 120 shops, including local favorite **Hammond Toys & Hobby** (hammondtoy.com).

WHAT THE LOCALS KNOW

What do Hillary Clinton and Axl Rose have in common? They've both been awarded the key to West Valley City.

(TOP) AUSTIN DIAMOND PHOTOGRAPHY; (BOTTOM) B. GROSEBY



The Great Salt Lake

GREAT SALT LAKE & SURROUNDING AREA

The Great Salt Lake is what's left of prehistoric Lake Bonneville, which covered most of what is now Utah. At 1,700 square miles, the great lake is still the largest salt water lake in the Western Hemisphere and a haven for hundreds of bird and mammal species. While there is concern that the lake is shrinking, the citizens of Utah are invested in protecting the Great Salt Lake due to its impact on the quality of

our snow, our local ecology, our economy and the human health of the residents of the Salt Lake Valley.

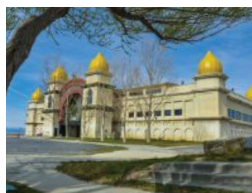
PLAY

The best way to experience the Great Salt Lake is at **Antelope Island State Park** (stateparks.utah.gov). To reach the island, drive north on I-15 to exit 332 in Layton. Follow the signs west to the causeway. Besides the amazing views and a historic cattle ranch, you'll find bison, raptors, coyotes and antelope. The quickest way to view the lake is the 15-minute drive to the marina at **Great Salt Lake State Park** (stateparks.utah.gov), 16 miles west of Salt Lake City on I-80, exit 104.

of the Jetty, visit Nancy Holt's **Sun Tunnels** (about 200 miles northwest of Salt Lake City, near the ghost town of Lucin), an installation of concrete culverts that track the winter and summer solstice. The works are remote so check the weather before making either trip. Add in a stop to **Golden Spike National Historic Park**. (nps.gov/gosp) The joining of the western and eastern parts of the United States was a monumental achievement, marked by a national historic site in Utah. In the summer, the replica trains at the park are lined up in their historic face-to-face positions. Check website for dates.

WHAT THE LOCALS KNOW

A drive along the shore of the country's largest salt lake confirms that it is anything but "America's Dead Sea." Between two and five million birds depend on the lake.



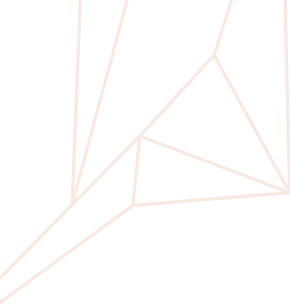
SALT AIR

Saltair, once known as the cursed Coney Island of the West, now hosts all-age rock concerts.

Off I-80 (I-80 west if coming from Salt Lake City area) it is Exit 104 Saltair Drive. thesaltair.com

SEE

On the northern arm of the Great Salt Lake lies Robert Smithson's land art, **Spiral Jetty**, a 1,500-foot basalt rock sculpture unwinding into the lake at Rozel Point. West



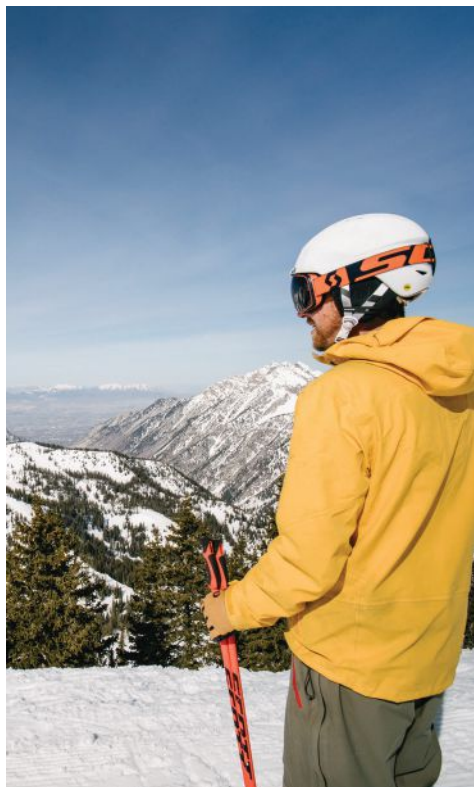
SALT LAKE SKI SUPER PASS

How can skiing in Salt Lake get any more awesome? With the Ski Super Pass, your discounted lift ticket to four world-class resorts.

With it, you'll have quick access to Alta, Brighton, Snowbird, and Solitude, with discounted passes to the lifts. What's more, you'll also save on equipment rentals as well at participating locations.

And your rate stays the same all season, even holidays. With no commitment to any resort in advance. The powder is calling, so don't wait.

Get all the details at visitsaltlake.com.



SALT LAKE

visitsaltlake.com



MOUNTAINS

Those gorgeous mountains are more than a backdrop—they are a part of Salt Lake. Our neighborhoods continue into the Wasatch with the communities and resorts that call it home. We invite you to explore—be our guest.



Brighton

THE SALT LAKE SKI SUPER PASS

Ski Four Resorts in Four Days

The Salt Lake Ski Super Pass is your discounted lift ticket to Salt Lake's four world-class resorts. With the Super Pass, your rate stays the same all season, even on holidays—with no commitment to any resort in advance. You'll spend less money to get to the slopes faster. The Salt Lake Ski Super Pass (superpass.visitsaltlake.com) includes public transit fare when the ski bus is in service and rental shop discounts.

WHO NEEDS A SALT LAKE SKI SUPER PASS?

You Do. If you're going to ski or board

Salt Lake this year, the Super Pass is your ticket to getting a whole lotta stuff for less: The multi-day Super Pass gives you a deep discount on lift tickets and you can customize your pass for 3-10 days. Also, you can use your pass at any of four resorts—Alta, Brighton, Snowbird, or Solitude. The Salt Lake Ski Super Pass (superpass.visitsaltlake.com) includes public transit fare when the ski bus is in service and rental shop discounts.

ALTA SKI AREA

The resort is one of America's oldest and

is home to some of Salt Lake's most spectacular terrain, much of which can only be accessed by backcountry experts willing to hike for it. The lift-accessed runs are often steep and challenging. But don't worry. There are mellow runs too, and Alta skiers are a welcoming bunch, eager to share their arcane knowledge of hidden powder stashes, down-mountain strategies and the history and lore of this classic American resort. Alta is for skiers only. No boarders allowed. Alta breeds Altitude. alta.com

BRIGHTON RESORT

Brighton is arguably Salt Lake's most laid back ski hill. Unpretentious and friendly, its sprawling runs attract a young crowd, a large contingent of which are snowboarders. A combination of lower lift-ticket prices, free skiing for kids ages 10 and under, an appealing mix of beginner and expert terrain, wide, forgiving runs and a mellow attitude make Brighton a great option for beginners and casual skiers and boarders. Brighton also features night skiing with more than 200 acres of lighted runs to extend your day on the mountain. brightonresort.com

SNOWBIRD SKI & SUMMER RESORT

Snowbird is all about the future. A sprawling resort served by an impressive array of high-speed chairs and its Aerial Tram, Snowbird is a playground for those who like to ride or ski fast, steep and deep. While on-mountain thrills will fill up your day, the 'Bird's vibe is most apparent on the tram deck, a convivial central plaza where everyone gathers for mid-day breaks and post-last-tram boasting. snowbird.com

SOLITUDE MOUNTAIN RESORT

Find solitude this winter. This resort has something to offer skiers and riders of all abilities with an average of 500 inches of annual snowfall, 1,200 acres of incredible terrain, 77 named runs, three bowls and a Nordic Center. The mountain's layout is a tantalizing buffet of green, blue and black runs. You'll see why the resort brags about its fresh, untouched powder. solitudemountain.com

AUSTEN DIAMOND PHOTOGRAPHY





LITTLE COTTONWOOD CANYON

One of the two largest canyons within the mountains that tower above the city, the somewhat misnamed Little Cottonwood takes adventurers up to big mountains and impressive resorts.

EAT AND DRINK

In **Alta** (alta.com), **The Shallow Shaft** (shallowshaft.com), independently owned for 47 years, offers spectacular views and an adventurous menu featuring local ingredients and an award-winning wine list. Or get casual comfort food at the rustic **Rustler Lodge** (rustlerlodge.com). The sprawling **Snowbird Resort** (snowbird.com) offers a wide range of dining options, but the two finest dining experiences are the elegant **Aerie**, offering an eclectic menu ranging from local game to freshly flown-in sashimi, and **The Summit on Hidden Peak**—offering mountaintop outdoor dining. Meet the resort's resident Porcupine

and enjoy a decadent cut of dry-aged steak on the **The Steak Pit's** patio. The restaurant-bar in Snowbird's Cliff Lodge, **SeventyOne**, pays homage to the wild and woolly days of the resort's beginnings in the early 1970s. It features a wide-ranging menu that includes small bites and full entrees enjoyed best on its open patio. **Porcupine Grill** (porcupinepub.com), at the base of the canyons, offers a menu that ranges from light to hearty. Plus beer. It's best to check ahead with all restaurants to plan around seasonal changes to hours.

PLAY

Just beyond Alta lies the **Albion Basin** with its network of alpine trails to challenge every level of hiker. In late summer, the paths roll through acres of wildflowers. Hidden Falls Trail is especially kid-friendly. **Snowbird** also offers a barrier-free trail that allows wheelchairs to access views of the canyon down



AUSTEN DIAMOND PHOTOGRAPHY



to Salt Lake Valley. The Mountain Coaster, the Alpine Slide, a climbing wall and a ropes course are all summertime-only Snowbird mountain experiences. Enjoy the breathtaking 80-mile vistas from the top of Snowbird's 11,000-foot tram. Below the tram is a series of hiking and biking trails to explore the resort's three main drainages—Peruvian Gulch, Gad Valley and Mineral Basin. While most folks ride or hike down the trails after riding up, you can also take the intrepid hike up.

GETTING THERE

The mouth of Little Cottonwood Canyon is accessed by the I-215 Belt Route and Wasatch Boulevard.

WHAT THE LOCALS KNOW

Dick Bass, the co-founder of Snowbird, was the first person to climb the highest point on each of the seven continents.



A LITTLE PIECE OF SWITZERLAND

In the early planning of Snowbird, co-founder Dick Bass visited Zermatt, the famous ski village in the Swiss Alps, known for its access to the Matterhorn Mountain. Bass met with the Mayor of Zermatt with the idea that Zermatt and Snowbird would be sister cities. The mayor agreed and had an actual piece of the Matterhorn chiseled from the famed peak and sent to Utah. It is displayed on Snowbird's Tram Deck.



SALT LAKE CITY DAY TOURS

Want to experience Salt Lake City and the beauty of the surrounding area but don't have a lot of time? Join Southwest Adventure Tours to see some of what is waiting for you here! Learn about the history of the valley, the eclectic people that call this area home and experience the architecture and outdoor space found in Utah's Capital City. Or head to the Great Salt Lake and Antelope Island for nature views and opportunities to see bison, mule deer, bighorn sheep, pronghorns, and millions of birds!

3 AMAZING DAY TOURS

- Salt Lake City Driving Tour
- Salt Lake City Walking Tour
- Great Salt Lake & Antelope Island Tour



SKI LITTLE COTTONWOOD

Home of two of the world's most famed and challenging resorts—Snowbird and Alta, both of which receive some of the highest snow totals in the state each season. Little Cottonwood is known for its deep powder and steep slopes covered in the Greatest Snow on Earth™.

RYAN DAY THOMPSON



ALTA

A skiers-only affair

FOR DECADES PEOPLE have come to Alta Ski Area for deep powder skiing and a laid-back feel—a feeling that many locals describe as ‘Alta Magic.’ Your first day skiing Alta, be it a bluebird day or a powder day, you will un-

derstand the magic surrounding this mountain. One can often overhear a fellow skier on the lift or at the bar saying, “that was the best run ever” or “that was the deepest day of my life.”

Nestled at the end of Little Cottonwood Canyon, Alta’s base area sits at 8,530 feet. Most slopes are north-facing, which preserves the 547 inches of average season snowfall of light, dry and deep snow. Glaciers formed the mountain’s two sides. This left the top with steep slopes and more mellow terrain at the bottom, making for fantastic beginner and intermediate runs. Smiles and passion have always been prevalent at Alta since 1938, the first year Alta started spinning the original one-seat Collins lift.

Alta started as a mining town in the late 1800s. Once the mines dried up, three Norwegian brothers, Corey, Sverre and Alf, hand-selected Alta’s ski runs. Alf Engen was hired by the Forest Service to determine if the slopes would make for a viable ski area. In 1938 Alta Ski Area opened with one stipulation from their partner, the Forest Service. To operate on Forest Service land, Alta had to

JUST THE FACTS

Base elevation
8,530 feet

Skiable acres
2,614

Runs
119

Average annual snowfall
547 inches

Lifts
6

Alta-Bird Pass
The combined terrain of Alta and Snowbird on one pass provides powder-

hounds the best terrain on the planet. 5,114 acres, 20 lifts, 256 ski runs and 547 inches of average snowfall between the two mountains.

Deals
Alta’s “Sunnyside at 3” season pass is \$99 for the Sunnyside lift from 3-4:30pm any day of the week with no blackout dates.

Contact
801-359-1078, Alta.com

Get the Gear
For information on gear and outfitting, go to Alta.com/rentals-and-retail.



revegetate and plant trees on Alta's barren slopes to maintain the environment as it had been before the miners.

Fast forward to today, Alta has made good on that promise, planting over 50,000 trees and 69,574 native plants since 1991 through the efforts of the Alta Environmental Center.

There are precious few places in the world like Alta. The ski area and its small town at the base grew organically around a shared love of skiing. Despite welcome upgrades to higher-speed lifts and direct-to-lift passes, Alta remains proudly rooted in its past. The soul of Alta was founded on wooden skis, in woolen gear where skiing was just a way of life. Skiing is still a way of life for Alta skiers which is why we like to say, "Come for the Skiing, Stay for the Skiing." Sorry, no snowboarding allowed.

NEW ADDITIONS TO ALTA

Alta has not seen much change over the years. The trees are taller, the lifts a little faster (a new Sunnyside high speed six-pack lift was added in 2023) and the same powder skiing and mountain views are still being enjoyed by all. Alf's restaurant expanded in 2021, giving us more space to spread out at our favorite mid-mountain day lodge. After lunch at Alf's, you can hop on the Supreme lift. A few years ago, the Supreme lift and Cecret lift were combined with a new loading station located just outside of Alf's. Last season, an additional Alta Ski Shop was added over on the Albion side. They offer ski rentals, Alta souvenirs, custom boot fitting and more.

SUSTAINABILITY EFFORTS

The Alta Environmental Center (AEC) was created in 2008 to guide the ski area's efforts to preserve the natural environment in which Alta operates. Summer is a busy time for the AEC with tree and seedling planting, tree harvesting, bird surveys, invasive weed pulls and more. The AEC has helped Alta with restoring over 4,000 square feet of wetlands. To date, the AEC has offset Alta's carbon footprint by 94 tons with solar panels, an EV charging station and a Leeds certified building. As a result of some ski run improvements on Sunnyside, the AEC worked to revegetate the disturbed land. They also re-

FOR THE KIDS: SKIING FOR ALL AGES

The Alta Children's Center is a full-service childcare facility catering to children ages two months to 10 years old, located at Albion Base. An All-day visit includes 3 meals and reservations are required. For more information, visit altachildrencenter.com or call 801-742-3042.

The Alf Engen Ski School offers private lessons for adults, children and families. For more information, call the Alt ski school office at 801-799-2271.

vegetated the area at the top of the Supreme lift. A project to widen the Devil Castle Road will give skiers more room as they make their way over to No. 9 Express and Rock 'n' Roll. alta.com/environment

TOP RUNS

Alta's most classic line is Alf's High Rustler named after legendary Alf Engen, director of the Alf Engen Ski School for over 40 years. You can look up from the Wildcat parking lot and see the straight, perfect fall-line run dropping 1,200 vertical from top to bottom. Do not miss Ballroom when the rope drops after a storm. This intermediate powder bowl is below Mt. Baldy and holds snow perfectly. You will find fellow powderhounds skiing alongside you. If you are up for a challenge that includes a hike, head to Gunsight. The steep entrance can be intimidating, but it is well worth it.

EAT AND DRINK

Alta has three day lodges with restaurants. Watson Café is located mid-mountain off the Collins lift and serves its famous chili daily. Alf's Restaurant is on the other side of the mountain serving hot hamburgers, fries, soups and hot/cold sandwiches. At the Albion base, Albion Grill serves daily specials. If you are a coffee lover, check out Baldy Brews in Watson's for espresso and steamers. Enjoy a sumptuous meal at Snowpine Lodge's Swen's Restaurant.



SNOWBIRD

Flying into the future at the 'Bird

IF SNOWBIRD'S NEIGHBOR Alta is a nostalgic throwback, Snowbird is all about the future. A sprawling resort served by an impressive array of high-speed chairs and its brand new tram, complete with floor-to-ceiling windows and a rooftop balcony, Snowbird is a playground for those who like it fast, steep and deep.

The experience of skiing and snowboarding at Snowbird is thrilling. The 125-capacity Tram drops you off atop Hidden Peak at 11,000 feet above sea level revealing a jaw-dropping panorama of high-alpine wonder in any season. To your left is Mineral Basin, a wide-open mix of blues and cliff-hucking black diamonds served by the Mineral Basin and Baldy Express Lifts. To your right is Gad Valley, topped with an imposing cirque that rolls out beneath the jagged peaks of the American Fork Twins. Behind you is the Peruvian Gulch, accessed from the base by Peruvian Lift and, from where you are on Hidden Peak, by North America's only ski tunnel, a 600-foot hole in the mountain below

wherein you ride a rubbery conveyer belt between the two sides. The Summit, Snowbird's year-round guest facility located atop Hidden Peak, now offers easy access to skiers, snowboarders or Tram passengers on foot.

Inside The Summit, guests enjoy a heart-healthy menu of French-Rotisserie inspired meals, local Utah craft beers and amazing 360-degree views of the Wasatch Mountains.

Both Alta and Snowbird have the highest snow base counts among Utah resorts, and their north-facing slopes mean that the snow stays around longer. Snowbird will stay open as long as it has snow; some years this has extended its season to the Fourth of July.

Find your groove in any of Snowbird's three main areas. Mineral Basin has a lovely range of cruisers and groomers. Once you've picked your way down from The Cirque into Gad Valley, the mid-Gad runs are a great mix for beginners and experts alike. The newly-renovated Creekside Lodge in Gad Valley now offers new dining. The Creekside Lodge is now

COURT LEVE (LEFT), ALEXA MILLER (RIGHT)



JUST THE FACTS

Base elevation
7,760 feet

Top elevation
11,000 feet

Skiable acres
2,500

Runs
169

**Average annual
snowfall**
500 inches

Lifts
13

Night skiing
Yes

Freebies
Children ages 6 and under ride the Snowbird chairs for free. Snowbird lodging guests can night ski for free on the Chickadee Lift on Friday and Saturday nights.

Parking
Be sure to check Snowbird's website for parking information, as options change seasonally.

Contact
801-933-2222,
snowbird.com

home to Snowbird's famed Mountain School for beginning skiers and snowboarders. A magic carpet located just outside the doors of the lodge helps students reach beginner terrain serviced by the Baby Thunder Lift. For your back to base closeout, Chip's Run is a 7.5-mile blue run that gives you a great ride.

While the thrills on-mountain will fill up your day, the Bird's vibe is most apparent on the sunny Tram Deck, an energetic and convivial central plaza where everyone gathers for mid-day breaks and post last-Tram boasting. Grab a beer and some refueling snacks from The Birdfeeder to share with friends on the Deck. It's a clubby atmosphere but by no means exclusive.

THE REST OF THE STORY

Skiers and snowboarders from around the world flock to experience the Bird's steep powder slopes, but beginner and intermediates will find plenty of terrain. The brand new Aerial Trams, Snowbird's crown jewels, whisk skiers up 2,900 feet in just 10 minutes to Hidden Peak—the top of Utah's longest vertical rise. Two new lifts have cut ride times in half to some of the Bird's best terrain.

Ted Johnson and Texas oilman Dick Bass opened Snowbird in December 1971 with the dream to create a year-round resort for the “enhancement of body, mind and spirit.” More than just a ski destination, Snowbird also provides an equally impressive experience off the slopes. Only The Cliff Lodge, Snowbird's flagship hotel, offers easy ski-out/ski-in access, a world-class spa, heated swimming pools, three restaurants and two lounges.

THE VIBE

Mind-blowing bowls, chutes and glades have always attracted the expert skiers and riders to Snowbird, but the mountain scene has grown to become a more diverse crowd. There's a slice of paradise for everyone, whether you are the dedicated local or a family vacationing at the resort. From steeps that never stop to family-friendly skiing areas, Snowbird makes it easy for everyone to enjoy time on the mountain.

FOR KIDS: SNOWBIRD'S SKI SCHOOL

Snowbird's options for children start at the beginning. Superior Childcare is a state-licensed facility. Children from six weeks to 24 months of age may be cared for in the nursery where the staff-to-child ratio never exceeds one to four. Childcare for kids age 2 to 12 years includes outdoor and indoor activities such as arts and crafts, games, free play, hot lunches and morning and afternoon snacks. For the kids who are ready to ride, there are a multitude of options geared for literally every ability level and age starting at age 3. From Mini Miners Camp in the family-zone to Baby Thunder area to exploring natural and man-made features, Snowbird has your kids covered. snowbird.com

THE RUN

For some of the best of the Wasatch, head to the top of Little Cloud Quad via the scenic Aerial Tram and over to Road to Provo. This traverse brings you to a gold mine of options. Intermediates can follow the traverse to Mark Malu Fork, a blue groomer bringing you down to the bottom of Little Cloud, with the option to continue to lower parts of the mountain.

For the more adventurous, continue to Last Choice and to Knucklehead Traverse. On a powder day, keep going across to find some untracked stashes.

EAT AND DRINK

Whether it's a burrito to fuel up before the first morning tram or a sandwich for lunch, the General Gritts Deli (Snowbird Center, Level 1) is a local favorite. Grab a snack or hearty lunch at the on-mountain Mid-Gad Restaurant. For visitors looking to stay for dinner, be sure to check out SeventyOne (The Cliff Lodge, Level 2), featuring American grill favorites, an open kitchen, a gorgeous year round patio and a retro vibe.

Welcome to Wonder

just 3.5 hours
from SLC



Blowhard Trail | Dan Ransom



Zoe Galligan-Stierle (left) as The Little Girl and Aaron Galligan-Stierle as Tateh in the Utah Shakespeare Festival's 2021 production of *Ragtime*
Karl Hugh | Copyright Utah Shakespeare Festival 2021

*From the grand stages at the Utah Shakespeare Festival
to the red rock splendor surrounding Cedar Breaks,
wonder awaits in Cedar City, Parowan, and Brian Head.*

VISIT
Cedar City
BRIAN HEAD
visitcedarcity.com



BACKCOUNTRY

Skiing and riding (for the avalanche aware)

BACKCOUNTRY SKIING AND RIDING

(a.k.a. alpine touring) is the fastest-growing segment in the snowsports industry for a number of reasons (not the least of which are the incredible advancements in and the availability of necessary equipment). Combine that with the simple desire to escape the crowds, incredible access to unparalleled scenery and famed Utah powder—particularly in the Wasatch Mountains—it's easy to see why so many skiers and snowboarders are now into “earning their turns.”

Backcountry skiing and riding also don't require a lift ticket or season pass; simply head up one of the many canyons with a designated trailhead, ensure your avalanche beacon and your partner's beacon are on and working before you start climbing. If you're new to backcountry skiing and want to try it without the initial investment, or you're visiting and didn't bring your own equipment, there are a number of local shops where you can rent gear and hire a certified guide.

In addition to equipment that simplifies traveling uphill (or “skinning”), to access the solitude and untracked powder skiers and boarders dream of, some more essential gear is required. This includes the aforementioned avalanche beacon (transceiver), a shovel, a probe and a backpack that will carry all of this gear comfortably.

However, the most important piece of “equipment” cannot be purchased, only earned. It is invaluable to those venturing in backcountry terrain: knowledge. Specifically, knowledge of how to travel safely in uncontrolled terrain and how to use the tools every person venturing into the backcountry—or beyond the resort's boundaries—MUST have.

If you decide to venture into the backcountry, check all relevant avalanche conditions first. Here in Utah, we are fortunate to have the Utah Avalanche Center (utahavalanchecenter.org), one of the world's preeminent organizations for educating backcountry skiers and riders, offering the requisite daily information to “keep you on top.” One of the UAC's most successful projects to keep backcountry skiers and riders safe is its “Know Before You Go” avalanche awareness program, a free one-hour tutorial every skier and rider planning to venture into the backcountry should take. The UAC also offers daily easy-to-digest avalanche forecasts, critical information to have in the ever-changing conditions of the Wasatch Mountains.

Backcountry skiing is fun, rewarding and offers incredible skiing, riding and scenery, but before taking advantage of our amazing terrain, we encourage you to be safe and always BE PREPARED!

R. CHESKI



Savant Savings Stunner

**Nike, Abercrombie & Fitch, Lucky Brand,
Boardriders, Pearl Izumi, Coach, and more!**

Find More. Own it!



OUTLETS
PARK CITY

outletsparkcity.com



@outletsparkcity

THE SCIENCE BEHIND THE GREATEST SNOW ON EARTH™

UTAH HAS THE Greatest Snow on Earth™.

And yes, weather forecasting technology has proven that our great snow is not a myth—it's a reality we experience every winter. Believe it or not, most Utah snowflakes are "defective, poorly formed and broken when colliding into other snowflakes." There's no doubt about it—Utah's snowflakes are weird and while no two snowflakes are alike, no other snowflakes are like Utah's.

Why is Utah's snow so great—the lightest, the driest, the most powdery? You may have heard about the lake effect, which occurs when the difference between the temperature of the relatively warm lake's surface and the cold air above the lake collide to create these special conditions. When this difference in temperature is great enough, moisture and heat from the lake's surface rise into the lower levels of the atmosphere and generate snowfall. But actually, that only accounts for about five percent of the annual snow in the Cottonwood Canyons.

Besides the vaunted lake effect, Utah snow is great because of its water content—not a lot—and the pattern of its fall. Snow that's less than seven percent water is considered light, and Utah snow has an average density of 8.4 percent—perfect for powder skiing.

The key to our amazing snow is a quick-change temperature fluctuation common to Utah snowstorms. Often a storm starts when it's warmer, which creates a water-dense base layer, and as the temperatures drop, lighter snow follows. This is called "right-side-up" snowfall—the fluffy stuff stays on top. So, add topography plus storm temperature, plus depth, plus frequency and you have the recipe for the Greatest Snow on Earth™.

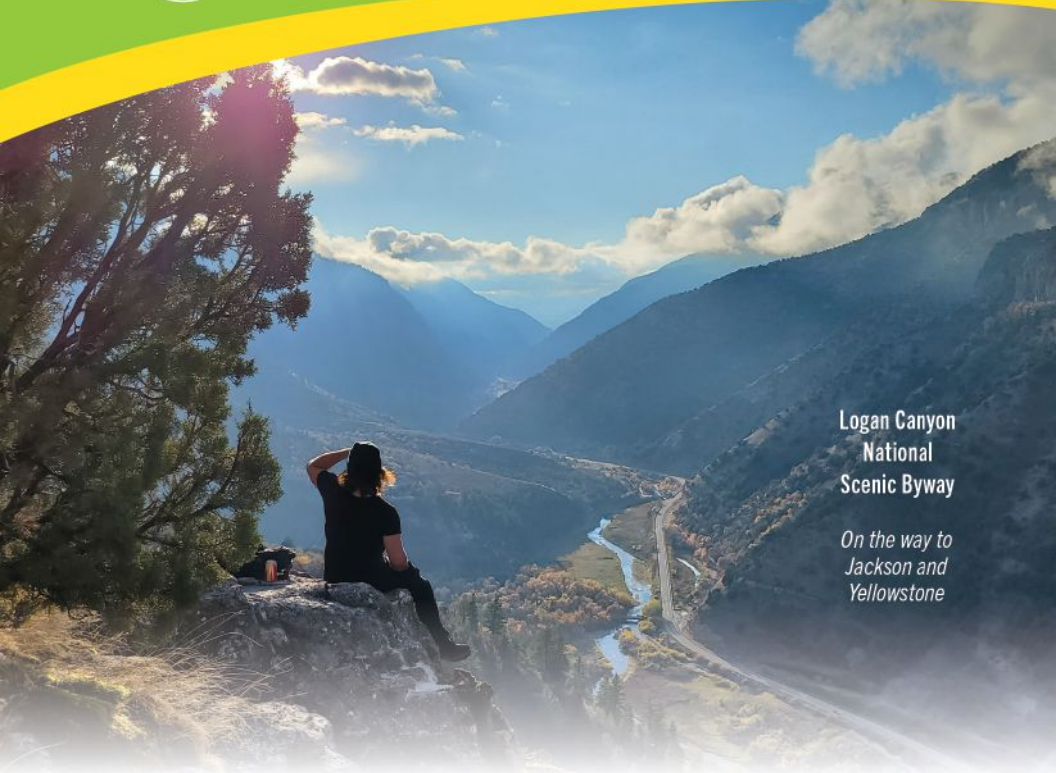
And remember—even if you aren't a skier—there are other ways to experience Utah's famed snow. Fat Bikes, snowshoes and winter hiking are all ways to take advantage of Utah's famed powder.



AUSTEN DIAMOND PHOTOGRAPHY



**FIND A SEAT,
WE'LL PUT ON A SHOW**
Indoors or out, Logan has fabulous experiences waiting for you.



Logan Canyon
National
Scenic Byway

*On the way to
Jackson and
Yellowstone*

Plan to STAY AWHILE

- Check the math. **26** trailheads + **290** miles of trails = Endless outdoor adventure
- Festivals and Logan's Theatre District offer unique fun and world-class performances
- **Foodie Lovers Unite!** 20+ delicious stops on our self-guided Trek
- Explore Logan's **Historic Downtown**
- Affordable **Hotels**
- Variety of tasty **Restaurants**

Utah Festival Opera & Musical Theatre



(800) 882-4433 • ExploreLogan.com

LIFE
UTAH
ELEVATED



BIG COTTONWOOD CANYON

If you think Utah is a desert, you're in for a surprise in the nearby Wasatch Mountains. Big and Little Cottonwood canyons offer classic alpine experiences—hiking and biking through aspen-shaded trails, fly fishing and chairlift rides with spectacular views. But, you can also choose to be pampered at one of the world-class resorts.

EAT AND DRINK

At Solitude Resort, **Honeycomb Grill**, (solitudemountain.com), offers dynamic, contemporary American cuisine using fresh, locally-sourced and sustainable ingredients along with a cocktail list. The best part? Mountain views. For breakfast or an après-hike refueling, try **Silver Fork Lodge** (silverforklodge.com) or **Haus Pizzeria & Creamery** (solitudemountain.com) for fresh coffee or espresso, pastries

or a pizza. If the kids need a good-camper reward, order hand-packed ice cream cones.

PLAY

No better way exists to enjoy the Wasatch Mountains than to hike or bike them. **Solitude Village** offers high-altitude mountain biking via the Sunrise Chairlift. Featuring over 20 miles of tree-lined trails, Solitude has some of the most scenic and accessible single track in Utah. Sunrise Chairlift operates three days a week, but guests are welcome to pedal up seven days a week during fall daylight hours. The Brighton area offers hiking for all levels. **Silver Lake** has a trail and boardwalk around it, perfect for an easy walk, duck feeding, birdwatching and trout fishing (with a license) and maybe a moose sighting (see sidebar). The trail to



Desolation Lake is a long but rewarding hike back to some amazing high-alpine scenery. For the more hardy, a hike to **Lake Blanche** in the middle of the Twin Peaks Wilderness is a must. Information on hikes is available in town at **REI** (rei.com) and **Springbar** “**Home of Jack Kirkham’s Original Canvas Tent Designs.**” (springbar.com) or at the info **HQ at Silver Lake** (fs.usda.gov).

GETTING THERE

The mouth of Big Cottonwood Canyon is served by the I-215 Belt Route and Wasatch Boulevard.

WHAT THE LOCALS KNOW

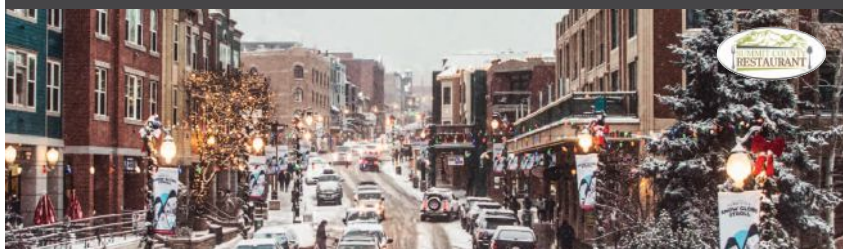
If camping is your thing, two national forest cozy wooded campgrounds are available, including **Tanners Flat** and **Albion Basin** campgrounds. reserveamerica.com

MOOSE IN THE MOUNTAINS

Both Little and Big Cottonwood canyons provide habitat for moose. Hiking trails in either canyon comes with the possibility that you might see one of these majestic creatures. As exciting as that can be (and is) beware, moose are dangerous, especially during mating season in late summer and early fall. If you come across a moose, appreciate from afar and give them plenty of room. The boardwalk around Silver Lake is a hot spot for moose sightings.



historic park city Inspired local dining, unique shopping,
masterful arts, culture and more – only 40 minutes from Salt Lake City.
historicparkcityutah.com



Not Your Run of the Mill

SHOPPING • DINING • EXPERIENCES

GARDNER VILLAGE

**Local shops and restaurants
nestled around the historic
Gardner Mill and Silo.**

12 MILES SOUTH OF DOWNTOWN SALT LAKE CITY
1100 WEST 7800 SOUTH • WEST JORDAN
GARDNERVILLAGE.COM



SKI BIG COTTONWOOD

The two resorts in Big Cottonwood Canyon—Brighton and Solitude—both share the canyon’s signature wide-open runs. Brighton is known as a friendly hill, especially inviting to learners while Solitude’s access to side-country and in-bounds hiking make them both worth a visit.

AUSTEN DIAMOND PHOTOGRAPHY



SOLITUDE

The name says it all

JUST 34 MILES from the Salt Lake City International Airport, Solitude has something to offer skiers and riders of all abilities and features more than 1,200 acres of terrain, ranging from groomed runs to powder glades in one of North America's snowiest canyons.

Solitude provides two convenient and accessible base areas: Moonbeam offers day visitors easy access to a full range of services and amenities while Solitude Village is home to the resort's lodging, fine dining and spa. Moonbeam services day skiers and riders while the village area is home to the resort's lodging guests. From the Moonbeam base you'll have easy access to the Moonbeam and Eagle Express Chairlifts and, from there, Solitude's expansive and varied terrain, on-mountain dining and Solitude Village. Moonbeam Express serves much of Solitude's beginner terrain, and you'll find eager ski schoolers playing follow the leader. Eagle

Express Chairlift runs above a number of solid-blue runs, some groomed and some left au naturel, as well as a few expert options.

From Solitude Village, the Apex Express Chairlift provides easy access to the realigned and upgraded Summit Express Chairlift, which takes you to the top of the mountain. Summit Express opens up Solitude's most daunting and rugged terrain, the famed Honeycomb Canyon. On a powder day, Honeycomb's steep chutes and glorious tree runs feel more like backcountry than in-bound resort skiing. Sunrise chairlift also runs out of the village base area and its easier blues and greens are a great place for learners to work out the kinks.

Seeking an alternative to alpine skiing or snowboarding? Solitude's Nordic Center offers nearly 20 kilometers of groomed Nordic trails in addition to 10 kilometers of snowshoeing trails.



JUST THE FACTS

Base elevation
7,994 feet

Top elevation
10,488 feet

Skiable acres
1,200

Runs
80

**Average annual
snowfall**
500 inches

Lifts
8

Night skiing
No

Ski Brighton (too)

Guests can ski both Solitude and Brighton with an Ikon Pass, Ikon Base Pass or Visit Salt Lake's

Ski Super Pass.

Contact

801-534-1400,
solitudemountain.com

Get the Gear

For information on rental equipment, visit solitudemountain.com

Parking

Be sure to check Solitude's website for parking information prior to heading up the canyon.

THE REST OF THE STORY

Maybe it's by design or maybe it's a self-fulfilling prophecy, no other Utah resort is more aptly named than Solitude, where lift lines are scarce and elbow room on even the main runs is plentiful. Lack of crowds, a trail mix of 10% beginner, 40% intermediate and 50% advanced/expert, along with a wide variety of comfortable lodging, dining and après options make Solitude one of the most family-friendly resorts in the state.

Solitude was first developed for skiing by Utah uranium tycoon Robert M. Barrett in 1957. Legend has it that Barrett decided to start his own ski resort after being kicked out of the bathrooms at Alta Ski Resort, which were reserved for Alta guests only at the time. The DeSeelhorst family purchased Solitude in 1977, adding Utah's first high-speed, detachable quad chairlift and upgrading the base areas. After being purchased by Deer Valley Resort in 2015, Solitude became part of the Alterra Mountain Company in 2018 and is an inaugural destination on the Ikon Pass.

Solitude's quaint, European-style village offers a variety of hotel rooms, individual condominiums, townhomes and private homes. All homes and condominiums feature full kitchens, comfortable living areas, concierge services and complimentary parking. Lodging guests can enjoy Club Solitude's heated outdoor swimming pool and hot tubs, plus many family-oriented activities.

THE VIBE

Don't be fooled by Solitude's Currier-and-Ives vibe with a quaint, European-style base village. You'll likely have Honeycomb Canyon's bowls and chutes to yourself. For backcountry skiers, Solitude's summit gates have some of the best access to stadium-sized cirques and closet-tight chutes in the Wasatch Range.

THE RUN

The longest (and most scenic) slope is Woodlawn from the top of Summit Express to the bottom of Eagle Express.

EAT AND DRINK

Moonbeam Lodge lets you maximize your day on the hill with convenient breakfast and lunch options, plus wraps and sandwiches

to go, to fill you up and get you on your way. Argenta Pub offers a selection of cold beer and quick snacks with rooftop seating. Up the mountain, Roundhouse serves Himalayan and Wasatch-inspired food with generous outdoor seating on its wraparound deck. Last Chance Southwest Grill features burgers, tacos, and Southwest-inspired salads with takeout options and a sunny ski beach. In Solitude Village, enjoy mountain views while savoring Honeycomb Grill's contemporary cuisine, including its famous bison burger and bison chili, or order ahead and get your meal to go! For a quick grab-and-go meal, there's Stone Haus Pizzeria & Creamery. Thirsty Squirrel pub offers craft beers along with wine, cocktails and appetizers for your après enjoyment. For a memorable dining experience that begins with a snowshoe trek through a moonlit forest, be sure to visit The Yurt at Solitude.

SHOPPING

Promised a postcard or need a brag-worthy jacket? You've got three great shopping options at Solitude. Grab branded memorabilia and winter gear like goggles, hats and pants at Moonbeam.

FOR KIDS: THE ALL- FAMILY OUTING

Solitude Ski & Ride School offers children a safe and exciting learning experience, with skilled instructors who utilize small, age-appropriate group sizes, games and fun to help children develop confidence on the snow and improve their technique. Adult offerings include group lessons, specialty clinics and Hidden Tracks, a unique guided tour to explore the "nooks and crannies" of Solitude's world-class terrain.

A VIEW THAT WILL CHANGE HOW YOU LOOK AT THINGS.

Craving a new perspective on life? Book
your trip at brycecanyoncountry.com



Enjoy your Journey

BOX
ELDER
COUNTY

LIFE
UTAH
ELEVATED

VISITBOXELDERCOUNTY.COM



BRIGHTON

A Ski Resort for the Young and the Brash

BRIGHTON is Salt Lake's most charmingly scruffy ski hill. Unpretentious and friendly, its sprawling runs attract a young crowd and a large contingent of snowboarders. It has a well-deserved distinction of being the resort where most Salt Laker's learn to ride.

Why? A combination of lower lift-ticket

prices, free skiing for kids ages 10 and under, an appealing mix of beginner and expert terrain, wide and forgiving runs, Salt Lake's only terrain park and mellow attitude like a snowboarder with low-slung pants and bearded grin who says, "Check this out, bro."

Brighton is a family affair. Those free tickets for the kids mean generations of Utah natives have grown up bombing down Brighton's runs. The resort offers its "Ski in Three or It's Free" ski school program, which guarantees beginners will learn to ski in three sessions or the classes are, yes, free. And after ski school is out, Mom and Dad can tackle the expert terrain off of Clayton Peak while the little ones hone their skills on the greens and blues below the Majestic and Milly Express lifts. Brighton shares a boundary with Solitude and offers a pass that allows you to access both resorts. It's also home to Salt Lake's only night skiing without a resort stay—more than 200 acres of lighted runs to extend your day. New this year is a 400-foot long "Catepillar" surface lift that provides access to new beginner terrain.

Brighton's laidback vibe is most evident in its base area, which is a no-frills mix of family cabins in full-on alpine A-frame styles and its friendly watering hole, Molly Green's Tavern. Brighton keeps it simple—burger,

JUST THE FACTS

Base elevation
8,755 feet

Top elevation
10,500 feet

Skiable acres
1,050

Runs
66

Average annual snowfall
500 inches

Lifts
6

Night skiing
Yes

Solitude (too)
Guests can ski both Solitude and Brighton with an Ikon Pass, Ikon Base Pass, or Visit Salt Lake Ski Super Pass.

Freebies
Children ages 10 and under ski or ride Brighton for free with a paying adult.

Parking
Be sure to check Brighton's website for the latest parking information.

Contact
801-532-4731,
brightonresort.com

beer, nachos—on a sunny patio for your midday reprieve. Because, after all, you came here to ski, board and have fun, why make it complicated?

THE REST OF THE STORY

What's probably most impressive about Brighton is what it's not. The base area is more about function than aesthetics, and don't expect someone to take your skis or snowboard off your car here. You won't see a lot of ads touting Utah's oldest resort either. This is all by design. Brighton's focus is on snow, terrain and value.

The upside of Brighton's no-frills operation is its no-nonsense access to the goods. One hundred percent of the mountain can be accessed by a high-speed quad. It's one of the few mountains in the country where friends and families can ride together on the same lift and then peel off onto different trails—beginner, intermediate or expert—and all meet at the bottom to ride the lift together again. Most skiers and riders stick to Brighton's expertly-groomed trails, but you'll also find plenty of trees, chutes, cliffs and natural terrain parks all within bounds for those who like to white-knuckle it a bit.

Night skiing is another advantage of visiting Brighton. More than 200 acres, three lifts and the main mountain terrain park are open six nights a week from early December through March. And if you ask anyone in Salt Lake where the best place to learn to snowboard is, chances are they'll say Brighton. The Brighton Ski & Snowboard School has been teaching people to ride for 20 years. The school is also a Burton Learn to Ride Center, and they use specially designed snowboards and bindings which make learning easier.

THE VIBE

Everyone at Brighton is there because of the snow and terrain—you won't find fancy champagne or yoga classes, but you will find a huge passion for skiing and snowboarding with a local feel.

THE RUN

On the far north side of the resort, you'll

FOR KIDS: WHERE SALT LAKERS LEARN TO SKI

Because of its proximity to the city and its abundance of beginner and intermediate runs, Brighton is especially welcoming to beginners. The staff is trained to work with kids and teens—the latter group loves the terrain park. Choose from daily group lessons, individual instruction and multi-week programs. Just for Kids is designed for skiers and boarders ages 4 to 12. A learner lift pass is included. Classes are divided by ability and age groups 4 to 7 and 8 to 12. Classes are limited to six per instructor for ages 4 to 7 and eight per instructor for ages 8 to 12. Children must be 4 years old to participate in group lessons. For 3-year-olds, the resort offers private, semi private or a parent/child private lesson. For kids age 8 to 12, lessons come with a Learner Lift Pass, which accesses the Explorer and Majestic Chairlifts. brightonresort.com/multi-week-camps-and-programs/kid-programs

find the Millicent (aka Milly) and Evergreen Lifts, both accessing several fun runs which resemble one big natural terrain park. Take note as you approach the top. The double-black-diamond run below (Lone Pine) features a killer 20-to-45-foot "hero-huck." (Basically, a drop off a sheer cliff.)

EAT AND DRINK

Like the rest of the mountain, dining at Brighton is frills-free. Hearty breakfasts come standard at the base area's Alpine Rose cafeteria. Get your après ski fix at Molly Green's, where the pizza is hot and the beer is ice cold. Protip: Bring a crowd if you opt for the nachos.

BECOME A LOCAL GEAR GURU

Salt Lake—and the entire state of Utah, for that matter—is blessed with endless year-round outdoor recreation, from its world-famous skiing and snowboarding to thousands of miles of hiking and biking trails and everything in between. Because of that, the Wasatch Front and Back are home to some of the world's best outdoor equipment and apparel brands. And why not? They have the ultimate proving ground right outside their backdoor to test the gear before it hits the market. Check out these Utah-based brands:

Dynastar skis, **LOOK** bindings and **Lange** boots (dynastar.com, look-bindings.com, lange-boots.com) were seemingly purpose-built with Big and Little Cottonwood skiing in mind, producing a wide range of options to suit all levels. Dynastar's M-FREE and M-PRO lines are the skis of choice to rip the big lines as well as cruise the corduroy of Alta, Brighton, Snowbird and Solitude.

For the functional, technical and cool look while skiing in the Wasatch, Salt Lake-based **SCOTT Sports** (scott-sports.com) stylish winter apparel fits the bill, from base layers you'll use to stay warm to high-tech outerwear for all weather conditions. When the weather turns warm and trails dry out, SCOTT's lineup of mountain, gravel and road bikes offer options for every cyclist, from beginner to world champion.

Need the ideal shirt, shorts or pants for recreation or casual Friday? Then look no further than **KÜHL** (kuhl.com), born in the shadows of the Wasatch Front and designed to move and keep up with you. Another Salt Lake brand that produces quality active-wear, packs and bags is **Cotopaxi** (cotopaxi.com), whose creed is simple: "Do Good," which it does with a company culture of giving and sustainable product design.

And Salt Lake's **Coalatree** (coalatree.com) produces awesome eco-minded goods perfect for both the casual urban feel of

Utah's capital city as well as the mountain environment. Coalatree makes blankets and hammocks as well as pants, shorts and tops, including the most comfortable hoodie you'll ever wear made from, believe



it or not, a combination of coffee grounds and recycled plastic.

Looking for affordable and high-quality gear but don't want to pay top dollar? Head to **Lone Pine Gear Exchange** (lonepinegearx.com), a consignment shop for all things outdoor related.

COURTESY COTOPAXI



YOU NEVER FORGET YOUR

FIRST TRIP TO SPACE

Located in downtown Salt Lake City, Clark Planetarium offers an out-of-this-world experience that is a blast for all ages. Featuring 10,000 square feet of free interactive exhibit space, as well as the breathtaking full-dome theatre and IMAX® theatre, Clark Planetarium offers a unique experience for visitors. Also boasting one of the best science gift stores in Utah, you'll find fun and educational toys for all ages.



SALT LAKE CONNECT ATTRACTIONS PASS

SEE ONE. SEE THEM ALL.

Explore and experience Salt Lake's most popular attractions and venues with the Salt Lake Connect Attractions Pass. Here are the basics:

**SCAN THIS
QR CODE TO
GET STARTED ►**



HOW IT WORKS

1. The Connect Pass is a curated collection of 18 great attractions in Salt Lake City. Get one visit at each attraction, activated upon first use.
2. Your pass will be instantly delivered to your phone via text and email and is ready to use immediately! There are no apps to download! Your pass can be saved to your phone's home screen for easy one-tap access.
3. When visiting a venue, simply present your phone to redeem your admission.

visitsaltlake.com/connectpass

Experience some or all of the coolest things to see and do in and around Salt Lake, and then some! The Connect Pass gets you into 18 attractions at 14 venues, all at huge savings. Flexible? Absolutely! Sold in 1-day, 2-day and 3-day increments, as well as a 365-day option, you can design and plan your stay whether you're here for a couple nights, a week or plan on making a few trips to Utah's capital city this year.



Look for this icon throughout the Visitors Guide for Connect Pass attractions.



EXPLORE 18 CONNECT PASS ATTRACTIONS

One Pass. One Awesome Price.

CLARK PLANETARIUM DOME THEATER

This is the go-to destination for visitors of all ages to learn about space and science.

clarkplanetarium.org

CLARK PLANETARIUM IMAX THEATER

The theater shows educational films with breathtaking visuals on the IMAX screen.

clarkplanetarium.org

DISCOVERY GATEWAY: THE CHILDREN'S MUSEUM OF UTAH

The museum inspires children of all ages and abilities to imagine, discover, and connect with their world. discoverygateway.org

DREAMSCAPES

A world of re-imagination. Immersive artworks take you on an ethereal journey through colorful vignettes.

dreamscapesslc.org

THE LEONARDO

The "Leo" honors the spirit of this Renaissance Man. We see the world as he saw it: full of wonders to be uncovered. theleonardo.org

NATURAL HISTORY MUSEUM OF UTAH

This attraction illuminates the natural world and the place of humans within it.

nhmu.utah.edu

RED BUTTE GARDEN

Renowned for numerous plant collections, gardens, 500,000 springtime blooms, outdoor summer concerts, and educational programs, this jewel above the U of U is a must-see. redbuttegarden.org

SNOWBIRD TRAM

The tram whisks passengers along a 1.6 mile cable and up 2,900 vertical feet to the top of Hidden Peak and The Summit restaurant. snowbird.com/summer/activities/tram

THANKSGIVING POINT ASHTON GARDENS

Enjoy miles of paved walking paths through 55-acres of themed gardens and stunning landscapes. thanksgivingpoint.org

THANKSGIVING POINT BUTTERFLY BIOSPHERE

Utah's only butterfly conservatory, home to over 1,000 live butterflies from around the world. thanksgivingpoint.org

THANKSGIVING POINT MUSEUM OF ANCIENT LIFE

Housing world's largest display of mounted dinosaurs, this is a sure-fire kid pleaser. thanksgivingpoint.org

THANKSGIVING POINT MUSEUM OF NATURAL CURIOSITY

With more than 400 interactive experiences, choose a new adventure each visit. thanksgivingpoint.org

THIS IS THE PLACE HERITAGE PARK

Step into the past, ride trains, pan for gold, play old-fashioned games and meet farm animals. thisistheplace.org

TRACY AVIARY

The aviary's mission is to inspire curiosity and caring for birds and nature through education and conservation.

tracyaviary.org

UTAH MUSEUM OF CONTEMPORARY ART

The Utah Museum of Contemporary Art (UMOCA) believes in the power of the art of our time and working with artists and communities to build a better world. utahmoca.org

UTAH'S HOGLE ZOO

Hogle Zoo nurtures respect and appreciation for the natural world by providing diverse educational, recreational, and conservation opportunities. hoglezoo.org

UTAH MUSEUM OF FINE ARTS

UMFA is the region's destination museum for global visual arts. umfa.utah.edu

UTAH OLYMPIC PARK

The park hosted Bobsled, Skeleton, Luge, and Nordic Ski Jumping events during the 2002 Winter Olympics. Pass is for spring/summer ropes course. utaholympiclegacy.org



SALT LAKE CONNECT ATTRACTIONS PASS



There's always something happening in Salt Lake. And the Connect Attractions Pass is your ticket to 18 of the most popular attractions – at huge savings.

Sold in 1-day, 2-day or 3-day increments as well as a 365-day option, it can help you plan your stay around the Northern Utah area.

You'll save 60%+ on regularly priced admission to 18 attractions at 14 venues in and around Salt Lake. Plus a host of other discounts and an interactive map to get the most out of your pass.

Get all the details at visitsaltlake.com.



SALT LAKE

visitsaltlake.com

TEMPLE SQUARE

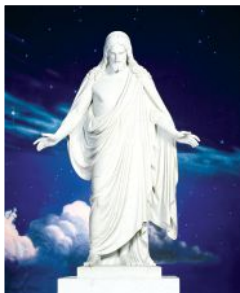
EVENTS & MORE

Temple Square is both the cartographic center of Salt Lake City and the heart of the Church of Jesus Christ of Latter-day Saints. On July 22, 1847, after being driven well beyond the U.S. boundaries for their religious beliefs, Church members arrived in what is now known as the Salt Lake Valley.

Please note that the Temple and some other buildings in Temple Square will be undergoing restoration for the next few years; some areas may be closed.

Upon the arrival of the Latter-day Saints in Utah, Church president Brigham Young famously declared, “This is the place.” The pioneers called their new state Deseret, meaning “industry.” Within four days, Young had chosen the site for the Temple. It took 40 years to complete.

Temple Square is beautifully landscaped and is the No. 1 tourist attraction in Utah. Three of the buildings on the square were built by the pioneers: the magnificent six-spired granite **Salt Lake Temple**; the acoustically perfect domed **Tabernacle**, (the original home of the Choir at Temple Square and the famous Tabernacle organ); and the **Assembly Hall** with its spires and stained glass windows. Outside the Assembly Hall is the **Seagull Monument**, a commemoration of the “Miracle of the Gulls”—a local bit of lore about a massive flock of seagulls that arrived in the valley and saved the settlers’ crops from a plague of insects. The Conference Center’s welcome center offers art and interactive exhibits and a replica of Thorvaldsen’s **Christus**. Private tours of all of Temple Square’s attractions are offered in more than 40 languages.



Thorvaldsen’s Christus (left) in the Conference Center (below) is a must on your SLC visit.



The Family History Library (35 N. West Temple, 801-240-6996, familysearch.org/family-history-library) is the largest repository of genealogical records in the world, and is free to the public. In the library, you’ll find the Discovery Experiences (for current hours, visit familysearch.org). North of Temple Square is the massive 21,000-seat **Conference Center** (50 W. North Temple, 801-240-0075, templesquare.org) with a waterfall on the south façade and a four-acre garden on the roof. The building hosts the Church’s conferences and musical performances and is large enough to hold two Boeing 747s.

TEMPLE SQUARE RENOVATION

The Salt Lake Temple renovation project recently completed the third year of its five year renovation. Most publicly accessible Temple Square buildings will stay open during the renovation—so you can still come and enjoy events, performances, tours, dining, and Christmas lights during the holiday season. For the most current information about all of the activities and sites available, including the historic Beehive House and Assembly Hall, the Church History Museum, Family History Library and the famous Tabernacle, visit templesquare.org.

AUSTEN DIAMOND PHOTOGRAPHY

THIS IS THE PLACE HERITAGE PARK

The Fun Place For Everyone!

- NEW! Pioneer Center
- Pioneer Children's Memorial
- Panning for Gold
- Pony Rides
- Horseback Trail Rides
- Artisans
- Native American Village
- Over 50 Historic Building
- Train Rides
- Irrigation Station Splash Pad
- Arts and Crafts
- Brigham's Donuts
- Delicious meal options
- Ice Cream
- ZCMI Children's Candy Shop
- The Treasure House - Geodes and Gemstones
- The "Best Little Gift Shop West of the Mississippi!"

...and more!

www.thisistheplace.org

This Is The Place Heritage Park
2601 E. Sunnyside Ave. SLC, UT 84108
801.582.1847 • www.thisistheplace.org





Family History Library

CLIMBING YOUR FAMILY TREE

The Church of Jesus Christ of Latter-day Saints is serious about preserving its genealogy records. All Family History Library record originals are kept at the Granite Records Vault in the mountains near the mouth of Little Cottonwood Canyon, but the digital information is available to everyone.

In 1894, The Church of Jesus Christ of Latter-Day Saints started gathering genealogical records to help members trace their family histories.

The Church's **Family History Library** (35 N. West Temple, 801-240-6996, familysearch.org/family-history-library) is now the largest of its kind in the world. In the library, you'll find Discovery Experiences, an interactive display that allows you to explore and learn about your family history.

Use of the Family History Library is not limited to Church members. Anyone can enter the library and use any of the resources to trace their family tree, free

of charge. More than 300 computers are available for use in the five-floor, 145,000-square-foot library. Resources here include vital records like birth and death certificates, marriage licenses, census returns, property, probate and cemetery records, among many others. The Library welcomes both casual visitors and serious researchers. For the best experience, visit with a clear objective in mind. Do you want a fun, hands-on experience learning about your family, or are you searching for missing ancestors in historical records? Guests are not required to have a free FamilySearch account, but it has benefits and can provide a more rich experience. FamilySearch allows account holders to access more digital images and records, receive record hints, collaborate with others online, and more.

There are more than 4,500 Family History Centers around the world. Find a location or sign up for a free account at familysearch.org.



THIS IS THE PLACE



Another visit-worthy Church of Jesus Christ of Latter-day Saints historical site is **This is the Place Heritage Park**. Located 6 miles from Temple Square at the mouth of Emigration Canyon, the site marks the spot where the original Latter-day Saint pioneers entered the Salt Lake Valley and their leader, Brigham Young, famously declared "This is the place." The park features restored pioneer buildings and many family friendly activities. Check the website for events and things to do. 2601 Sunnyside Ave., 801-582-1847, thisistheplace.org



USING THE LIBRARY

Before visiting the library it is important to find as much information as you can about your ancestors. Although not necessary to use the library, it is helpful to set up a free FamilySearch account before visiting at familysearch.org. FamilySearch can assist you before and after you visit the library for your dive into your family's history. At the library, ask the helpful staff and docents for a library worksheet and

be sure to bring a big flash drive to save your research.

You can't check out books, but you can make copies. The Library doesn't have its own parking lot, but you can park at nearby garages or pay for on-street parking at the blue meters (parkingslc.com).

For current hours of operation for the Library and Discovery Experiences, visit familysearch.org.



Welcome to 15 minutes north of Salt Lake.

With **UTAH'S AMUSEMENT CAPITAL** that close,
it's just a buckle-away.



DiscoverDavis.com

Scan for
more info



FAMILY FRIENDLY STUFF TO DO

Any parent will tell you: If the kids aren't happy, then nobody's happy. Make your Utah visit fun for everybody—toddlers to teens—with this Salt Lake-area list of kid-friendly things to do.

SPORTY

Let them climb the walls like monkeys at **Momentum's** indoor climbing wall (3173 E. 3300 South, Millcreek, 801-906-2132 or 220 W. 10600 South, Sandy, 801-990-6890, momentumclimbing.com).

With a seasoned bobsled pilot, experience the official 2002 Olympic Sliding Track at speeds over 60 mph and notable g-forces. **Utah Olympic Park** (3419 Olympic Parkway, Park City, 435-658-4200, utaholympiclegacy.org).

Channel some of that excessive energy into a bow at **Easton Archery Center** (575 John Glenn Rd., 801-523-5232, esdf.org).

ARTSY

Watch stories like *Pinkalicious* and *Treasure Island* come to life on the intimate, black-box-style stage at **Utah Children's Theatre** (3605 S. State St., 801-532-6000, parkertheatre.org), a theater dedicated to presenting only kid-targeted plays.

Get your family art on at the **Utah Museum of Contemporary Art** (20 S. West Temple, 801-328-4201, utahmoca.org), which mounts edgy exhibits, runs an art truck and hosts unusual art happenings.

NATURE

Open your kids' eyes to where milk really comes from, feed the ducks and take a tractor-pulled hayride at **Wheeler Farm**, a demonstration rural farm and park (6351 S. 900 East, 385-468-1755, wheelerfarm.com).

The 400 birds residing in **Tracy Aviary** don't migrate in winter. Many of them are rare or endangered. At the south end of Liberty Park, the Aviary is open year-round (589 E. 1300 South, 801-596-8500, tracyaviary.org).

AUSTEN DIAMOND PHOTOGRAPHY (RIGHT), MICHAEL KUNDE (LEFT)





Natural History
Museum of Utah

Being in a desert doesn't mean kids can't learn about the oceans. Several hundred species are always on exhibit at **Loveland Living Planet Aquarium** (12033 S. Lone Peak Pkwy., Draper, 801-355-3474, thelivingplanet.com).

PARKS

Sugar House Park may just be a park, but it feels like a destination. Depending on weather, it offers jogging, playgrounds, sledding or cross-country skiing (1330 E. 2100 South, sugarhousepark.org).

Within Jordan Park, explore the **International Peace Gardens**, featuring floral architectures representing nations around the world (1160 Dalton Ave., 801-972-7800, internationalpeacegardens.org).

KIDS' NIGHT OUT

Need some adult time? Take the kids to **The Little Gym** for a little gymnastics-specific play while you hit the town. Little Gym Parents' Survival Nights are offered on select Friday nights for kids ages 3 to 12 from 6:30 to 10 p.m. Locations in Draper, Cottonwood Heights and Salt Lake City, thelittlegym.com

MUSEUMS

Examine a dino bone or walk through a silver mine at the **Natural History Museum of Utah** (301 Wakara Way, 801-581-6927, nhmu.utah.org).

Whether your kid aspires to build a home, fly a helicopter or anchor the evening news, they can start the job early at the **Discovery Gateway Children's Museum** (444 W. 100 South, 801-456-5437, discoverygateway.org). **The Leonardo** explores the nexus of art and science (209 E. 500 South, 801-531-9800, theleonardo.org).



Loveland Living
Planet Aquarium

PHOTO COURTESY OF VISIT SALT LAKE (TOP), MICHAEL KUNDE (BOTTOM)

FREE OR SUPER CHEAP THINGS TO DO

Ride the rails within **TRAX's** free fare zone (rideuta.com) from Salt Lake Central Station to the **Main Library**. Then check out the Salt Lake City skyline from the spectacular main library's rooftop garden before going inside to

hang out in the library's huge juvenile section (210 E. 400 South, 801-524-8200, slcpl.org). Further south, **Scheels** has many low-cost family-friendly activities—a ferris wheel, mini-bowling and a shooting range. (11282 S. State St.,

Sandy, 801-948-7080, scheels.com). Visit **Sweet's candy factory's** visitor center to learn about the magic behind those chocolate orange sticks, by appointment only (3780 W. Directors Row, 801-866-1444, sweetcandy.com).

THREE OLYMPIC LEGACY VENUES

WITH UNLIMITED YEAR-ROUND FUN

UTAH
OLYMPIC
PARK



PARK CITY,
UTAH



KEARNS,
UTAH

UTAH
OLYMPIC
OVAL



SOLDIER
HOLLOW
NORDIC CENTER



MIDWAY,
UTAH



UTAHOLYMPICLEGACY.ORG



OLYMPIC LEGACY ATTRACTIONS

B. CROSBY



As the 2002 host of a successful and memorable Olympic Winter Games, Salt Lake joined an exalted club of former Olympic cities around the world. Visitors to Utah will encounter plaques and pylons that welcomed the world's athletes and are preserved as tributes to their competitive spirit. You can even ski, sled and skate at venues where Olympic medals were won.

THE UTAH OLYMPIC PARK



Likely Utah's most complete

Olympic legacy attraction, this park is home to the bobsled, luge and skeleton track; the K90 and K120 Nordic jumps; the **Alf Engen Ski Museum** and the **Eccles 2002 Olympic Museum**, with extensive photographs and a film. Take a chairlift ride to the top of the K120 Ski Jump for spectacular views of the mountains and valley. Only a few places in the world allow people to experience an Olympic bobsled track—this is one. 3419 Olympic Parkway, Park City, 435-658-4240, engenmuseum.org

THE UTAH OLYMPIC OVAL

Home to the "Fastest Ice on Earth," this huge facility may appear imposing from the outside, but inside it feels like a small



town ice rink. Skaters of all levels can glide around the Oval's two international-size ice sheets or watch the athletes train on the 400-meter skating oval. You can also take a swim or work out at the **Kearns Oquirrh Park Fitness Center** (kopfc.com) located right next to the Oval. 5624 S. Cougar Lane, Kearns, 801-966-5555, utaholympiclegacy.org

SOLDIER HOLLOW NORDIC CENTER

Just outside of Midway (an uber-cute, Euro-inspired burg on the Wasatch Back) is **Soldier Hollow Resort**. Cross-country skiing and biathlon competitions took place here in 2002. You can try out the cross-country skiing yourself, or try snowshoeing. The list of summer activities at this outdoor recreation center includes the annual Soldier Hollow Classic Sheepdog Championships. The event features the best sheepdog handlers in the world. Meanwhile, the cozy lodge hosts weddings and events. 2002 Soldier Hollow Ln., Midway, 435-654-2002, utaholympiclegacy.org/Soldier-Hollow



PHOTOS: AUSTEN DIAMOND PHOTOGRAPHY (TOP), B. CROSBY (BOTTOM)



EXPERIENCE UTAH CULTURE

Find your next event at NowPlayingUtah.com

NOW PLAYING UTAH! **LIFE UTAH ELEVATED**

PURE IMAGINATION

20% OFF MON-THURS BROADWAY SHOWS

PROMO CODE: TUA20

CHECK TUACAHN.ORG FOR SHOW UPDATES



*Newspales only. restrictions apply.

TUACAHN AMPHITHEATRE (800) 746-9882



CHARLIE AND THE CHOCOLATE FACTORY

MAY 13 - OCT 19



TARZAN

THE STAGE MUSICAL
BASED ON THE Disney FILM

MAY 20 - OCT 21



THE HUNCHBACK OF NOTRE DAME

JUL 15 - OCT 20



Beautiful
The Carole King Musical

JUN 30 - AUG 19



White Christmas
THE MUSICAL

NOV 24 - DEC 22

George S. and Dolores
Doré Eccles Theater

SHOWSTOPPERS

From grand Broadway-style productions to locally-written and produced plays, there's no shortage of theater in Salt Lake

JON BURKHOLZ



Aida at Hale Center Theatre

The **George S. and Dolores Doré Eccles Theater** (131 S. Main St., arttix.org) is located in downtown Salt Lake and features touring Broadway plays and live musical acts and events in its 2,500 seat theater. An on-site black box theater serves local theater groups.

Abravanel Hall (123 W. South Temple, saltlakecountyarts.org/venues/abravanel-hall) is a gold-gilded architectural and artistic icon, built as the home of the **Utah Symphony** (utahsymphony.org).

The **Janet Quinney Lawson Capitol Theatre** (50 W. 200 South, arttix.org) has been at the center of the Salt Lake arts community since 1913. Its legacy of exceptional performances have made this theater a treasured landmark. Home of the **Utah Opera** (utahopera.org) and **Ballet West** (balletwest.org).

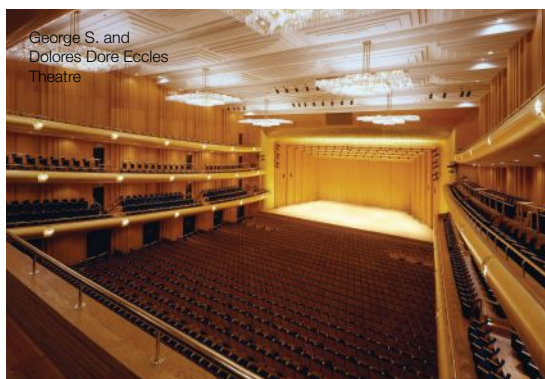
The **Rose Wagner Performing Arts Center** (138 W. Broadway, saltlakecountyarts.org/venues/the-rose/) is a three-venue arts complex, home to various performing arts organizations, such as **Plan-B Theatre Company** (138 W. 300 South, planbtheatre.org), which produces unique and socially conscious theater created by Utah playwrights.

Hale Center Theatre (9900 S. Monroe St., Sandy, hct.org) has been delivering family-friendly plays since 1985.

Pioneer Theatre Company (300 S. 1400 East, pioneertheatre.org) is the professional theatre-in-residence at the University of Utah. Each year's seven-play season includes classics, musicals and contemporary dramas and comedies.

Salt Lake Acting Company (168 W. 500 North, saltlakeactingcompany.org), or SLAC, has the unique distinction of playing in a former church. SLAC produces world-premiere plays by both local and national playwrights.

PHOTOS: DENNIS MECHAM (BOTTOM), AUSTIN DIAMOND PHOTOGRAPHY (TOP)



George S. and Dolores Doré Eccles Theatre

**CLASSICAL, OPERA, POPS, FILMS
AND FAMILY PERFORMANCES**

UTAH SYMPHONY | UTAH OPERA

“LISTEN LOCAL” TO WORD-CLASS MUSICIANS

**TICKETS START AS LOW AS \$21
GET YOURS TODAY AT USUO.ORG
OR 801-533-NOTE (6683)**

UTAH SYMPHONY



UTAH SPORTS HALL OF FAME MUSEUM



FREE ADMISSION

OPEN MONDAY-SATURDAY, 11AM-7PM



Visit us at: 99 W So. Temple, Suite 102, Salt Lake City

*City Creek Mall Level, North of Nordstrom
2 hours free parking at City Creek Mall*

UtahSportsHallofFame.org



Art | Café | Store

VISIT THE

UMFA

UTAH MUSEUM OF FINE ARTS

umfa.utah.edu | **U**

BECOME A LOCAL FAN GAME TIME

Like most American cities, sports are a vital part of life in Salt Lake. Rare is a weekend when the pros (or semi-pros) aren't tossing or kicking the ball around a court or field. And, because Salt Lake has a much smaller population, tickets are pretty easy to come by.

REAL SALT LAKE

Real Salt Lake emerged from obscurity in November 2009 when they became the Major League Soccer champions. RSL was the 2013 MLS Western Conference Champion, and star players compete on the US National Team. RSL plays at Rio Tinto Stadium in Sandy. The season runs March–October with playoffs in November. Women’s pro soccer will return to Utah in 2024 with the Utah Royals FC. 9256 S. State St., 801-727-2700, rsl.com



REAL MONARCHS

The Real Monarchs soccer club, a second-division professional men’s team affiliated with Real Salt Lake, is a member of the 24-club United Soccer League. The team’s home field is Rio Tinto Stadium. 9256 S. State St., Sandy, rsl.com/monarchs

A affiliate of the Los Angeles Angels. The Bees’ home games are April to mid-September at the casual, family-friendly Smith’s Ballpark. Take a seat or bring a blanket and spread out on the huge lawn on the field’s east and south sides. 77 W. 1300 South, 801-325-2273, slbees.com

and the proud home to the University of Utah’s various sporting teams. The University of Utah joined the Pac-12 conference in 2011, boosting the town to Code Red. 451 S. 1400 East, 801-581-5445, stadium.utah.edu, utahutes.com

THE BEES

Nothing says summer like America’s pastime. The Salt Lake Bees are the top Triple-

THE UTES

Salt Lake City is really at its heart just a big college town

UTAH JAZZ

Though residents are split on their allegiance to college-level sports teams, one thing is for sure: everybody loves the Jazz. The NBA team plays in the heart of downtown at the Delta Center and has made the playoffs multiple times. December through May. 301 W. South Temple, nba.com/jazz

THE GRIZZLIES

Get close to the ice and all the action at a minor league hockey game. The Utah Grizzlies, a minor league affiliate of the Colorado Avalanche, call the Maverik Center home. Season runs October–April. 3200 Decker Lake Dr., West Valley City, utahgrizzlies.com



Tailgate at Rio Tinto Stadium

THE UTAH STARS

The Utah Stars are a member of the NBA Gatorade League, or NBA G League, which is the NBA's official minor league, preparing players, coaches, officials, trainers and front office staff for the NBA while acting as the league's research and development laboratory. The Stars play at Bruin Arena, which is located on Salt Lake Community College's Taylorsville Campus. 4600 S. Redwood Rd., Taylorsville, saltlakecity.gleague.nba.com

THE UTAH WARRIORS

Utah's professional rugby team, the Utah Warriors played its first season in 2018. Fast, rough and tough, the Warriors host game clinics two hours before each home match at Zions Bank Stadium. 14787 S. Academy Parkway, Herriman, warriorsrugby.com

GET IN THE GAME

It's true that Salt Lakers love and support their professional and collegiate sports teams, but we are serious about recreational sports as



Salt Lake
Regional Athletic
Complex

well. Utah is home to a thriving rec sports community. While we have a wide array of facilities for traditional team sports like basketball, soccer and volleyball, our equestrian, winter sport, lacrosse and martial arts sports scenes are also flourishing across all age groups. From the Larry H. Miller Softball Complex in Millcreek to the Valley Regional Softball Complex in the southwest part of the valley to the Easton Archery Center by the airport, if there's a sport, we pretty much have it covered. Fun Fact: 45 million children ages 6 through 16 currently participate in youth sports. One of Utah State's surveys conducted last year

found that the average family spends \$2,292 per year on sports!

VENUES

If you're looking to get your sports groove on, check out some of the local sports venues below.

PLACES TO PLAY

- Easton Archery Center, eastonsaltlakearcherycenter.org
- Salt Lake Regional Athletic Complex, slc.gov/parks/regional-athletic-complex
- Salt Lake City Sports Complex, slco.org/sports-complex/ [Acord Ice Center slco.org/acord-ice/](http://AcordIceCenter.slco.org/acord-ice/)
- Centennial Park, wvc.ut.gov/Facilities/Facility/Details/Centennial-Park-9



Salt Lake
City Sports
Complex



TAKE THE TOUR

Discover murals as unique as Utah

Visit Salt Lake's West of Conventional Mural Tour was created to engage our talented local artist community in a meaningful way. These murals represent one of the largest county-wide art installations to date. The Utah Arts Alliance curated the selection of artists to focus on diverse voices and perspectives, unique styles and designs. Each mural represents a unique facet of Salt Lake's open-minded, diverse regions. You can also have some fun with the interactive Salt Lake "West of Conventional" Mural Tour Pass opportunity. The Tour is free to experience through a mobile link that's delivered to you via text or email and where you can win prizes while enjoying these beautiful,

inspiring murals.

Users can also get started by scanning a QR code located on any of the existing murals. Simply check in on the Mural Tour Pass. When you've visited 6 of the 10 murals, you can claim your West of Conventional branded t-shirt at the Visitor Information Center at 90 South West Temple in Salt Lake, located inside the Salt Palace Convention Center. visitsaltlake.com/things-to-do/tours-experiences/mural-tour

In addition to Visit Salt Lake's mural tour, there are many other murals to enjoy around the city.

South Salt Lake Mural Fest curates the largest collection of street art in Utah,

PHOTOS COURTESY VISIT SALT LAKE



featuring artists from Utah and across the country. Each year, this open-air gallery, located in a funky, post-industrial neighborhood, grows with new murals. themuralfest.com

Midvale Main Street Mural Festival floods Main Street in hundreds of gallons of paint, assisting the historic area's transformation into an arts, culture, and food district where people can gather, socialize, and enjoy the vibrant culture that Midvale has to offer. engagemidvale.com/MMSMuralFestival



LOCAL RENOWN ARTISTS INCLUDE:

- Shae Peterson
- Josh Scheuerman
- Jimmi Toro
- Chris Peterson
- Miriam Gutierrez
- Matt Monsoon
- Jorge Arellano
- Bill Louis
- Gerry Swanson
- Traci O'Very Covey



BEST SERENE ESCAPES



If being constantly on the go during your visit makes you yearn for a brief respite from that next meeting or activity with the kids, we have some great options for you. Even though they are all close to downtown Salt Lake City, you will feel like you are miles away from it all!



RED BUTTE GARDEN

As the largest botanical garden in the Intermountain West, Red Butte is open year-round to the public. Over 100 acres of display gardens, natural trails and expansive views await your perusal. redbuttegarden.org

INTERNATIONAL PEACE GARDENS

The International Peace Gardens, located on the bank of the Jordan River in Salt Lake City, afford a quiet walk through floral architecture, displays and sculpture representing cultures worldwide. internationalpeacegardens.org

SALT LAKE CITY DOWNTOWN PUBLIC LIBRARY

Salt Lake City's Main Library is an architectural masterpiece and place to spend hours wandering the stacks with a cup of coffee or perusing the art. This striking 240,000 square-foot structure houses more than 500,000 books and other materials. slcpl.org

GILGAL GARDENS

An offbeat garden experience described as a "visionary art environment," Gilgal contains 12 original sculptures and over 70 stones engraved with scriptures, poems and literary texts. gilgalgarden.org

CITY CREEK CANYON

City Creek Canyon Trail is a moderate 6.5 mile heavily trafficked out-and-back trail located near Salt Lake City that features a river and a number of activity options, enjoyed year-round by locals.

MEMORY GROVE

This historic park in Salt Lake City's Capitol Hill neighborhood features peaceful walking trails and neo-classical, marble architecture.

FAULTLINE GARDENS PARK

In Salt Lake's Central City neighborhood, discover the park's hidden, tree-lined cove while kids entertain themselves on the shady playground.

THE LIVING ROOM LOOKOUT TRAIL

This trailhead is near the Natural History Museum of Utah. The 2.3-mile out-and-back trail ends in a vista of stacked rocks reminiscent of living room furniture. *Check out Hiking & Biking on VisitSaltLake.com.*

RED BUTTE GARDEN **R_x**

Your prescription for...



connecting with nature in the city.

Immerse yourself in nature. Just minutes away from downtown, the Garden offers 21 acres of themed gardens, 5 miles of hiking trails, and spectacular views.



REDBUTTEGARDEN.ORG



HAPPY TRAILS

You don't know Utah until you've
hiked or biked in its canyons.





TRAIL DIFFICULTY LEVEL

● Beginner ■ Intermediate ◆ Advanced

Before riding any trail, check with a local bike shop about restrictions. Some trails are accessible by bike only on even days.

CITY CREEK CANYON ■

City Creek runs through the heart of the city but City Creek Canyon trailhead is minutes from downtown. The canyon is a truly wild place—you're likely to see wild turkeys, deer, elk and maybe even a mountain lion. The 5.9-mile out-and-back, paved trail follows the creek up to a water treatment plant. **How to get there:** Park on the east side of the Capitol; from there, follow the path down to Memory Grove and walk north until you get to the trailhead. **Après-hike:** A craft cocktail on the westside at **Water Witch** (163 W. 900 South, SLC, 801-462-0967, waterwitchbar.com).

BONNEVILLE SHORELINE TRAIL ■

More than 40 miles of trail in Salt Lake follow the ancient shoreline of the lake that once covered much of northern Utah. Most trail sections are easy and offer spectacular views of the valley and interaction with wildlife ranging from mule deer to rattlesnakes to cyclists. **How to get there:** The trail has access points along the East Bench (bonnevilleshorelinetrail.org). A convenient entrance is at the east end of the This Is the Place Monument parking lot. **Après-hike:** A glass of a featured wine or spirit at BTG. (404 S. West Temple, 801-359-2814, btgwinebar.com)



City Creek Canyon

Bonneville Shoreline Trail



ALBION BASIN ●

In season (July-August), you'll experience four miles of retina blowing wildflowers. **How to get there:** Drive up Little Cottonwood Canyon past Alta, and up to Albion Basin Campground. The trail begins from the west side of the campground. If you need more beauty and exercise, keep on a mile to Cecret Lake (pronounced like secret, let the kids figure out the spelling).

Après-hike: Relax over a libation at the **Shallow Shaft**, which has one of Utah's best wine lists. (Alta, 801-742-2177, shallowshaft.com)

DONUT FALLS ■

After less than two uphill miles, this hike arrives at a waterfall pouring out of a hole in the granite (the "donut").

How to get there: Drive 10 miles up Big Cottonwood Canyon to the Mill D trailhead. Start the hike near Mill D South Fork Road just past the Jordan Pines rest and picnic area. **Après-hike:** A pint of Chasing-Tail Ale at **Porcupine Pub**. (3698 E. Fort Union Blvd., 801-942-5555, porcupinepub.com)

WILLOW HEIGHTS ●

This short but very sweet hike in Big Cottonwood Canyon follows a creek through aspens to a beaver pond. **How to get there:** Drive up Big Cottonwood and continue half a mile past Silver Fork Lodge. Look for a stone trail marker on your left. **Après-hike:** Get a milkshake at **Solitude's Stone Haus Pizzeria and Creamery**. (801-536-5767, solitudemountain.com)



SILVER LAKE, TWIN LAKES AND LAKE SOLITUDE ■

The child-friendly Silver Lake Trail follows a boardwalk around a crystal-clear alpine lake dotted with markers explaining the wildlife and geology. More difficult trails on the far side lead to Twin Lakes and Lake Solitude. Keep an eye peeled for cute, whistling pikas and even moose.

How to get there: Drive all the way up Big Cottonwood Canyon and look for the Nordic Center on your right, near the entrance to Brighton ski resort.

Après-hike: Commune with the hummingbirds on the deck of **Silver Fork Lodge** and sip one of the local beers on tap. (11332 E. Big Cottonwood Canyon, 888-649-9551, silverforklodge.com)

SNOWBIRD BARRIER-FREE TRAIL ●

The wheel-chair-accessible trail winds through meadows and aspens to a lookout that provides views of Little Cottonwood and the Salt Lake Valley.

How to get there: Park at the Cliff Lodge at Snowbird Ski Resort. The trail begins at the bridge near the Snowbird Center.

Après-hike: Enjoy a cocktail at **Seventy One** in the Cliff Lodge. (801-933-2025, snowbird.com)

Hiking Tips

Always take plenty of water—Utah air is extremely dry and even if you're not perspiring, you're losing water. Generally, hiking is best from April—October, but it's wise to check what the weather is at your destination and bring layers.



Snowbird Barrier Free Trail

THE MIGHTY 5

VISIT UTAH'S BREATHTAKING NATIONAL PARKS

Utah's National Parks—Bryce Canyon, Arches, Capitol Reef, Canyonlands and Zion—are spectacular and accessible from Salt Lake. Experience hiking, cycling, jaw-dropping scenery, ancient rock art and camping in the best of 'America's Best Idea.'

ZION NATIONAL PARK

(5-hour drive)

From the top of the towering West Temple plateau to the banks of the Virgin River, the red and white sandstone cliffs of Zion National Park (nps.gov/zion, 435-772-3256) provide sanctuary to life found there. Whether gazing up or looking down, the quiet grandeur of Zion is rejuvenating. Visitors can traverse the high country like desert bighorn sheep, ascend cliffs like peregrine falcons or browse the valley floor like mule deer. In winter, the shuttle buses are gone with the crowds and the main canyon, along with Kolob Canyon to the west and Zion's east side, are all open to traffic. Several sites remain open in Watch-

man campground (recreation.gov, 877-444-6777) or you can stay at historic Zion Lodge (zionlodge.com, 435-772-7700).

Top Attractions

Angels Landing Hike: A strenuous and somewhat perilous hike to a perch above the birds.

The Narrows: Slosh, in appropriate footwear, along the Virgin River between sheer cliffs of red rock.

BRYCE CANYON NATIONAL PARK

(5-hour drive)

The distinct world of Bryce Canyon National Park (nps.gov/brca, 435-834-5322) features unique hoodoos and natural rock amphitheaters. Vantage points are accessible by car or foot, ensuring views of stunning sunrises and sunsets. The glowing red color competes with the winter ice and snow that sculpted the rock into the unworldly shapes. Mountain mixes with desert, keeping nights crisp at this high-elevation park. Pitch a tent or park your RV in Sunset Campground (recreation.gov, 877-444-6777) or stay at cozy Ruby's Inn (26 S. Main St., Bryce Canyon City, UT 84764, rubysinn.com, 866-866-6616).

Top Attractions

Yovimpa Point Overlook: A panoramic vista at 9,000 feet.



Capitol Reef National Park



Arches National Park

Experience the unearthly hoodoos and spires along the Mossy Cave Trail that ends with a lichen and moss-covered grotto.

ARCHES NATIONAL PARK (4-hour drive)

Arches National Park (nps.gov/arch, 435-719-2299) is a visual delight that boasts the greatest density of natural arches in the world. Sweeping vistas of delicate arches, fins and spires team up with the fragile soil to give the park its unique appearance. The elegance of Arches can be explored at Devils Garden, Balanced Rock and Utah's iconic Delicate Arch. Arrange tours for the Fiery Furnace at the visitor center. Book a campground (recreation.gov, 877-444-6777) or stay just minutes away in Moab (discovermoab.com, 435-259-8825). The park now has a timed-entry system so check the website before you go.

Top Attractions

Delicate Arch Hike: It's 2.5 miles to Utah's most famous arch. (Yes, the one on the license plates.)

Fiery Furnace Tour: You'll need a good guide and some endurance to see this labyrinth.

CANYONLANDS NATIONAL PARK (4-hour drive)

Canyonlands National Park (nps.gov/cany, 435-719-2313) is primitive and elemental with natural puzzles of canyons, cliffs and mesas

divided by the rushing Colorado and Green Rivers. Explore the maze-like landscapes for a mosaic of color, form and curve.

Petroglyphs show evidence of past human civilizations. The Island in the Sky District provides a bird's eye-view of the canyon labyrinth, while the Needles District takes you into its' depths. Snag a first-come, first-served campsite in either district or return to civilization in Moab (discovermoab.com, 435-259-8825) or Monticello (monticelloutah.org, 435-587-2271).

Top Attractions:

Mesa Arch Hike: A quick 1/4-mile walk to an iconic arch.

Dead Horse Point: This nearby state park offers yurts and stunning sunsets, sunrises and star-filled nights (stateparks.utah.gov).

CAPITOL REEF NATIONAL PARK (4-hour drive)

Capitol Reef (nps.gov/care, 435-425-3791), with the gorges and wrinkled bulges of the Waterpocket Fold, is the loneliest and perhaps most stunning of the Mighty 5. Torrey's Broken Spur Inn (435-425-3775) is one of several options for lodging. This family-run lodge offers Zane Grey novels and a hearty western breakfast.

Top Attractions:

Hickman Bridge and Grand Wash: This is an easy stroll to view Anasazi petroglyphs. Cathedral Valley gives a hint of the massive geologic forces that shaped the park and lent the park its name.



HEALTH & WELLNESS

Though the greater Salt Lake area is blessed with endless outdoor recreation such as hiking, biking and skiing, there are other ways to keep healthy during your time in Salt Lake. If you're short on time or looking to keep your at-home routine intact, know there's an abundance of gyms, yoga studios, CrossFit—you name it, Salt Lake has it. And, of course, there are healthy food options as well.

Salt Lake Power Yoga (SLPY, saltlake-poweryoga.com) is local, original and hot, offering dynamic, heated yoga classes focusing on balanced movement, strength and breathing. SLPY offers a downtown studio as well as classes wherever you are via its on-demand and livestream classes.

Salt Lake is home to USA Climbing, and you're likely to see some of the world's best scaling the granite walls of Little Cottonwood Canyon and in any number of climbing gyms such as **Momentum Climbing Gym** (momentum-climbing.com). The epicenter of Salt Lake's indoor climbing culture, Momentum has gyms in Millcreek and Sandy, offering a combined 60,000 square feet of indoor climbing terrain.

Brickwall CrossFit (brickwallcrossfit.com) simply states, "If it doesn't challenge you,

it doesn't change you." The trainers at Brickwall believe in inspiration through perspiration.

Conveniently located in downtown Salt Lake City in City Creek Shopping Center, **The Gym at City Creek** (thegymatcitycreek.com) offers an excellent gym experience in a spacious environment with everything you would want in a gym: cardio, weights, fitness classes, personal trainers and more. Regardless of your workout routine, The Gym has it and will "keep you honest" while away from home.

It's often difficult to keep a healthy diet while traveling. For travelers looking for healthy choices to prepare in the comfort of a hotel room, **Whole Foods Market** (wholefoodsmarket.com)—with three Salt Lake valley locations—offers the finest natural and organic foods available.



Utah Museum of Contemporary Art

Frank Poor, *House—Milton, GA* 2021,
Basswood and digital print on Baltic
birch plywood, 90 × 72 × 42 in

UMOCA

20 S W Temple
Salt Lake City, UT

utahmoca.org
[@utahmoca](https://www.instagram.com/utahmoca)

Open Wed–Sat
11am–6pm / 9pm ^(Fri)



SHOP SALT LAKE

Salt Lake's cultural blend guarantees shopping opportunities for students, hipsters, families, athletes and teens. Clothes, antiques, books, outdoor gear, locally made cheese, chocolate and whiskey are highlights of shopping in Salt Lake. You just have to know where to look.

CITY CREEK CENTER

With more than 100 stores like Macy's, Michael Kors, Nordstrom and Tiffany & Co., it's a shopper's paradise. For the kids, hit the Red Balloon Toy Store. The area also has excellent restaurants, including Cheesecake Factory, Brio Tuscan Grille Blue Lemon and Capital Grille'. Across the street from Brio down Regent Street you'll find SLC newbie Honest Eatery and the hot, hot chicken spot Pretty Bird and Maize. The City Creek area also features a grocery store, Harmons, offering everything from the

basics to gourmet takeout and fresh-baked breads. Steps away from Harmons, on State Street, in the gorgeously restored library, is Utah's premier jeweler, O.C. Tanner. 50 S. Main St., 801-521-2012, shopcitycreekcenter.com

9TH AND 9TH

An eclectic community of shops and restaurants in the middle of a quaint residential area, 9th and 9th is hip and urban. You'll find all the literary classics for wee ones at The Children's Hour, along with dolls and stuffed animals,

shoes and clothes for babies, children and women. Load up on funny, absurd and downright risqué cards and gifts at Cahoots. Hip & Humble is a gift-giver's paradise. Salt and Honey is a treasure trove of locally made treasures. 900 E. at 900 South, 9thand9th.com

THE GATEWAY

Utah's entertainment center, The Gateway's wide outside walkways are home to unusual stores like beauty boutique Apothica and Urban Arts Gallery. Pick up the makings of a meal or a prepared to-go meal at boutique local grocer, The Store. But Gateway is mainly about entertainment—local bars like Seabird and adult game spots like Flanker. Catch a show at The Depot. Clark Planetarium features 10,000 square feet of stunning imagery in the ATK 3D IMAX Theatre or Hansen Dome Theatre, and the Discovery Gateway Children's Museum offers interactive educational exhibits for the whole



ADAM BARKER



City Creek Center

PHOTO CREDIT @HEARTMYBACKPACK



family. The historic Union Pacific Depot, built in 1908, serves as the gateway to The Gateway (and will be the future home of the Asher Adams Hotel). *18 N. Rio Grande St., 801-456-0000, shopthegateway.com*

EAST BROADWAY

East Broadway offers hip, locally owned shops. At Jitterbug Antiques, Toys & Collectibles you can unearth a classic Lincoln Logs set, model cars and Pez dispensers. Mid-century modern furniture fills The Green Ant. IconoCLAD is an upbeat consignment shop offering used clothing and accessories in a variety of styles for men and women. Sip a cup of coffee from The People's Coffee. Fuel yourself with a pastry at Gourmandise Bakery. Then hit Bar X, Copper Common or a history buff's favorite, Ken Sanders Rare Books. *268 S. 200 East, 801-521-3819, kensandersbooks.com*

SUGAR HOUSE

It's the small shops that give quirky Sugar House (named for the sugar beet) character—spots like Sugar House Coffee Co. with

its dependably listenable live music. Home Again features a shifting selection of consignment décor. Sundance Catalog Outlet offers deep discounts on trendy western clothing and jewelry. Hungry? Stop at Kimi's Chop & Oyster House for steak and oysters. *1100 East and 2100 South*

TROLLEY SQUARE

Salt Lake's old trolley barns were remodeled as a shopping mall years ago, and a major revamp brought in Whole Foods market and Weller Book Works, Salt Lake's iconic book store since 1929. You'll find high-end mall mainstays like Pottery Barn and Williams-Sonoma and unique local boutiques like stationery store Tabula Rasa and gift shop Olive and Cocoa and the high-fashion eyewear outlet, The Spectacle. Trolley also houses quirky gift shop, Cabin Fever (a great spot for self-mocking Salt Lake gifts like Temple Square shot glasses) and brew pub Desert Edge at the Pub. *Between 500 and 600 South at 700 East, 801-521-9877, trolleysquare.com*

SLC SHOPPING CENTRAL

Foothill Village. Shop it end to end: Start at New Orientation which features tabletop decor from European and American creators; down the walk, find toys that teach from Tutoring Toy, and pick up booties at Babinski's Baby. Lace up at Salt Lake Running Company. Bloomingsales offers fresh flowers and unusual trinkets. 1400 S. Foothill Dr., 801-487-6670, foothillvillage.com

FASHION PLACE

Dillard's anchors the center of the mall with Nordstrom, the city's largest high fashion emporium. But there's still room for small yet high-style boutiques like Bohme, big-name shops like H&M and Crate & Barrel, Sephora, Urban Outfitters and J. Crew. Don't miss eateries like Corner Bakery, Taqueria 27 and Red Rock Brewery. 6191 S. State St., Murray, 801-262-9448, fashionplace.com

Restored cabins, vintage buildings and a duck pond nestled around historic Gardner Mill make a charming shopping and dining experience. The old flour mill, on the National Historic Register, houses locally-owned Archibald's Restaurant and CF Home Furniture & Design.

1100 W. 7800 South, West Jordan, 801-566-8903, gardnervillage.com

HOLLADAY VILLAGE PLAZA

Anchored by specialty grocer, Harmons Holladay Market, here you can also pick up a variety of high quality, grab-and-go snacks or sandwiches from Caputo's Market & Deli. Dine-in at Mint Tapas & Sushi and Layla Mediterranean Grill And Mezze, pop in for coffee at 3 Cups, or pick up a special treat at Leslie's French Pastries or Sweetaly Gelato. 2300 E. Murray Holladay Road, Holladay

GARDNER VILLAGE



Sugar House

sundance

— CATALOG OUTLET STORE —



APPAREL | JEWELRY | ACCESSORIES | FOOTWEAR | HOME DÉCOR | FURNITURE

2201 South Highland Drive, Salt Lake City UT 801.487.3400
10am–8pm Monday through Saturday, 12pm–5pm Sunday

Selection Varies and is Limited



O.C. Tanner Jewelers

UNIQUELY SALT LAKE TOP SHOPS

Visitors to SLC will find shops that are defined by their owners' personalities and passions.

LANNY BARNARD GALLERY

An outpost of the Park City favorite, the Lanny Barnard Gallery is a curated collection that features gorgeous artisan and antique jewelry and accessories. In historic Trolley Square. 602 E. 500 South, 801-364-4482. lannybarnardgalleryslc.com

SIGNED & NUMBERED

Local artist Leia Bell started out designing striking prints and posters for rock bands—Signed & Numbered features her work as well as the work of other, mostly local, artists. The gallery also offers custom framing, using water-based finishes on “cutoffs” from lumber stores or reclaimed wood. 2320 S. West Temple, 801-596-2093. signedandnumberedshop.com

THE KING'S ENGLISH

Over 35 years ago, bibliophiles Betsy Burton, Ann Berman and Barbara Hoagland created a space where books are discussed and cherished and authors honored. In the digital age, King's English offers room after rambling room of print on paper—not just bestsellers but also autographed books, books by local authors and a complete children's section. This is an old-fashioned bookstore that encourages browsing. 1511 S. 1500 East, 801-484-9100, kingsenglish.com

SUNDANCE CATALOG OUTLET STORE

Sundance is synonymous with Utah, thanks to the Kid himself, Robert Redford.



Subtly western-style clothes, furnishings and artisanal jewelry that have made the Sundance Catalog a fashion icon are available here at bargain prices. 2201 Highland Dr., 801-487-3400, sundancecatalog.com

KEN SANDERS RARE BOOKS

The real treasure here is Ken himself, a walking—and talking—compendium of knowledge, trivia, myth and history about books in general and his native state in particular. You may have seen Utah's bearded sage on PBS's "Antiques Roadshow." His

store contains a mesmerizing collection of historic maps and prints, classic and rare books and vintage postcards. 268 S. 200 East, 801-521-3819, kensandersbooks.com

THE CHILDREN'S HOUR

From the name, you might expect charming melange of exquisite children's clothes, books and toys, but the curated collection of women's fashion (including great shoes), jewelry, accessories and a selection of unusual books and gifts may come as a surprise. 898 S. 900 East, 801-359-4150, childrenshourbookstore.com

O.C. TANNER JEWELERS

The architectural gem that houses Obert Clark Tanner's flagship store was originally the city library, built in 1905. The company renovated the building, putting \$24 million into a home for the presentation of sparkling jewels (think Roberto Coin and Penny Preville) and fine watches. 15 S. State St., 801-532-3222, octannerjewelers.com

TABULA RASA

A wonderland for those who love old-fashioned communication—gorgeous paper, stationery, luxurious pens and other treasures. 330 Trolley Square, 801-575-5043, tabularasastationers.com



(TOP) AUSTIN DIAMOND PHOTOGRAPHY; (BOTTOM) PHOTO COURTESY OF VISIT SALT LAKE



The Green Ant

THE SPECTACLE AND THE MACHINE AGE

This eyeglass shop has made glasses for spectacle king Elton John for the film *Bladerunner*. The Machine Age, downstairs from his eyeglass shop, creates steampunk lamps, rayguns and other objects from found materials. *The Spectacle: Trolley Square, 801-359-2020. thespectacle.com; Machine Age, 602 S. 700 East, 801-521-9878*

ANTHONY'S FINE ART & ANTIQUES

The imposing columns of the old mansion indicate the extent of the riches inside: At Anthony's you'll wander through room after room of fine art and sculpture, European museum-quality antique furniture, light fixtures and architectural pieces, as well as special exhibits. 401 E. 200 South, 801-328-2231. anthonyfineart.com

MODERN WEST

A gorgeous gallery showcasing the best in modern Western art—from fine-art paintings, crafts and sculpture by local and Indian artists, to traditional arts. 412 S. 700 West, 801-355-3383, modernwestfineart.com

GOT BEAUTY

This locally owned salon has a full display of high-end cosmetics and hair products, plus great gifts—leopard flasks, pink martini shakers, yoga mats, you name it. 904 E. 2100 South, 801-474-2090. gotbeauty.com

THE GREEN ANT

Mid-century modern chairs, lamps, sofas, art, accessories and oddments, all at affordable prices from a friendly knowledgeable staff—need we say more? 179 E. Broadway, 801-595-1818. thegreenant.com

THE MAKERS

Visit the Salt & Honey Makers Market—
a one-of-a-kind store for visitors and locals alike

It's no secret that Salt Lake has a bustling arts and culture scene, and our local artisan community is no exception. Located inside of the Salt Palace's Visitor Information Center, you'll find The Visit Salt Lake Salt and Honey Makers Market, where products from more than 85 local creators are showcased in a thoughtfully curated collection of made-in-Utah finds for locals, visitors, and convention attendees. Think of it as your personal Salt Lake Etsy store. When you purchase from Salt and Honey, you are taking the heart and soul of Salt Lake home with you.

This innovative Utah arts experience showcases the incredible talent we have here in Salt Lake and the state of Utah. Each artisan tells a story through their handcrafted products. "Gotta have it" items from local artisans, designers and makers include products ranging from jewelry, apparel, delicious culinary creations and beauty products to Utah themed gifts like hand-drawn post cards, magnets and wheel thrown mugs.

And while you're shopping, you can learn more about the best restaurants and bars, hiking and ski trails and more. Our Visit Salt Lake experts are experts on all things Salt Lake City, County and beyond and are always on hand to help with maps, information, and insider tips on our modern, vibrant destination.

Whether it's honey harvested by a local beekeeper, clay earrings molded by a local "mompreneur" or scented candles poured in a home studio, you are sure to find a one-of-a-kind treasure on every visit to this unique makers market. 90 S. W. Temple, SLC, 801-534-4900, visit-salt-lake.myshopify.com.





WHERE MOUNTAIN MEETS MODERN

Where Communities #ComeTogether

Over 100 Shops, Dining & Entertainment!

Discover something for everyone.



THE SHOPS AT
SOUTH
TOWN

Shopsouthtown.com

[Twitter](#) [Instagram](#) [Facebook](#) @ShopSouthTown

AMERICA'S CRAFT CHOCOLATE CAPITOL

Utah produces some of the world's finest bean-to-bar chocolate.

Utah is known for The Greatest Snow on Earth™. What is not as well known is that Utah has some of the greatest bean-to-bar chocolate on earth. The best way to get your hands on samples from all of Utah's craft chocolate makers is to stop by Caputo's Market & Deli (314 W. Broadway, caputos.com). Caputo's has the country's largest stock of craft chocolate and teaches classes on fine chocolates. Here are a few of Utah's best chocolatiers:

THE CHOCOLATE CONSPIRACY

Unlike most craft chocolate makers who are focused on taste and pleasure, the approach taken by The Chocolate Conspiracy is rooted in the fact that raw chocolate is one of the most nutrient dense foods on the planet. The Chocolate Conspiracy uses raw (not roasted) cacao beans, sweetened with honey. eatchocolateconspiracy.com

HATCH FAMILY CHOCOLATES

Four generations of the Hatch family have learned the techniques of hand dipping chocolates and



making quality candies, and that family tradition is the backbone of their business. hatchfamilychocolates.com

AMANO ARTISAN CHOCOLATE

Art Pollard, the founder and head chocolate maker at Amano Artisan Chocolate, doesn't believe in compromise when it comes to his chocolate. And the ethos has paid off. Amano is the most highly awarded craft chocolate maker in America. Period. amanochocolate.com

MILLCREEK CACAO ROASTERS

You probably won't be surprised to learn that Millcreek Cacao Roasters sources heirloom beans directly from farmers around the world. What is surprising to discover, Millcreek has

developed a process to infuse the bars with additional flavors without diluting the cacao: aroma-infusion. millcreekcacao.com

RITUAL CHOCOLATE

Ritual makes some of the best two-ingredient craft chocolate around, with beautifully packaged single-origin bars. ritualchocolate.com

SOLSTICE CHOCOLATE

Solstice Chocolate makes you feel good before you even taste it. It's made in a zero waste, 100% solar-powered facility and the packaging is 100% recyclable and re-sealable. All that aside, the chocolate stands on its own as some of the best. Solstice Chocolate specializes in single-origin bars. solsticechocolate.com

**ONE-OF-A-KIND
BOUTIQUE
SUPPORTING
WOMEN IN
BUSINESS**



(women owned small business)
W.O.S.B
collective

FASHION, ACCESSORIES, JEWELRY, HATS,
CASUAL WEAR, SWIMWEAR, ACTIVEWEAR,
SHOES, LOCAL ART, HANDCRAFTS, AND MORE

136 S. RIO GRANDE ST. SLC, UTAH





ENJOY THE VARIETY AT SALT LAKE'S FOOD HALLS

DOWNTOWN FARMER'S MARKET

Utah is fast becoming an epicurean center with a growing community of local cheesemakers, bakers, chocolatiers, butchers and salumi makers, plus renowned gourmet retailers. Take home an edible Salt Lake souvenir. Many shops also sell their goods at the Downtown Farmers Market.

slcfarmersmarket.org

HALL PASS

Located at the Gateway in Downtown, Hall Pass is 11,000 sq. feet of stylish, communal dining, with a focus on chef-driven food. 153 S. Rio Grande Street, SLC, hallpassslc.com

WOODBINE FOOD HALL

A bright, airy space in the Granary with lifted ceilings, skylights and local vendors serving everything from ramen to pizza and (bonus) a rooftop bar. 545 W. 700 South, SLC, woodbineslc.com

THE LOCAL MARKET & BAR

Aiming to put the neighborhood back in the area around the beautiful SLC Library,

Local Market & Bar's eight vendors were hand selected by NYC Chef Akhtar Nawabhas. The centerpiece is the "Good Bar" area at the entrance but the real gem is in the back—the excellent sliders from Pop's Burgers. 310 E. 400 South, SLC, thelocalsaltlakecity.com

GRANATO'S BLOCK PARTY 2700

Granato's, the original specialty grocery in SLC, reemerges with a reinvention of its space on 2700 East, serving everything from lasagne and calzone to cannoli and tiramisu. 4044 S. 2700 East, Holladay, 801-878-9728, granatos.com

SALT LAKE CHINATOWN

Grab a boba milk tea and browse the cluster of gift shops and eateries behind the auspicious grand gateway that will draw you in off of State Street. You'll find gifts, exotic groceries, including fresh produce, and a variety of excellent Chinese food in Salt Lake's own little Chinatown.

3370 S. State St., 801-809-3229, saltlakechinatown.com

PHOTO COURTESY OF VISIT SALT LAKE

“BORING” IS *SO* NOT OUR STYLE

THE
GATEWAY

FIND YOUR SPOT ATTHEGATEWAY.COM

f t i @ATTHEGATEWAY



Come experience the fun
and vibrant energy of
Downtown Salt Lake's
Premier Entertainment Hub,
at **The Gateway!**

*RESTAURANTS, ART, EVENTS,
SPECIALTY SHOPS AND ENTERTAINMENT.*



Squatters
PUB BREWERY®

147 WEST BROADWAY



Salt Lake City's
ORIGINAL BREW PUB
801.363.2739

Although much has changed since we opened our first brew pub, we remain
firmly dedicated to our original goal of providing our customers
world-class delicious food, handcrafted beer, and a welcoming environment.

WWW.SALTLAKEBREWINGCO.COM/SQUATTERS



Current Fish &
Oyster

GREAT DINING SALT LAKE STYLE

Salt Lake has gained fame as a dining destination because of its unique definition of good eating: Deep ties with local farms and growers who provide fresh food to the kitchens, passionate chefs who care more about their craft and pleasing their customers than fame. All paired with a warm, Western sense of casual hospitality, fine dining is never formal—here, food is another way to have fun.

SAFFRON VALLEY

26 E. Street, 801-203-3325, saffronvalley.com

Lavanya Mahate has imported her style of Indian cooking to Salt Lake City. The menu features daily specials like Chicken Tikka Masala, Coconut Korma and Vindaloo, served family style.

VENETO

370 E. 900 South, 801-359-0708, venetoslc.com

True regional cuisine is cooked up by a changing roster of chefs from the Veneto region of Italy, home place of owner Marco Stevanoni. The menu changes seasonally.

PAGO

878 S. 900 East, 801-532-0777, pagoslc.com

341 S. Main Street, 801-441-2955, pagoslc.com
Tiny, dynamic and food-driven, Pago's ingredients are locally sourced by owner Scott Evans and the menu is reimagined regularly. The great list of wines by the glass and an original craft cocktail menu are also treats.

CARSON KITCHEN

241 W. 200 South, 385-252-3200, carsonkitchen.com

Carson Kitchen made its way to Downtown Salt Lake from Las Vegas. CKSLC specializes in creative American cuisine and



thoughtfully crafted cocktails. Try the Mac and Cheese.

J. WONG'S ASIAN BISTRO

163 W. 200 South, 801-350-0888, jwongs.com

The combo Thai/Chinese fare comes from the Wong family's two heritages, and the kitchen turns out both cuisines with great flair.

LOG HAVEN

6451 E. Millcreek Canyon Rd., 801-272-8255, log-haven.com

Recognized as the most romantic restaurant in SLC, Log Haven's vintage log lodge in the crisp air of scenic Millcreek Canyon offers suave service and sophisticated mountain American fare. Don't miss it.

TABLE X

1457 E. 3350 South, 385-528-3712, tablexrestaurant.com

Three cutting-edge chefs are in charge of the modern kitchen here—let yourself be surprised by dishes you never imagined.

MAZZA

1515 S. 1500 East, 801-484-9259, mazzacafe.com

Ali Sabbah's Lebanese menu features kebabs, falafel and hummus, plus exotic like muhamara—a dip of walnuts, pome-

granate, molasses and spices, a delight for vegetarians.

CURRENT FISH & OYSTER

279 E. 300 South, 801-326-3474, currentfishandoyster.com

Current offers fresh seafood in all kinds of regional preparations, plus a great cocktail and wine list in an industrial-chic setting. Check out the sister bar, UnderCurrent, right next door.

HIMALAYAN KITCHEN

350 S. State St., 801-328-2077, himalayankitchen.com

Utah's first Nepali restaurant still rules. Owner and former trekker Surya Bastakoti has created a little piece of Nepal, with art and atmosphere as well as food. Besides momos, chilis and other traditional Nepali dishes, there is an extensive selection of Indian dishes.

LA CAILLE

9565 Wasatch Blvd., Sandy, 801-942-1751, lacaille.com

Utah's grande dame of dining—the long entrance road, the peacocks, the fairy-tale French chateau with its luxurious dining rooms—the whole experience is magical.

PHOTO COURTESY OF VISIT SALT LAKE

VALTER'S OSTERIA

173 W. Broadway, 801-521-4563, valtersosteria.com
Sadly, Valter Nassi—Salt Lake's most famous host—passed away last year. But the table-side preparations, Old World service and general conviviality of his restaurant still remain and make this a local fave for high-end Italian cuisine.

AFGHAN KITCHEN

1465 S. State St., 801-953-1398, afghan-kitchen.com

The vision of Wali Arshad's restaurant is to give you a taste of Afghanistan's cultural sense of hospitality. The lamb shank, qabili palau, is the most popular dish. Everything is served family style.

BAMBARA

202 S. Main St., The Monaco, 801-363-5454, bambaraslc.com

Bambara boasts an ambiance of low-key elegance reflected in its menu. Don't miss the corn bisque.

PROVISIONS

3364 S. 2300 East, 801-410-4046, slcprovisions.com

Modern American cuisine using regional ingredients and a melting pot of inspiration, the menu ranges from pizza to elegant and the decor is chic and cheerful.

HSL

418 E. 700 South, 801-539-9999, hslrestaurant.com
Much-lauded chef-owner Briar Handy is one of the most innovative chefs in town. In a comfortably stylish setting, expect modern combinations of grains and vegetables on small plates as well as a beef-cheek burger.

SLC EATERY

1017 S. Main St., 801-355-7952, slceatery.com
This James Beard nominated restaurant features a cutting-edge menu mixing ideas from around the globe and featuring a unique appetizer cart.

ZEST

275 S. 200 West, SLC, 801-433-0589, zestslc.com
Zest's focus is on vegan, vegetarian and gluten-free, all locally sourced as much as possible. Try a portobello steak with lemon risotto. This is the 21st century, folks.

OQUIRRH

368 E. 100 South, 801-359-0426, oquirrhslc.com
This is a small, award-winning chef-run cafe—named after our western mountains and specializing in uniqueness—curry-crusted fried leg of lamb, milk-braised potatoes, chicken confit pot pie, for example.

CAFFE MOLISE AND BTG

404 S. West Temple, 801-364-8833, caffemolise.com
Set in a gorgeously redone old building, Molise serves a menu of regional Italian specialties; BTG (By The Glass) has an amazing array of wines, yes, by the glass.

ARLO

271 N. Center St., 385-266-8845, arlorestaurant.com
Delightful chef-run restaurant tucked into an old house near the Capitol. Fresh menu of locally sourced food and inimitable charm.

For a complete listing of these and other great local restaurants, go to:

VISITSALTLAKE.COM/RESTAURANTS



BEST PATIO DINING

There's nothing like a delicious meal or cool beer enjoyed outside in the fresh air. Fortunately, there are plenty of excellent Salt Lake bars and restaurants to accommodate. Some are in the heart of the city, some are tucked away in the neighborhoods and a few are high in the mountains.

CAFFÉ MOLISE

Caffé Molise has long been one of Salt Lake's best patio-dining spots. The combination of perfect pasta and patio-ambiance pleasure is a must for summer dining. 404 S. West Temple, caffemolise.com

THE DODO

Enjoy brunch, lunch and dinner on The Dodo's patio, which has gorgeous views of neighboring Sugarhouse Park and the Wasatch Mountain Range in the distance. 1355 E. 2100 South, thedodorestaurant.com

EVA SMALL PLATES & DRINKS

The hidden patio out back is nestled between the surrounding downtown buildings. The space is a hip and charming combo of sophisticated and quirky. 317 S. Main St., evaslc.com

KIMI'S CHOP & OYSTER HOUSE

Kimi's Chop and Oyster House is in the heart of Sugar House, where you can enjoy mignonette and cocktail sauce beneath Roman awnings, sipping your favorite drink. 2155 Highland Dr., kimishouse.com

LOG HAVEN

Halfway up Millcreek Canyon, Log



Eva Small Plates & Drinks

Haven is regarded as one of Salt Lake's most romantic dining destinations, where guests can dine sitting beside a picturesque waterfall. Some nights, you can make reservations to dine with your dog on the patio. 6451 Mill Creek Canyon Rd., log-haven.com

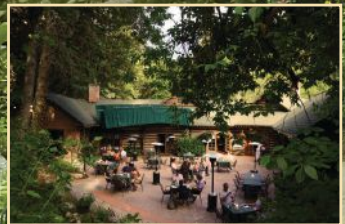
MARKET STREET GRILL COTTONWOOD

The elevated, second-story patio offers beautiful views for diners while they enjoy some of the valley's best sea food. 2985 E. Cottonwood Parkway, marketstreetgrill.com

RIO GRANDE CAFE

Located at the Historic Estación de Bomberos No. 8, the laid-back cafe serves your favorite Mexican comfort food, margaritas and brews. 258 S. 1300 East., riograndecafeslc.com

Waterfall
Patio
Dining



LOG HAVEN

R E S T A U R A N T

Romantic Wilderness Dining

20 minutes from downtown SLC • (801)272-8255 • Log-haven.com



BEST BREWS

Salt Lake's brewmasters have been refining their craft for decades. Since Greg Schirf founded Utah's first microbrewery in 1986, Beehive brewers have gotten better and better. Just about every brewery in Utah has a wall covered with awards. And, craft brewing's rising popularity means that beer lists get the same kind of attention as wine lists. The Salt Lake Brewery Pass (saltlakebrewerypass.com) is perfect for those looking to sample an ample number of microbreweries. Here is where to find Salt Lake's finest.

**BEWILDER BREWING CO.**

445 S. 400 West, 385-528-3840, bewilderbrewing.com

Bewilder has always had a focus on people's discovery of the craft beer world and the brewing process. They have sixteen taps serving English pub-style beers and German lagers.

BOHEMIAN BREWERY

94 E. 7200 South, Midvale, 801-566-5474, bohemiانبrewery.com

Specializing in the lagers beloved by Bohemian's owners' Czech forebears, beer here follows the ancient Reinheitsgbot.

CHAPPELL BREWING

2285 S. Main Street, 801-455-3478, chappell.beer

This relative newcomer offers intentionally crafted ales, brewed with an uncompromising and unapologetic approach to quality, flavor and drinkability.

**DESERT EDGE BREWERY**

273 Trolley Square, 801-521-8917, desertedgebrewery.com

The constantly changing variety of brews sets Desert Edge apart from all the others. Desert Edge is guided by the belief that they can do it their way, break some of the rules and give their customers a great experience. It's a "regulars" establishment.

**EPIC BREWING**

825 S. State St., 801-906-0123, epicbrewing.com

This is Utah's first brewery since prohibition to brew exclusively 22-ounce bottles of high alcohol content beer, perfect for sharing or savoring. One of the top-rated breweries in the world, Epic is known for their hand crafted, cutting edge beers.

EMIGRATION BREWING CO.

4170 Emigration Canyon Rd., 385-800-1098, emigrationbrewing.com

Utah's first brewery was founded at the mouth of Emigration Canyon in 1865. Now EBC is brewing pilsners and lagers.

**FISHER BREWING COMPANY**

320 W. 800 South, 801-487-2337, fisherbeer.com.

This popular brewery honors the legacy of Albert Fisher, one of Utah's first brewers. Fisher prides itself in being a brewery first and its beer is only available in its low-key, Granary District tap room.

GRID CITY BEERWORKS

333 W. 2100 South, SLC, 801-906-8390, gridcitybeerworks.com

This brewery, founded by a bunch of brew buddies, makes approachable beers designed more as session beers (rather than one-and-dones) in a variety of styles.

**KIITOS BREWING**

608 W. 700 South, 801-215-9165, kiitosbrewing.com

Kiitos brews are on several menus around town. If you stop by the brewery to taste, you can play pinball, too. Kiitos sees brewing as a privilege and they are thankful to be doing so, just as they're thankful for good friends, family and a beautiful planet on which to enjoy them all.

**LEVEL CROSSING BREWING COMPANY**

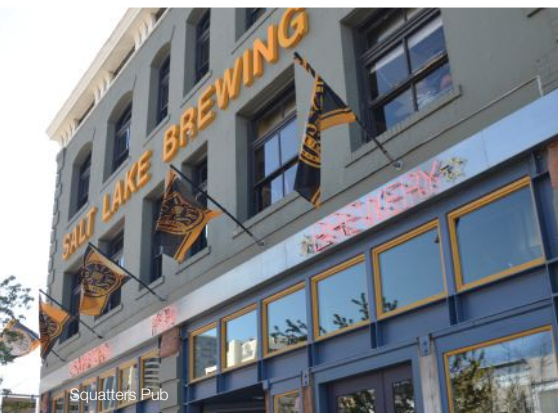
2496 S. West Temple, 385-270-5752, levelcrossingbrewing.com

Level Crossing Brewing Company sees itself as a crossroads where people can meet, share stories and enjoy delicious beer and a great food menu. Take your pizza or sandwich out to the patio.

**MOUNTAIN WEST CIDER**

425 N. 400 West, 801-935-4147, mountainwestcider.com

Mountain West brings a passion for the community, locally-owned business and, obviously, good times with good friends. Its outdoor "Cider-garten" is the perfect place for a sunny afternoon.



PROPER BREWING CO.

865 Main St., 801-906-8604,
properburgerslc.com

Proper Brewery and Burgers expands the brewing capacity of the original and adds a burger bar. Proper is a craft brewery, bar and bottle shop.



RED ROCK BREWING CO.

254 S. 200 West, 801-521-7446,
redrockbrewing.com

In the past 20 years, Red Rock Brewery has earned a national reputation as one of the most creative breweries in the country.



ROHA BREWING PROJECT

30 E. Kensington Ave., 385-227-8982,
rohabrewing.com

The name comes from two of the three owners' names, Rob Phillips and Chris Haas. RoHa believes there's always a place for another great beer.

SALT FLATS BREWING

2020 Industrial Circle, 801-828-3469,
saltflatsbeer.com

This beer celebrates the racecar driver in all of us. Born in a garage and built for speed.



Look for this icon throughout the Visitors Guide for Brewery Pass locations.

SALT LAKE BREWERY PASS

The Salt Lake Brewery Pass introduces beer lovers and drinkers to the area's award-winning craft ales, lagers, porters and ciders at 15 of Salt Lake's best breweries and brewpubs.

CHOOSE YOUR PASS

**1-DAY SALT LAKE
BREWERY PASS: \$20**

**3-DAY SALT LAKE
BREWERY PASS: \$30**

**90-DAY SALT LAKE
BREWERY PASS: \$40**

HOW IT WORKS

1. Go to saltlakebrewery-pass.com and add the pass to the cart and complete the checkout process. You will receive an email confirmation.
2. Follow email links to get the web app. Access the app by viewing the confirmation email/text on your mobile device.
3. Sign into the app with your email address. A pop-up prompts you to add the app to your Home Screen. And now you're ready to explore and sample SLC's best brews.

WHAT YOU GET

\$5 credit, delivered to your phone, that can be used toward beverage, food or merchandise at each of the 15 breweries.

SCION CIDER

916 Jefferson Street, 801-419-3507,
scionciderbar.com

Scion's cider-focused bar features a rotating menu of modern and traditional ciders, apple based spirits and specialty sippers.

SHADES BREWING

2160 S. West Temple, 435-200-3009,
shadesofpale.com

This small mom-and-pop brewery supplies many local restaurants or you can stop by their tap room. Shades' long-standing mission is to develop inspired, incomparable recipes with refined twists on classic styles.

SQUATTERS PUB

147 W. Broadway, 801-363-2739,
squatters.com

Squatters is firmly dedicated to its original goal of providing its customers world-class handcrafted beer and food in a warm, friendly environment.

TF BREWING

936 S. 300 West, 385-270-5972, tfbrewing.com
 TF stands for Templin Family. Brewmaster

Kevin Templin is known for his meticulously made German-style beer.

WASATCH BREW PUB SUGAR HOUSE

2110 Highland Drive, 801-783-1127,
wasatchbeers.com

One of Salt Lake's original microbreweries' hip Sugar House location.

SQUATTERS AND WASATCH TAP ROOM & BEER STORE

1763 S. 300 West, 801-466-8855,
wasatchbeers.com

Featuring 24 of Utah's freshest taps featuring an unmatched lineup of award-winning Squatters and Wasatch beers. Come in and grab a crowler or growler to-go or sit down and enjoy a cold one.

UINTA BREWING COMPANY

1722 Fremont Dr., 801-467-0909,
uintabrewing.com

Uinta founder Will Hamill says, "We make beer. Period." There is a small cafe, but here, it's all about the brew.



PHOTO COURTESY OF VISIT SALT LAKE

BAR SCENE

Salt Lake has a vibrant drinking culture with creative mixologists, craft beers and ciders, local distilleries and artisanal bar menus. Cheers!

ALIBI

369 Main St., alibislc.com. Alibi employs expert bartenders, who sling delicious craft cocktails, and the menu features tasty tacos and pozole.

BACK DOOR ON EDISON

152 E. 200 South, 801-267-1161, backdoorslc.com
Back Door is a bar in downtown Salt Lake City connected to the adjoining Laziz Kitchen and serves beautiful signature cocktails.

BAR-X

155 E. 200 South, 801-355-2287, beerbarslc.com
The leader of Salt Lake's new cocktail movement serves classics and inventions behind the best electric sign in the city.

BEER BAR

161 E. 200 South, 801-259-0905, beerbarslc.com
Next door to the venerable Bar-X is this serious beer-food emporium. The brainchild of TV star Ty Burrell, Beer Bar takes beer to a new level with more than 140 brew options.

BTG WINE BAR

404 S. West Temple, 801-359-2814, btgwinebar.com
BTG, "By the Glass," has craft cocktails and specialty beer, but the stars are the wines by the glass. Order a tasting or full glass.

CLIFF DINING PUB

12234 Draper Gate Dr., 801-523-2053, cliffdiningpub.com
A spectacular elevated location with a view of the Oquirrh Mountains, Cliff House is a combo night club, sushi bar and restaurant.

COPPER COMMON

111 E. Broadway, 801-355-0543, coppercommon.com
Chef Ryan Lowder's cutting-edge tavern boasts artisan cocktails and top-notch food.

ELIXIR LOUNGE

6405 S. 3000 East, Holladay, 801-943-1696, elixir-loungeutah.com. An upscale martini, craft cocktail and wine bar features a DJ, good food and live music on Fridays. Wood-fired BBQ, steaks, bar snacks and beer and cocktails.





FRANKLIN AVE. COCKTAILS & KITCHEN

231 S. Edison Street, 385-831-7560, franklinaveslc.com

This is a craft cocktail bar with modern American cuisine, showcasing seasonal ingredients.

GARAGE ON BECK

1199 Beck St., 801-521-3904, garageonbeck.com

The old garage in the shadow of the refinery lights is a beloved Salt Lake hangout. Play cornhole on the patio, listen to live music inside and enjoy the famous funeral potatoes.

HANDLEBAR

751 N. 300 West, 801-953-0588, handlebarslc.com

It may be geared toward cyclists, but everyone is welcome to enjoy the casual menu, cocktails and 20 draft beers.

THE HOG WALLOW PUB

3200 E. Big Cottonwood Canyon Rd, 801-733-5567, thehogwallow.com. The "Hog" is an incarnation of a bar founded in 1947. The converted Conservation Corps building offers a funky and comfortable atmosphere with live music, a bar menu, beer, spirits and wine.

ICE HAUS

7 E. 4800 South., Midvale, 801-266-2127, icehausbar.com

This modern German-themed gastropub has dart boards, TVs and live music.

LAKE EFFECT

155 W. 200 South, 801-532-2068, lakeeffectslc.com

Dressed to the nines and furnished with tiny two-tops, booths and lounges, Lake Effect has food, live music and craft cocktails. Downstairs is another bar, The Rabbit Hole.

POPLAR STREET PUB

242 S. 200 West, 801-532-2715, poplarstreetpub.com

A popular gathering place for groups and regulars, Poplar Street has lots of space to roam and the food goes beyond pub fare.

PURGATORY

62 E. 700 South, 801-596-2294, purgatorybar.com

Tinted windows, low lights, murals and graffiti form the eclectic decor and the liquid menu is just as varied. A breakfast and brunch hotspot.



THE RUIN

159 S. Main St., SLC, 801-869-3730, ruinslc.com

Dimly lit and furnished with plush leather seating, this cool cocktail bar serves light fare to accompany its inventive cocktail selection.

SEABIRD BAR & VINYL ROOM

7 S. Rio Grande., 801-456-1223, seabirdutah.com

Tucked into the second floor at Gateway, this little bar offers intimacy and sophistication.

SUGAR HOUSE PUB

1994 S. 1100 East, SLC, 801-413-2857

Popular with Westminster College students and professors alike, this is a laid back watering hole with two bar areas.

UNDER CURRENT

279 S. 300 East, 801-574-2556, undercurrentbar.com

This sibling of the adjoining seafood restaurant is hip but comfortable, congenial but not loud, classy but unpretentious.

WATER WITCH

163 W. 900 South, 801-462-0967, waterwitchbar.com

Owned and tended by three of the best bartenders in town, this tiny bar is the true heart of SLC's cocktail scene. Drop in for beer, a classic or a blackboard special. You'll be surprised.

WHITE HORSE SPIRITS & KITCHEN

325 Main St., 801-433-1371, whitehorseslc.com

This distillery-pub has big plans for making liqueurs and other spirits. Try the rum.

LOCAL SPIRITS

Visit Utah's micro-distilleries to purchase locally made spirits or for tours and tastings. Call ahead for schedules and availability.

DENTED BRICK DISTILLERY

3100 S. Washington St., SLC, 801-883-9837, dentedbrick.com. Specializing in clear spirits, including one of Utah's only rums, Dented Brick was built above an historic Artesian well.

BEEHIVE DISTILLING

2245 S. West Temple, SLC, beehivedistilling.com. Beehive's small-batch Jack Rabbit Gin is based on a unique herbal blend.

OUTLAW DISTILLERY

552 W. 8360 South, Midvale, 801-706-1428, outlawdistillery.com. This husband and wife team makes rum, spiced rum, white whiskey, whiskey and Outlaw moonshine. Tours available.

DISTILLERY 36

2374 S. Redwood Rd., SLC, 801-983-7303, distillery36.com. Utah was the 36th and final state to vote for the end of Prohibition—hence the name. Brigham's Rum is just the first product.

EIGHT SETTLERS DISTILLERY

7321 Canyon Centre Pkwy., Cottonwood Heights, 385-900-4315, eightsettlersdistillery.com. Eight Settlers Distillery is inspired by the history of the area, and so are the spirits.

HAMMER SPRING DISTILLERS

3697 W. 1987 South, SLC, 801-9599-4704, hammerspring.com. The distillery and store make and sell a variety of spirits, including vodka, gin, coffee liqueur and whiskey. Tours and tastings available.

WATERPOCKET DISTILLERY

2084 W. 2200 South, West Valley City, waterpocket.co. This is a maker of unusual spirits, such as bitter ones like Toadstool and an agave-based mexcal-type liquor, plus liqueurs from antique recipes.



SUGAR HOUSE DISTILLERY

2212 S. West Temple, SLC, 801-726-0403, sugarhousedistillery.net. They started out making vodka from spring water from the Wasatch Mountains, but now produce small-batch rum, whiskey, rye and bourbon.

MOUNTAIN WEST HARD CIDER

425 N. 400 West, SLC, 801-935-4147, mountainwestcider.com. The hard cider trend inspired locals to develop Ruby, a European-style apple cider.

TSUKI SAKE

See tsukisake.com for retail locations, 385-450-7253. Utah's first craft sake maker, owned and operated by a female Japanese-American brewer.

HOLYSTONE DISTILLING

207 W. 4860 South Murray, 385-800-2580, holystone-distilling.com. Find unique spirits at this luxury distillery, including Utah's strongest gin. Tours available.

SALT LAKE BREWERY PASS

If you're a fan of the occasional ice-cold pint, you'll be a fan of the Salt Lake Brewery Pass.

It's a great way to sample some of the area's award-winning ales, lagers, porters and ciders. Crafted by skilled brewmasters who have been nationally recognized for decades.

Delivered instantly to your phone, the mobile Brewery Pass is a \$5 credit that can be used toward any beverage, food or merchandise at each of the 15 participating breweries. Sold in 1-day, 3-day and 90-day increments.

Get all the details at visitsaltlake.com.



SALT LAKE

visitsaltlake.com

DINING DISCOVERY

From special nights out to a quick refuel between adventures, you'll find the perfect spot to suit any craving.

SALT LAKE CITY

5TH STREET GRILL

150 W. 500 South, SLC, 801-323-7575 sheratonsaltlakecityhotel.com. 5th Street Grill offers creative American entrees, outstanding selections of light meals and drinks and everything in between.

ADELAIDE

131 S. 300 West, 801-839-7878, adelaidesaltlake.com. Find Adelaide in the Le Meridien Hotel located in the heart of Salt Lake City's dynamic Warehouse District.

AMELIA'S GRILL & BAR

5575 W. Amelia Earhart Drive, SLC, 801-537-7020 wyndhamhotels.com. Serving Saturday and Sunday brunch and dinner and cocktails every night of the week.

ARLO RESTAURANT

271 N. Center Street, SLC, 385-266-8845, arlorestaurant.com. Chef Milo Carrier has created a destination in a small, charming house in the Marmalade neighborhood. A fresh approach and locally sourced ingredients are the root of a menu that bridges fine and casual dining, at once sophisticated and homey.

BAMBARA

202 S. Main, SLC, 801-363-5454, bambara-slc.com. Chef Jerry Pacheco makes decisions about food based on sustainability and the belief that good food should be available to everybody. Using a Burgundian imagination, he turns out dishes with a sophisticated heartiness three times a day.

BAR 110 WEST

DoubleTree Suites by Hilton, 110 W. 600 South, SLC, 801-359-7800, saltlakecity-suites.doubletree.com. Relax after a busy day at Bar 110 West, open daily from 11 am-midnight.

BEEHIVE DISTILLING

2245 S West Temple, SLC, 801-556-0646, beehivedistilling.com. This favorite offers a full range of spirits distilled, bottled and labeled in its Salt Lake City distillery.

BEWILDER BREWING COMPANY

445 S. 400 West, SLC, 385-528-3840, bewilderbrewing.com. Located just a block south of Pioneer Park, Bewilder Brewing Co. is Salt Lake's newest downtown brewpub.

BLUE IGUANA RESTAURANT

165 S. West Temple, SLC, 801-533-8900, blueiguanarestaurant.net. This

colorful downtown restaurant has a charming downstairs location and patio, and has been a Salt Lake staple for decades. Enchiladas, tacos, and "jengo" nachos—piled high on a platter—are all good, as are the margaritas. A nifty addition: phone chargers on every table.

BLUE LEMON

55 W South Temple, SLC, 801-328-2583, bluelemon.com. Blue Lemon's sleek interior and high-concept food have city style. Informal but chic, many-flavored but healthy, Blue Lemon's unique take on food and service is a real plus.

CAFE NICHE

779 East 300 South, SLC, 801-433-3380, caffeniche.com. Anytime is the best time to eat here. Food comes from farms all over northern Utah and the patio is a favorite in fine weather.

CAFE TRIO

680 S. 900 East, SLC, 801-533-8746, triodining.com. Pizzas from the wood-fired brick oven are wonderful. This is one of the city's premier and perennial lunch spots. Be sure to check out their weekly specials.

CAFFE MOLISE

404 S. West Temple, SLC, 801-364-8833, caffemolise.com. Fresh fish,

grilled meats, pasta, salads and decadent desserts—Caffe Molise has it all, including an excellent wine list, full bar, garden patio and private dining.

THE CAPITAL GRILLE

40 E. 100 South Ste. 100, SLC, 385-419-3888, thecapitalgrille.com. Located near the Salt Palace Convention Center, The Capital Grille promises to deliver delicious dry-aged steaks and entrees made with the highest quality ingredients, featuring more than 350 wines and classic cocktails with a twist.

CAPUTO'S MARKET & DELI

314 West 300 South, SLC, 801-531-8669, caputosdeli.com. In addition to a great selection of olive oils, imported pastas, salamis and house-aged cheeses, Caputo's offers the largest selection of fine chocolate in the country. The deli menu doesn't reflect the market, but is a reliable source for meatball sandwiches and such.

CHILE-TEPIN

307 W. 200 South, SLC, 801-883-9255, chile-tepin.com. Popular for its generous servings of Mexican food, this place usually has a line on Friday nights. Heavy on the protein—the molcajete holds beef, pork and chicken—but cheese enchiladas and margaritas and other staples are good, too.

CHIP COOKIES

155 E. 900 South, SLC, 801-856-0463, chipcookies.co. Established in 2016, Chip is the original gourmet cookie delivery company—perfect for sharing, gifting, and treating yourself.

CHRISTOPHER'S PRIME + SONOMA WINE BAR & GRILL

110 W. Broadway Street, SLC, 801-890-6616, christophersut.com. Locally owned and operated with patio seating, piano bar and private rooms. This favorite is located across the street from the south doors of the Salt Palace.

CONTRIBUTION COCKTAIL LOUNGE

170 South West Temple, SLC, 801-596-1234, hyatt.com. Mix, mingle, and engage in good conversation over batch-crafted cocktails, a curated beer selection, or top wine labels on tap.

COPPER CANYON GRILL HOUSE & TAVERN

215 S Temple, Salt Lake City, 801-521-7800, radisson.com. Creating regional and local cuisine, this grill house offers the finest aged beef, seafood and pasta in a friendly, casual atmosphere.

COPPER COMMON

111 E. Broadway, Ste. 190, SLC, 801-355-0543, coppercommon.com. Copper Common is a real bar—that means you don't actually have to order food. But on the other hand, why wouldn't you want to? This bar has a real chef.

THE COPPER ONION

111 E. Broadway, Ste. 170, SLC, 801-355-3282, thecopperonion.com. An instant hit when it opened, constant crowds attest to the popularity of Ryan Lowder's Copper Onion. Though the hearty, flavorful menu changes regularly, some favorites never leave: the mussels, the burger, the ricotta dumplings.

CURRENT FISH & OYSTER

279 E. 300 South, SLC, 801-326-3474, currentfishandoyster.com. An all-star team made this cool downtown restaurant an instant hit, with excellent and inventive seafood dishes with plenty of non-fishy options.

THE DAILY

222 S. Main St., SLC, 801-297-1660, thedailyslc.com. The Daily features Doma Coffee, daily fresh baked goods, delicious food, and a wide selection of grab and go juices and meals.

DESERT EDGE BREWERY AT THE PUB

273 Trolley Square, SLC, 801-521-8917, desertedgebrewery.com. Good pub fare and freshly brewed beer make this a hot spot for shoppers, the business crowd and ski bums.

DESTINATIONS LOUNGE

2245 S. West Temple, SLC, 801-531-0800, marriott.com. This "destination" offers a bar and lounge with a pub-style menu for dinner.

THE DODO RESTAURANT

1355 E. 2100 South, SLC, 801-942-7578, thedodorestaurant.com. Since 1981, this neighborhood gathering place has been serving delicious food in an upscale casual environment.

EIGHT SETTLERS DISTILLERY

7321 Canyon Centre Pkwy., Cottonwood Heights, 385-900-4315, eightsettlers.com. Owner Radu enjoyed distilling spirits as a young boy with his grandpa in his home

country of Romania and his dream of distilling professionally has successfully come to fruition.

EVA SMALL PLATES & DRINKS

317 S. Main Street, SLC, 801-359-8447, evaslc.com. Located in downtown Salt Lake, Eva has a large menu full of specialized Mediterranean small plates and cocktails.

EXTRA INNINGS

Sheraton Salt Lake City Centre, 150 West 500 South, SLC, 801-401-2000, starwoodhotels.com. Whether unwinding after a productive day of meetings or looking to catch the big game, Extra Innings Lounge offers American cuisine in a casual setting.

FISHER BREWING COMPANY

320 W. 800 South, SLC, 801-487-2337, fisherbeer.com. Since opening in 2017, Fisher Brewing has cemented itself as a staple in the local craft beer community.

FLANKER KITCHEN & SPORTING CLUB

26 North Rio Grande St., Suite 35, SLC, 801-683-7070, flankerslc.com. This Gateway favorite features a restaurant and bar with private karaoke and sport simulator rooms and a cocktail lounge, serves American fare and a selection of spirits and local craft beers. On weekends, there's a lively brunch.

FLEMINGS PRIME STEAKHOUSE & WINE BAR

20 S. 400 West, SLC, 801-355-3704, flemingssteakhouse.com. Nationally acclaimed, featuring USDA Prime beef, aged to perfection and hand-cut. Flemings features

a progressive wine list featuring 100 wines by the glass. Open nightly.

FROM SCRATCH

62 E. Gallivan Ave., SLC, 801-961-9000, fromscratchslc.com. From Scratch offers an ancient style for the modern age. Using a hand-made Austrian flour mill and wood-fired oven, the restaurant offers pizza, pasta, salads, as well as a signature hamburger.

GARAGE ON BECK

1199 N. Beck St., SLC, 801-521-3904, garageonbeck.com. Everyone compares it to an Austin bar with live music, good food and the rockiest patio in town. Try the Chihuahua, a chile-heated riff on a margarita.

THE GLOWBAL BITE

200 N. Admiral Byrd Road, SLC, 801-746-5157, theglowbalbite.com. Located inside the Four Points Marriott, Glowbal offers breakfast, lunch and dinner featuring outstanding Continental cuisine.

GRACIE'S

326 S. West Temple, SLC, 801-819-7565, gracieslc.com. Gracie's is a gastropub in the heart of Salt Lake City that offers a unique dining experience, live music and a large convivial outdoor patio space.

HALLPASS SLC

153 S. Rio Grand St. Salt Lake City, 801-415-9886, hallpassslc.com. Salt Lake's first food hall features eight restaurants and two bars.

HIMALAYAN KITCHEN

360 S. State Street, SLC, 801-328-2077, himalayankitchen.com. This local Nepali restaurant with Indian food serves momos, chow chow, chili

chicken thukpa, tikki masala, tandoori chicken, goat masala and different curries.

HIRES BIG H

425 S. 700 East, SLC, 801-364-4582, hiresbigh.com. Famous for the "Big H" burger, fresh cut fries, homemade onion rings, special dipping sauce and frosty mugs of root beer, Hires Big H is the gathering place for tasty food and cheerful service for friends and family from all walks of life.

HSL

418 E. 200 South, SLC, 801-539-9999, hslrestaurant.com. The initials stand for "Handle Salt Lake"—Chef Briar Handly made his name with his Park City restaurant, Handle, and now he's opened a second restaurant down the hill. The place splits the difference between "fine" and "casual" dining; innovative food is excellent in a casual atmosphere.

HOG WALLOW PUB

3200 E. Big Cottonwood Canyon Rd., Cottonwood Heights, 801-2733-5567, thehogwallow.com. Secluded in pine trees, The Hog Wallow Pub is located kitty-corner to the historic Old Mill ruin at the base of Big Cottonwood Canyon.

ITALIAN GRAFFITI

156 S. 400 West, SLC, 702-289-9963, italiangraffiti.com. A contemporary interpretation of classic Italian fare in a room of flourishing greenery and natural woods.

J WONG'S THAI & CHINESE BISTRO

163 W. 200 South, SLC, 801-350-0888, jwongs.com. Drawing from their Thai and Chinese heritage, J. Wong's menu allows you to choose either. Lunch is a great deal. Don't miss the ginger

whole fish or the Gunpowder cocktail. Call ahead for authentic Peking duck.

KEYS ON MAIN

242 S. Main Street, SLC, 801-363-3638, keysonmain.com. Salt Lake City's Premiere Dueling Piano Club offers a full liquor menu, light food, and one of the best all-request dueling piano shows in Utah.

KIITOS BREWING

608 W. 700 South, SLC, 801-215-9165, kiitosbrewing.com. A rising star, Kiitos' brews are on several menus around town. But if you stop by the brewery to taste, you can play pinball, too.

KIMI'S CHOP & OYSTER HOUSE

2155 S. Highland Drive, SLC, 801-946-2079, kimishouse.com. Kimi Eklund brings a touch of glam to Sugar House with her high-style, multi-purpose restaurant: It's an oyster bar, it's a steakhouse, it's a lounge. Kimi's makes for a fun change from the surrounding pizza and beerscapes, with dramatic lighting, velvet and live music.

LA BELLA PIASTRA

Salt Lake City Marriott City Center, 220 S. State Street, SLC, 801-961-8700, marriott.com. Contemporary and upscale, it's located next to the Piastra on Gallivan Plaza in the Marriott City Center.

LAKE EFFECT

155 W. 200 South, SLC, 801-532-2068, lakeeffectslc.com. An eclectic bar and lounge with a fine wine list and full menu, this hip bar features live music many nights.

LAKEVIEW RESTAURANT

5151 Wiley Post Way SLC, 801-578-4415, hiltonslc.com Restaurant and lounge featuring breakfast, lunch, dinner, drinks, and appetizers in a casual dining atmosphere.

LAUREL BRASSERIE & BAR

555 South Main St., SLC, 801-258-6000, laurelslc.com. Located in the Grand America, this restaurant reflects a simple yet high-quality approach to American cuisine. The chefs have created a satisfying and fresh menu of seasonally-inspired fare for breakfast, lunch and dinner. Laurel is available for private events.

LAZIZ KITCHEN

912 Jefferson Street W, SLC, 801-441-1228, lazizkitchen.com. There are so many reasons to love Laziz Kitchen. Some are obvious such as their top-notch Lebanese-style hummus, muhammara and toum.

LEGENDS PUB & GRILL

677 S. 200 West, SLC, 801-355-3598, whylegends.com. Legends offers great food, sports and fun. Kick back and watch your favorite games on the many big screens.

LEVEL CROSSING

2496 S. West Temple, South Salt Lake, 385-270-5752, levelcrossingbrewing.com. Level Crossing Brewing Company is a great meet-up spot for people to share a craft beer and a fresh wood-fired pizza, with trivia on Mondays.

LITTLE AMERICA COFFEE SHOP

Little America Hotel, 500 S. Main, SLC, 801-596-5700, saltlake.littleamerica.com. Little America has been the favorite gathering place for generations of native Salt Lakers. Weekdays, you'll find the city power players breakfasting in the coffee shop.

LITZA'S PIZZA

400 S. 716 East, SLC, 801-359-5352, litzaspizza.com. This local favorite is known for its pizza made from scratch with fresh dough, sauce blended with an amazing array of spices, mozzarella cheese and fresh toppings of meats and vegetables.

LOG HAVEN

6451 E. Millcreek Canyon Road, SLC, 801-272-8255, log-haven.com. Certainly Salt Lake's most picturesque restaurant, the old log cabin is pretty in every season. Chef Dave Jones has a sure hand with American cuisine and is not afraid of frying although he also has a way with healthy, low-calorie, high-energy food. And he's an expert with local and foraged foods.

LUCKY H BAR AND GRILLE

Little America Hotel, 500 S. Main, SLC, 801-596-5700, saltlake.littleamerica.com. The Little America Steakhouse offers trademark gracious service and a delicious and consistent menu.

MAR | MUNTANYA

170 S. West Temple, SLC, mar-muntanya.com. Located on the sixth floor of the Hyatt Regency, Mar | Muntanya boasts a sophisticated, evocative atmosphere with breathtaking views and a menu drawn from the coastal

and mountainous regions of Catalonia and the Basque Country of Northern Spain.

MARKET STREET GRILL

48 W. Market Street, SLC, 801-322-4668; 2985 E. 6580 South, SLC, 801-942-8860; 10702 S. River Front Parkway, South Jordan, 801-302-2264, marketstreetgrill.com. This is one of SLC's fave fish restaurants with multiple locations around the valley. Fish is flown in daily and the breakfast is an institution.

MARKET STREET OYSTER BAR

2985 E. 6580 South, SLC, 801-942-8870; 54 Market Street, SLC, 801-531-6044, marketstreetoysterbar.com. This is one of the best selections of fresh oysters in town: Belon, Olympia, Malpeque and Snow Creek, plus Bluepoints. Crab and shrimp are conscientiously procured.

OASIS CAFE

151 S. 500 East, SLC, 801-322-0404, oasiscafeslc.com. Oasis has a New Age vibe, but the food's only agenda is taste. Lots of veg options, but meat, too. The German pancakes are wonderful, but its imaginative evening menu suits the space.

THE OLD SPAGHETTI FACTORY

189 Trolley Square, SLC, 801-521-0424, osf.com. The Old Spaghetti Factory is an Italian, family-friendly restaurant located in historic Trolley Square.

PAGO ON MAIN

341 S. Main Street, SLC, 801-441-2955, pagoslc.com. Hand-crafted food is matched with a curated beverage program centered on an award-winning natural wine list.

P.F. CHANG'S CHINA BISTRO

174 W. 300 South, SLC, 801-539-0500, pfchangs.com. Farm to Wok is the food philosophy at PF Chang's, where chefs use real ingredients to make food and signature beverages from scratch.

PERKINS CAFE & BAKERY

230 N. Admiral Byrd Road- Intl., SLC, 801-355-4488, mariott.com. This is the place to go for quick service lunch and dinner. Their famous breakfast menu, bread bowl salads, chicken pot pies, and cream cheese, silk and fruit pies are worth the trip.

THE PIE PIZZERIA

273 S. 1300 East, SLC, 801-582-5700, thepie.com. Students can live, think and even thrive on a diet of pizza, beer and soft drinks, and The Pie is the quintessential college pizzeria. (There are other locations.)

PORCUPINE PUB & GRILLE AT COTTONWOOD

3698 Fort Union Blvd, SLC, 801-942-7578, porcupinepub.com. With 24 beers on tap available for only \$2 every Tuesday, Porcupine has practically created its own holiday. Chicken noodle soup has homemade noodles and lots of chicken. The burgers and chile verde burritos are good, too.

PROPER BREWING CO.

857 S. Main St., SLC, 801-953-1707, venuesproper.com. Proper is big on balanced craft beers, adventurous burgers and good service.

RAW BEAN COFFEE HOUSE

611 S. West Temple, SLC, 801-990-2326, rawbeancoffee.net. This emporium serves great coffee in an uber-convenient location within walking distance from downtown hotels and the convention center, with great drive-through pickup as well.

ROHA BREWING PROJECT

30 E. Kensington Avenue, SLC, 385-227-8982, rohabrewing.com RoHa opened its doors in early 2017, founded by friends with a passion of brewing great beer without compromise.

RED ROCK BREWING COMPANY

254 S. 200 West, SLC, 801-521-7446, redrockbrewing.com. A longtime favorite for tippling and tasting—the pub draws on 45 recipes for its rotating selection.

THE RIO GRANDE CAFE

258 S. 1300 East, SLC, 801-942-7578, riograndecafeslc.com. This Utah classic features excellent southwestern fare in an old firehouse near the University of Utah campus.

RODIZIO GRILL

459 Trolley Square, SLC, 801-220-0500, rodizio.com. A playful Brazilian spirit, Rodizio features rotisserie grilled meat, expertly seasoned and carved tableside by traditionally dressed Gauchos.

RUTH'S CHRIS STEAK HOUSE

275 S. West Temple, SLC, 801-363-2000, ruthschrisprime.com. This former bank building has inner beauty. Stick with classics like crab cocktail, order the wedge,

and ask for your butter-sizzled steak no more than medium, please. The service is excellent. Eat dessert, then linger in the cool bar.

THE RUIN

159 S. Main Street, SLC, 801-597-1858, ruinslc.com. Dimly lit and furnished with plush leather seating, this cool cocktail bar serves light fare and an excellent cocktail menu.

SALT STONE

Marriott Downtown Hotel, SLC, 801-531-0800, marriott.com.

Treat your taste buds to a delectable meal in this cozy ski-lodge-inspired restaurant in downtown Salt Lake City.

THE SALT REPUBLIC

170 W. Temple, SLC, hyatt.com

Enjoy a variety of healthful and hearty dishes from local ingredients for breakfast, lunch and dinner. Located in the Hyatt Regency Hotel.

SAFFRON COLONIAL

26 E. Street, SLC, 801-203-3325, saffronvalley.com. Lavanya Mahate has imported her style of Indian cooking from South Jordan to SLC. Besides terrific lunch and dinner menus, the restaurant offers regular celebrations of specialties like Indian street food or kebabs.

THE SAPPHIRE GRILL

2177 W. North Temple, SLC, 801-364-5800, thesapphiregrill.com. The Sapphire Grill offers an extensive breakfast buffet along with al la carte breakfast choices. Expect a different lunch and dinner every day.

SAPA SUSHI BAR & ASIAN GRILL

722 S. State Street, SLC, 801-671-0140, sapabarandgrill.com. Charming Vietnamese still houses surround the courtyard. Sapa's menu ranges from Thai curries to fusion and hot pots, but sushi is the best bet.

SEABIRD

7 S. Rio Grande Street, SLC, 801-456-1223, seabirdutah.com. This little locally owned bar at the Gateway has great views, a fun patio, friendly bartenders and more style than the place can hold.

SETTEBELLO PIZZERIA NAPOLETANA

260 S. 200 West, SLC, 801-322-3556, settebello.net. Every Neapolitan-style pie here is hand-shaped by a pizza artisan and baked in a wood-fired oven. And they make great gelato right next door.

SHADES BREWING

154 W. Utopia Avenue, South Salt Lake, 435-200-3009, shadesofpale.com. Makers of delicious beer that makes drinkers realize that yeast settles but they shouldn't have to! Shades' beers are unexpected, disruptive or, as they like to say, a refined rebellion against the repetitious, routine brew.

SIEGFRIED'S DELICATESSEN

20 W. 200 South, SLC, 801-355-3891, siegfriedsdelicatessen.com. The only German deli in town is packed with customers ordering bratwurst, wiener schnitzel, sauerkraut and spaetzle.

SHADES ON STATE

366 S. State Street, SLC, 510-830-8850, shadesdowntown.com. Located in

the heart of downtown, Shades on State is the perfect place to enjoy delicious food and local craft beer and libations.

SLC EATERY

1017 S. Main St., SLC, 801-355-7952, slceatery.com. Offering modern American Cuisine in the heart of Salt Lake City, SLC Eatery constantly creates new pairings with the best ingredients and fresh takes on familiar dishes.

SNOWMOBILE PIZZA

877 S. 200 West, SLC, 801-317-8877, snowmobilepizza.com.

Snowmobile Pizza's claim to be "the raddest Za in Salt Lake City" holds up. Located in the Central 9th Neighborhood near a cluster of bars and restaurants, it's the perfect way to start an evening out.

SPENCER'S FOR STEAKS & CHOPS

255 S. West Temple, SLC, 801-238-4748, spencersforsteaksandchops.com. The quality of the meat and the accuracy of the cooking are what make it great. Beef is aged on the bone, and many cuts are served on the bone—a luxurious change from the usual cuts.

SQUATTERS PUB BREWERY

147 W. Broadway, SLC, 801-363-BREW, squatters.com. One of the "greenest" restaurants in town, Squatters brews award-winning beers and pairs them with everything from wings to ahi tacos.

STANZA ITALIAN BISTRO & WINE BAR

454 E. 300 South, SLC, 801-746-4441, stanzaslc.com. Chef Paul Cafaro brings a happy flair to this Italianesque restaurant

STAR OF INDIA RESTAURANT

1659 W. North Temple, SLC, 801-363-7555, starofindiaonline.com. The award-winning Star of India restaurant has a full bar menu, and a popular lunch buffet.

STEPHEN'S AMERICAN BISTRO

DoubleTree Suites by Hilton Salt Lake City, 110 W. 600 South, SLC, 801-359-7800, stephensslc.com. Chef John Watkins creates American and Southwest cuisine featuring innovative dishes like Cache Valley Croquet, a Beet and Goat Cheese Salad and Vietnamese Banh Mi Flat Bread.

STONEGROUND KITCHEN

249 E. 400 South SLC, 801-364-1368, stonegroundslc.com. The longtime pizza joint has blossomed into a full-scale Italian restaurant n making authentic sauces and fresh pasta.

TAMARIND

120 S. Main St., SLC, 801-364-1368, tamarindslc.com. Enjoy handcrafted, customizable Vietnamese pho, sandwiches, bowls, and specialty dishes made with fresh ingredients and to accommodate all dietary needs.

TAQUERIA 27 DOWNTOWN

149 E. 200 South, SLC, 385-259-0940, taqueria27.com. Salt Lake needs more Mexican food, and Todd Gardiner is here to provide it. Serving artisan tacos (try the duck confit), inventive guacamole and lots of tequila.

TAVERNACLE SOCIAL CLUB

50 W. Broadway, SLC, 801-519-8900, tavernacle.com. One of Salt Lake's best dueling piano clubs, featuring an entertaining, funny, all-request dueling piano show.

THISTLE & THYME

480 Wakara Way, SLC, 801-581-1000, marriott.com. An east-bench go to for eclectic American comfort food, T&T serves simple craft cuisine, 12 local craft beers and a huge assortment of local spirits.

TIN ANGEL

131 S. Main Street, SLC, 801-328-4155, thetinaangel.com. Warmly hip servers present European fare emphasizing local ingredients at this little gem inside Eccles Theater.

TOASTER'S

151 W. 200 South, 30 East 300 South, SLC, 801-328-2928, toastersdeli.com. Owner Enes Huskic serves toasted sandwiches, specialty coffees, soups, wraps and salads, along with a variety of breakfast sandwiches.

TROFI

Hilton Salt Lake City Center, 255 South West Temple, SLC, 385-259-0277, tamarindslc.com. Visitors can enjoy casual downtown bistro dining, complete with patio seating and a full bar.

Tsunami RESTAURANT & SUSHI BAR ON 9TH

1059 E. 900 South, SLC, 385-4900-0288, tsunamiutah.com. Besides sushi, the menu offers crispy-light tempura and numerous house cocktails and sakes.

TUSCAN BISTRO BY SONI'S

2177 W. North Temple, SLC, 385-727-7242, radissonhotelsamericas.com. Fuel your Salt Lake City getaway with classic Italian fare from Tuscan Bistro by Soni's.

TUSCANY

2832 E. 6200 South, SLC, 801-277-9919, tuscanyslc.com. This charming restaurant is built in the style of a northern Italian alpine chalet with an award-winning patio. The double-cut pork chop is a classic and so is the chocolate cake.

TWIST BAR & BISTRO

32 E. Exchange Place, SLC, 801-322-3200, twistslc.com. The Exchange Place space opened in the summer of 2015, with a large patio and multilevel interior featuring several bar areas.

UMI JAPANESE SHABU SHABU

2701 S. State Street, SLC, (385) 229-4216, umishabu.com. Shabu Shabu is one of Japan's most popular hot pot dishes along with Sukiyaki. The name "shabu shabu" is Japanese onomatopoeia meaning "swish swish" for the motion you make when dipping various ingredients into a simmering hot pot to cook them to your liking.

UINTA BREWING COMPANY

145 S. 300 West, SLC, (801) 839-7979, varnydersaltlake.com. Good beer requires state-of-the-art equipment, quality ingredients and talent. But great beer is brewed with environmental stewardship, support for community and passion.

VAN RYDER

145 S. 300 West, SLC, (801) 839-7979, vanrydersaltslake.com. Van Ryder's rooftop bar is located at the Le Meridien Hotel in downtown, Salt Lake City, Downtown, high above the vibrant streets of Salt Lake City.

VALTER'S OSTERIA

173 W. Broadway, SLC, 801-521-4563, valtersosteria.com. The late Valter Nassi's restaurant overflows with effervescent personality. Favorites include housemade spinach and butternut squash ravioli and housemade gnocchi in mushroom sauce.

VENETO RISTORANTE ITALIANO

370 E. 900 South, SLC, 801-359-0708, venetoslc.com. This cozy restaurant, owned by Marco and Amy Stevanoni, focuses on the regional cuisines of Veneto - hence the name. And the food is, in a word, "delizioso."

VERTICAL DINER ON 9TH

234 W. 900 South, SLC, (801)-484-8378, verticaldiner.com. Vertical Diner boasts an animal-free menu of burgers, sandwiches and breakfasts, plus organic wines and coffees.

VOSEN'S BREAD PARADISE

328 W. 200 South, SLC, 801-322-2424, vosen.com. This German-style bakery's cases are full of Eifel-brot, Schwarzbrot, Krustenbrot and lots of other "Brots" as well as sweet pastries and fantastic Berliners.

WAKARA BAR

Salt Lake Marriott University Park, 480 Wakara Way, SLC, 801-581-1000, marriott.com. One of the few bars on the east bench, Wakara serves local craft beers on tap, innovative cocktails and a gourmet bar menu.

WASATCH BREW PUB SUGAR HOUSE

2110 S. Highland Drive, SLC, 801-783-1127, wasatchbeers.com. This Sugar House pub is everything you expect a brewpub to be—hearty food, convivial atmosphere, lots of beer and a great late-ish option.

SQUATTERS AND WASATCH TAPROOM & BEER STORE

1763 S. 300 West, SLC, 801-466-8855, squatters.com. This local watering hole offers a dog-friendly patio and full liquor menu, high-point beer to go and cool merch. Tours and tastings available.

WINGTIPS BAR & BISTRO

5001 W. Wiley Post Way, SLC, 801-741-1800, ihg.com. Wingtips Bar and Bistro is a full service restaurant featuring classic American fare as well as a delicious breakfast buffet.

ZEST KITCHEN & BAR

75 S. 200 West, SLC, 801-433-0589, zestslic.com. Zest Kitchen & Bar melds healthy food and fresh, hand-crafted cocktails as well as one of the largest selections of organic wines, beers and spirits in Utah. Offering a wide range of plant-based and gluten-free items and specializing in local and organic ingredients.

ALTA

ALTA LODGE RESTAURANT

10230 E. Little Cottonwood Canyon Rd., Alta, 801-742-3500, altalodge.com. Summer or winter, enjoy renowned cuisine in a romantic alpine setting.

ALTA PERUVIAN LODGE DINING ROOM

10000 E. Little Cottonwood Canyon Rd., Alta, 801-742-3000, altaperuvian.com. A beautiful setting in the Wasatch Mountains, the menu features fine dining, excellent food and a full bar.

SNOWPINE LODGE

10420 Little Cottonwood Rd., Suite #1, Alta, 801-742-2000, snowpine.com. World-class dining and cuisine is just steps away from the slopes of the mountain it shares with Alta Ski Area.

DRAPER

GARAGE GRILL

1122 E. Draper Parkway, Draper, 801-523-3339, thegaragegrill.com. Draper, Utah's only brewery and restaurant features a full menu, of entrees, salads, sandwiches, pizzas and sushi. The bar offers 20 of Salt Flats Beers on tap.

HOLLADAY

FRANCK'S

6263 S. Holladay Blvd, Holladay, 801-274-6264, frankcsfood.com. Founding chef Franck Peissel's influence can still be tasted with personal interpretations of continental classics. Some, like the meatloaf, are perennials, but mostly the menu changes according to season and the current chef's whim.

MIDVALE

BOHEMIAN BREWERY

94 E. Fort Union Blvd, Midvale, 801-566-5474, bohemianbrewery.com. Bohemian keeps a firm connection to its cultural history—so to go with the wonderful Czech beer, you can nosh on potato pancakes, pork chops and goulash. There's also plenty of standard pub fare.

**TSUNAMI
RESTAURANT &
SUSHI BAR -
UNION HEIGHTS**

7628 S. Union Park Avenue, Midvale, 801-676-6466, tsunamiutah.com. Besides sushi, the menu offers crispy-light tempura and numerous house cocktails and a large sake list.

SALT CITY VODKA

6786 S. Clemates Dr., Midvale, saltcityvodka.com. This handmade vodka is made for sipping, not just mixing. Check out the tasting room and small bites menu.

SANDY

LA CAILLE

9565 S. Wasatch Boulevard, Sandy, 801-942-1751, lacaille.com. Utah's original glamour girl has regained her luster. The grounds are as beautiful and a greenhouse, grapevines and gardens all supply the kitchen and the cellar.

CRISP & GREEN

9710 S. State Street, Sandy, 385-361-1823, crispandgreen.com.

Crisp & Green is a fast, casual, healthy restaurant offering made-from-scratch salads, grain bowls and smoothies.

SNOWBIRD

**THE AERIE
RESTAURANT
& LOUNGE**

Snowbird Ski & Summer Resort, Snowbird, 801-933-2160, snowbird.com. Floor-to-ceiling windows mean drinkers can marvel at nature's handiwork while feasting from the sushi bar. The menu is global with live music some nights.

THE ATRIUM

Snowbird Ski & Summer Resort, Snowbird, 801-933-2140, snowbird.com. The Cliff Lodge's slope-side restaurant serves gourmet coffees, pastries, breakfast and lunch, year-round.

THE FORKLIFT

9385 Snowbird Center Drive #094, Snowbird, 801-933-2222, snowbird.com. The Forklift features a casual, family dining atmosphere and serves a la carte breakfast and lunch entrées, year-round. Beer, wine and cocktails are served. During the winter, an après-ski menu is offered.

**THE LODGE BISTRO
& LOUNGE**

Snowbird Ski & Summer Resort, Snowbird, 801-933-2145, snowbird.com. The Lodge Bistro is an intimate restaurant serving elegant American cuisine with a French twist along with an impressive selection of wines.

THE STEAK PIT

Snowbird Ski & Summer Resort, Snowbird, 801-933-2260, snowbird.com. The Steak Pit serves only the best prime and Wagyu steaks and seafood items, cooked to perfection and served in a rustic steak house setting with great mountain views.

**WILDFLOWER
RISTORANTE
& LOUNGE**

Snowbird Ski & Summer Resort, Snowbird, 801-933-2230, snowbird.com. The sun-drenched flavors of Italy infuse the food and complement the mood at this casual-romantic restaurant.

SOLITUDE

HONEYCOMB GRILL

12076 Big Cottonwood Canyon, Solitude, 801-536-5787, solitudemountain.com. With views of the beautiful Wasatch Mountains, Honeycomb Grill is the perfect place to enjoy a delicious meal after a day on the mountain.

SOLITUDE YURT

12000 Big Cottonwood Canyon, Solitude, 801-536-5765, solitudemountain.com. The Yurt offers one of the most unique dining experiences in Utah. Guests snowshoe less than a mile through a moonlit forest to enjoy a meal in the Mongolian Yurt.

ST. BERNARD'S

12000 Big Cottonwood Canyon, Solitude, 801-535-4120, solitudemountain.com. St. Bernard's serves dinner Wednesday through Saturday evenings during the winter season and features a selection of European family classics.

STONE HAUS

12000 Big Cottonwood Canyon, Solitude, 801-536-5767, solitudemountain.com. The Stone Haus Pizzeria and Creamery offers guests a quick and convenient place to grab a fresh sandwich for lunch or piping hot pizza for dinner.

THE THIRSTY SQUIRREL

12000 Big Cottonwood Canyon, Solitude, 801-536-5797, solitudemountain.com.

The Thirsty Squirrel is a classic mountain pub offering a variety of cocktails, craft beers, wine and hot appetizers.

WEST JORDAN ARCHIBALD'S RESTAURANT AT GARDNER VILLAGE

1100 W. 7800 South, West Jordan, 801-566-6940, gardnervillage.com/archibalds-restaurant. Archibald's Restaurant is located in a historic flour mill that was built in 1877 by one of the original pioneer settlers to the Salt Lake Valley, Archibald Gardner.

WEST VALLEY ELEMENTS @ 35TH

3524 S. Market Street, West Valley City, 801-966-3470, elementsat35th.com. Whether you're looking for a great cut of steak, a modern approach to a classic dish, or burgers and flatbreads, you'll find it at Elements.

CATERING

CENTERPLATE

100 S. West Temple, SLC, 504-418-1872, centerplate.com. For events that impress, Centerplate offers world-class hospitality and remarkable menus for gatherings of any size.

CUISINE UNLIMITED CATERING & SPECIAL EVENTS

4641 Cherry Street, SLC, 801-268-2332, cuisineunlimited.com. Cuisine Unlimited is Utah's popular event catering and coordination service for corporate, weddings and social occasions in Salt Lake City and Park City.

CULINARY CRAFTS

357 W. 200 South, SLC, 801-355-6575, culinarycrafts.com. Always fresh, seasonal and as local as possible, Culinary Crafts serves Salt Lake and surrounding areas.

GOOD DAY CATERING

380 W. 1700 S, SLC, 801-532-7829, gooddaycatering.com.

Good Day Catering offers a variety of flexible catering and event planning solutions from cutting edge to traditional.

JOSEPH SMITH MEMORIAL BUILDING CATERING

15 E. South Temple, SLC, 801-539-3130, templesquarehospitality.com. 29,000 square feet of meeting space in eleven rooms housed in an elegant historical building, formerly the Hotel Utah.

LUX CATERING & EVENTS

1578 S. 300 West, SLC, 801-446-2537, uxcateringandevents.com. LUX catering is a family of designers, mavens, and

epicureans with a lifetime of combined expertise.

MELANGE LIQUID CATERING

358 S. 700 East #b141, SLC, 801-381-0268, melangeliquidcatering.com. Melange is French for Mixer and this catering company will "mix" your favorite beverage and create a great "mixer" for your guests.

UTAH FOOD SERVICES

100 S. West Temple, SLC, 801-531-0226, utahfoodservices.com. A locally owned and award winning catering business for over 30 years, Utah Food Services (UFS) excels by providing creative menus, innovative presentations and exceptional service.



Culinary Crafts

WARM HOSPITALITY AND
SIZZLING STEAKS.

NOW SERVING GENEROUS PORTIONS OF EACH.



THIS IS HOW IT'S DONE.

Salt Lake City • 801.363.2000 • 275 S West Temple St

Ruth had a certain way of doing things, like preparing the best prime steak of your life and serving it on a 500° sizzling plate. Come in tonight and experience Ruth's timeless recipe for yourself.

AUTHENTIC • ABUNDANT • AFFORDABLE



Rodizio Grill is about **abundance**. Enjoy **unlimited** Brazilian sides, gourmet salads and rotisserie-grilled meats & glazed pineapple carved tableside.

The best part? **Enjoy as much as you'd like!**

Daily Lunch & Dinner - Signature Cocktails - Homemade Desserts - Group Event Space - Gift Cards

Located at Trolley Square - Salt Lake City 600 South 700 East, 2nd Floor
801-220-0500 rodizio.com

FIRST ON THE AGENDA: DRIVE SUCCESSFUL MEETINGS.

Plan and host meetings, events and conventions with a portfolio of products built for your business. Register for Delta Meeting Products today to enjoy travel discounts, dedicated specialists and Multi-Meeting Agreements.

Get started at [DELTA.COM/MEETINGS](https://delta.com/meetings).



 **DELTA**
BUSINESS



MERCEDES GLEITZE



LARA GUT-BEHRAMI



IGA ŚWIĄTEK



SONYA YONCHEVA



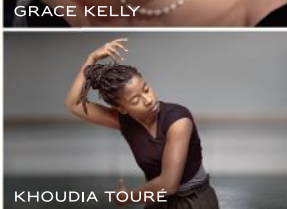
GRACE KELLY



SYLVIA EARLE



LEXI THOMPSON



KHOUDIA TOURE



YUJA WANG

© ROLEX SA, 2021. ALL RIGHTS RESERVED.

“CLASSIC”?

“A classic timepiece, designed for a lady.” This is how some may describe our Oyster Perpetual Lady-Datejust. Maybe they’re right. Since the early 20th Century, Rolex has designed and crafted watches suited for all women’s wrists, with the same standard of excellence as for all the models that have built its legend. Always pursuing a higher standard. So, if “classic” means perpetuating tradition while combining elegance and precision, grace and resistance, beauty and performance, it is indeed a classic timepiece, designed for a lady. **The Lady-Datejust.**

#Perpetual

OFFICIAL ROLEX JEWELER

TANNER

UTAH'S JEWELER SINCE 1927

SALT LAKE CITY | PARK CITY
OCTANNERJEWELERS.COM



OYSTER PERPETUAL LADY-DATEJUST



ROLEX

ROLEX  OYSTER PERPETUAL AND DATEJUST ARE © TRADEMARKS.